

CSP-3417 CONTAINER YARD 1
SOUTH-PHASE 1 AT BAYPORT
CONTAINER TERMINAL (REBID)

CSP-3419 CONTAINER YARD 8 AT
BAYPORT CONTAINER TERMINAL
(REBID)

Pre-Proposal Meeting
October 10, 2024
10:00 a.m.

PORT HOUSTON



PORT HOUSTON

AGENDA

1. Pre-Proposal Meeting House Rules
2. Introductions
3. Business Equity
4. Procurement Services
5. Selection Criteria
6. Project Scope
7. Questions



PRE-PROPOSAL MEETING HOUSE RULES

- Attendees will begin the meeting in listen-only mode.
- There will be a Q&A session at the end of today's presentation.
- If you have any questions during the presentation, you may submit your Questions through the Teams Chat feature and they will be addressed at the end of the presentation.
- This presentation recording will be posted on the BuySpeed homepage under "Pre-Bid/Proposal Conference Information."



PHA PERSONNEL

- Roger Hoh– Director, Project and Construction Management
- Josh Keller – Project Manager (CY1S)
- Corrie Yaw– Project Manager (CY8)
- Yvette Camel-Smith – Director, Procurement
- Tanika Chukwumerije– Manager Contracts, Procurement (CY1S)
- Dean Ainuddin– Manager Contracts, Procurement (CY8)
- Alexis King– Contract Administrator, Procurement (CY1)
- Nicole Jones– Contract Administrator, Procurement (CY8)
- Brenda Ruiz – Business Equity Supplier Diversity Manager
- Eduardo Mejia – Compliance Analyst, Business Equity



PORT COMMISSION



Ric Campo
Chairman of the Port Commission



Dean E. Corgey
Commissioner



Clyde Fitzgerald
Commissioner



Stephen H. DonCarlos
Commissioner



Wendy Montoya Cloonan
Commissioner



Alan Robb
Commissioner



Thomas Jones, Jr.
Commissioner



PORT HOUSTON

Harris County Wage Rate Compliance & Requirements:

- Attendance at pre-bid/proposal meetings and preliminary meetings
- Review and approve weekly certified payroll records
- Monitor wage rate compliance
- Review claims of non-compliance from the field and recommend appropriate responses as required or permitted under the Wage Scale Act



BUSINESS EQUITY



PORT HOUSTON

BUSINESS EQUITY S/MWBE INITIATIVE

- Business Equity Division provides resources to small, minority- and woman-owned businesses (S/MWBE) seeking to participate in Port Houston procurements and contracts.
- Port Houston promotes business opportunities for all sectors of the community and recognizes the importance of vendor and supplier diversity in its contracts.
- Port Houston has established an organizational 35% Small Business participation goal and a 30% Minority- and Woman Business Enterprise (MWBE) aspirational goal.

35%

SBE participation
goal

30%

MWBE aspirational
goal



PORT HOUSTON

BUSINESS ENTERPRISE DEFINITIONS

Small Business Enterprise (SBE)

- Gross revenues or number of employees, averaged over the past three years does not exceed the size standards defined by SBA.
- The net worth of the owner must be less than \$2.047 million, excluding the owner's primary residence and assets of the business.

Minority Business Enterprise (MBE)

- At least 51% Owned by one or more Minority Individuals, or at least 51% of the equity is Owned by one or more Minority Individuals.
- Both the management and daily business operations are carried out and controlled by one or more of the Minority Individuals who own it.

Woman-Owned Business Enterprise (WBE)

- At least 51% Owned by one or more Women, or at least 51% of the equity is Owned by one or more Women
- Both the management and daily business operations are carried out and controlled by one or more of the Women who own it.



CERTIFYING PARTNERS

- City of Houston *
- Houston Minority Supplier Development Council
- METRO *
- National Minority Supplier Development Council & Affiliates
- Small Business Administration 8(a) *
- South Central Texas Regional Certification Agency – SCTRCA *
- Texas Comptroller of Public Accounts – HUB Certification
- Texas Department of Transportation – TxDOT *
- Women’s Business Enterprise Alliance
- Women’s Business Enterprise National Council & Affiliates – WBENC

* No fee to apply



PORT HOUSTON S/MWBE ENROLLMENT DIRECTORY

How do I identify Port Houston enrolled small, minority- and woman-owned businesses (S/MWBE)?

Search for businesses in 2 easy steps:

1. Visit <https://porthouston.smwbe.com> Under the section on the left labeled Small, Minority and Woman Owned Business Directory and Online Application select the blue button labeled, **"Find a S/MWBE Firm"**.

2. You will need to complete at least one of the fields in the popup window titled, Port Houston S/MWBE Enrollment Directory and Search.



www.porthouston.smwbe.com



TIPS TO INCREASE S/MWBE PARTICIPATION

- Establish relationships with S/MWBEs in advance
- Use the Port of Houston Directory.
- Advertise opportunities
- Offer assistance and use the services and assistance, as appropriate, of such organizations as the Small Business Administration and the Minority Business Development Agency of the Department of Commerce.
- What subcontractor's have you done business in the past and do they qualify?



BUSINESS EQUITY CONTRACT REQUIREMENTS

CSP – 3417 Container Yard 1 South - PHASE 1 at Bayport

- 15% Small Business Enterprise (SBE) participation, 10 points relative weight

CSP – 3419 Container Yard 8 at Bayport

- 24% Small Business Enterprise (SBE) participation, 10 points relative weight



PROCUREMENT



PORT HOUSTON

PROCUREMENT

- No Contact Period – No communication between interested vendors and Port Houston staff during the active period
 - Technical questions should be submitted via BuySpeed
 - Last day to submit questions: 7 days before due date (10/23/2024)
- Responses are due no later than 11 a.m. on 10/30/2024
- Proposals must be submitted electronically via email to: **procurementproposals@porthouston.com**
- Bid bond-5% Total Amount Bid
- Each project is a Non-divisible Procurement
- Use forms in the package
- Anticipated award date: 12/10/2024



EVALUATION CRITERIA

Port Houston will select the provider of the services offering the best value to Port Houston. The criteria and relative weights that will be considered by Port Houston in evaluating each Response are as follows:

Evaluation Criteria	Relative Weight (%)
Price	50
Reputation, Quality, and Safety	20
Benefit to Port Authority	15
Overall Compliance with Port Authority Policies	5
Small Business Participation	10



SCOPE OF WORK OVERVIEW



PORT HOUSTON

Project Scope - Container Yard 1 South

Location Overview

- **Overall Scope of CY1S-PH1**
- **Existing Site Conditions**
- **Construction Considerations**
- **Select Distinct Features**



Project Scope - Container Yard 1 South

- Project Includes 4.6-Ac Container Yard 1-South:
 - Demolition/Clearing of project area
 - Site Grading
 - Stormwater Infrastructure
 - Water System
 - Pavement - RCC & JRCP
 - Striping, Security Fence and Barrier, Turnstiles
 - Electrical (Ductbank, Panels, Etc.)
 - Telecommunication (Ductbanks, Camera Poles, Etc.)
 - **Construction Duration 180 days from NTP**



Project Scope - Container Yard 1 South

Existing Site Conditions

- East End of PHA Bayport Terminal, access from Port Rd to Cruise Rd
- CY8 construction concurrent with CY1S-Ph1

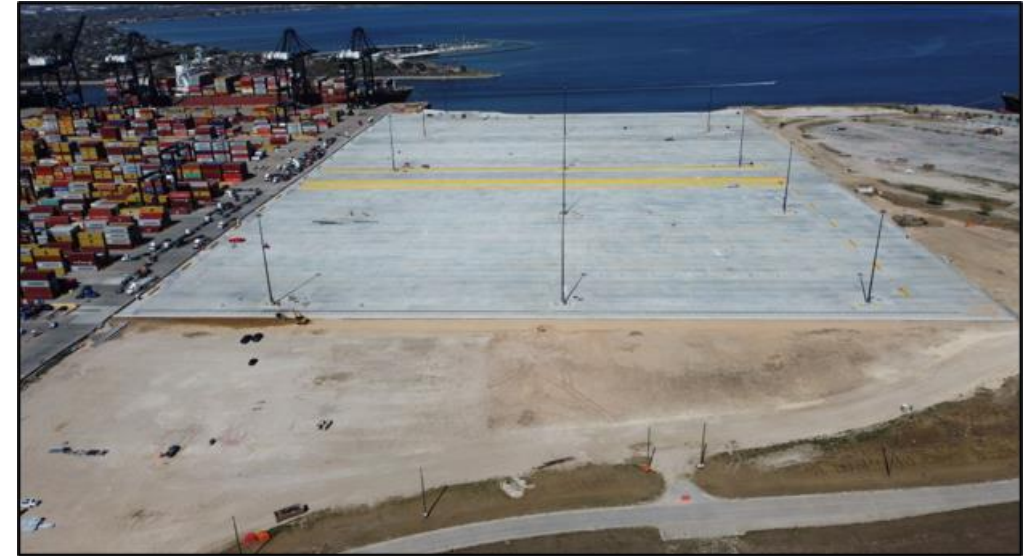


Project Scope - Container Yard 1 South

Existing Site Conditions

- Demolition
 - Proposed container yard area generally clear
 - Remove existing drainage inlet south of CY1M
 - Remove existing overhead electrical along Cruise Road

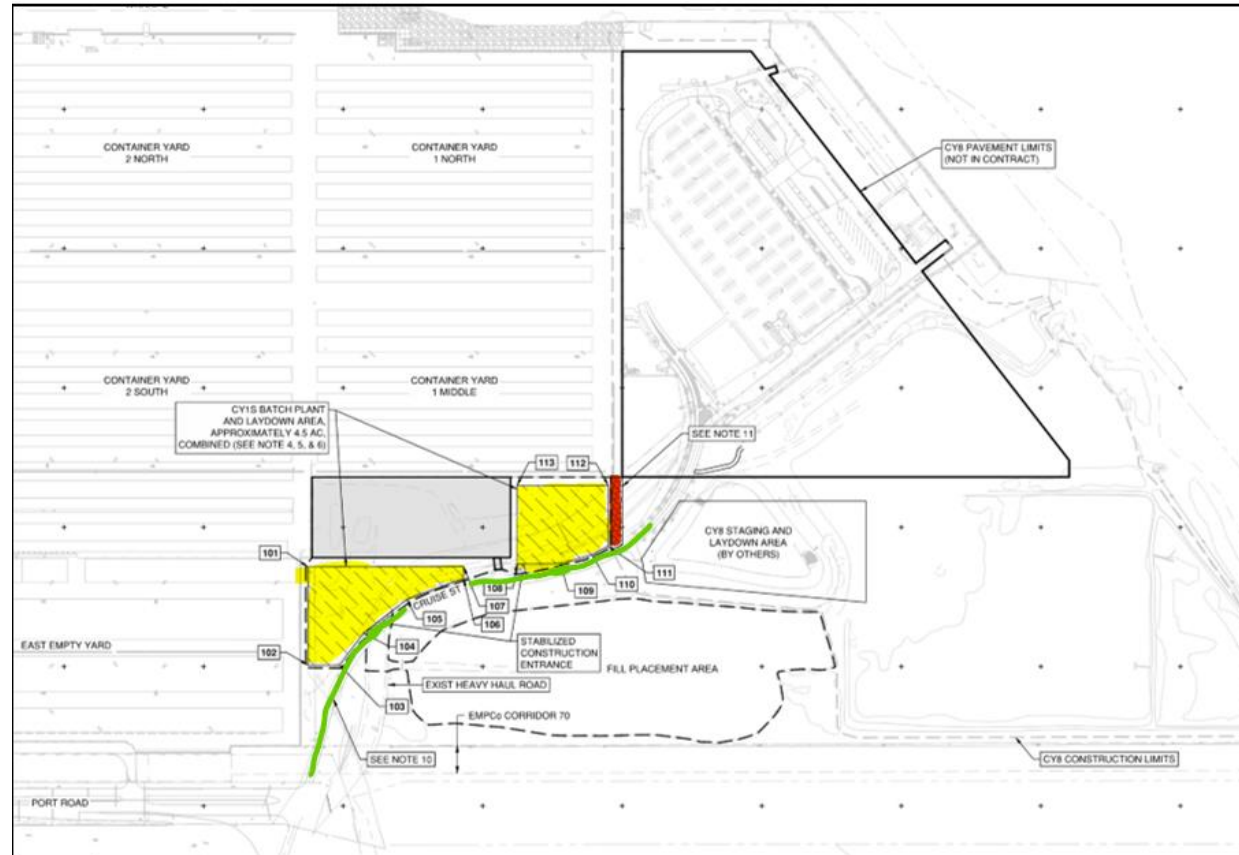
- Connections to Existing Elements
 - Pavement (to CY1M and East Empty Yard)
 - Water
 - Storm to Existing 6x5 RCB from CY1M
 - CY1M Elec/Comm Ductbanks
 - Security barrier and fence
 - Field verify existing features



Project Scope - Container Yard 1 South

Existing Site Conditions

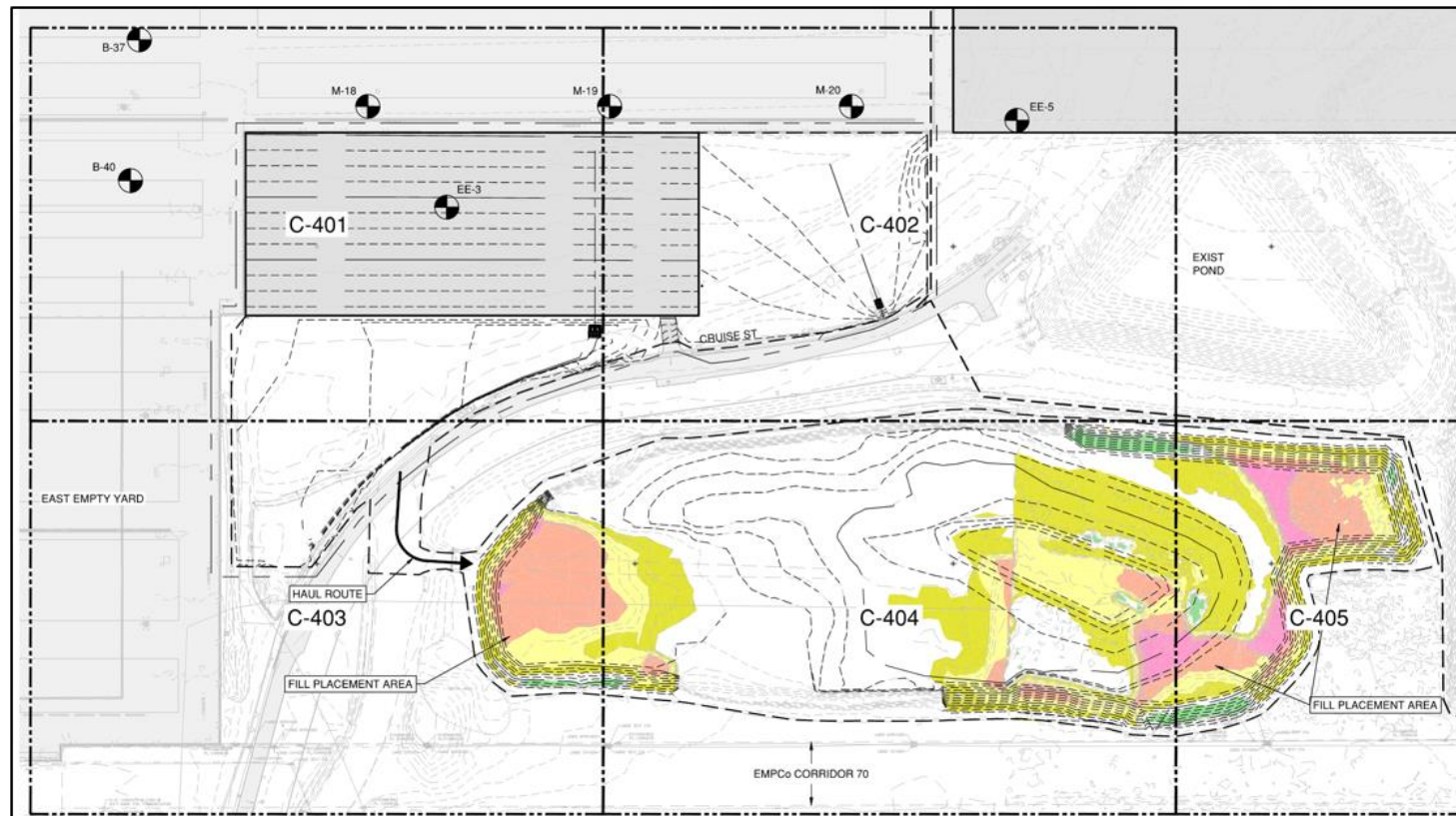
- Laydown & Batch Plant Area
 - Staging/Storage and Batch Plant Area, limited space
 - Maintain access for CY8, P11, Wharf 1, Lay-berth wharf
 - Water available in prescribed amount per Special Conditions
 - No electrical service available to contractor



Project Scope - Container Yard 1 South

Construction Considerations

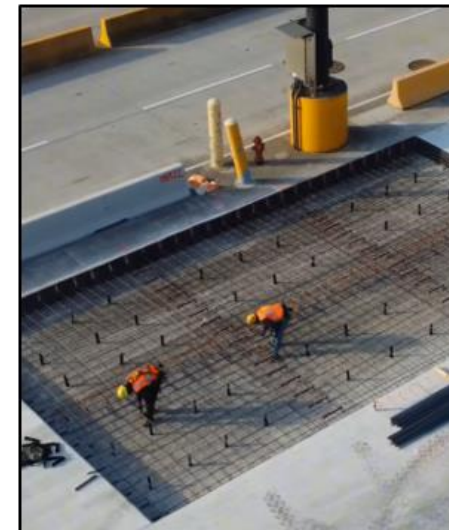
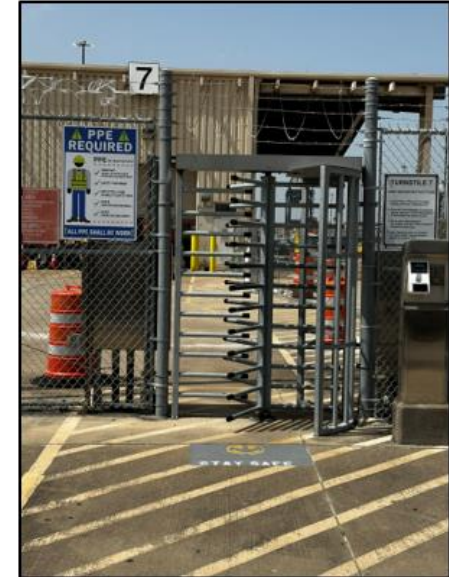
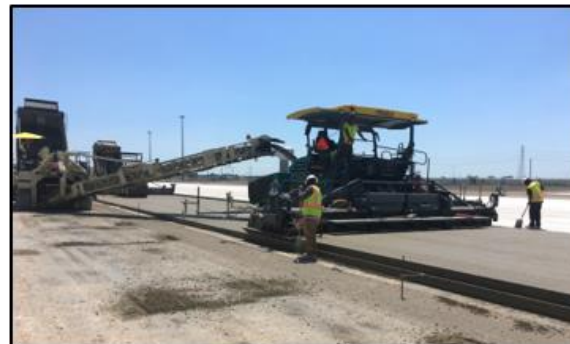
- **Site Grading:**
- Roughly 46,000 cyd cut for container yard excavation and final grading
- Excess material to be placed on current stockpile south of Cruise Road



Project Scope - Container Yard 1 South

Select Distinct Features

- Drainage System:
 - Connection to Existing 6x5 RCB
 - RCB Trunk-line & Pre-Cast Junction Boxes
 - Ditches
- Water Lines:
 - Water distribution
- Pavement:
 - Lime-Cement Stabilization
 - Drainage Layer
 - Cement Treated Base Layer
 - RCC Pavement
 - Two 9" lifts
 - JRCF Pavement
- Site Features:
 - Security Fence & Barriers
 - Turnstiles
- Electrical and Telecommunication:
 - Electrical Ductbank & Manholes
 - Connect to Existing Ductbanks/Cables
 - Electrical Panel at Turnstile
 - Infrastructure for PHA Future Cameras
 - Camera poles (cameras installation not in contract)



PORT HOUSTON

Project Scope - Container Yard 8

Overview

- **Overall Scope of CY8**
- **Existing Site Conditions**
- **Construction Considerations**
- **Select Distinct Features**



Project Scope-CY8

Scope Overview

- Project Includes 37.2-Ac Container Yard 8:
 - Demolition of Existing Utilities, Site Infrastructure
 - Site Grading
 - Stormwater Infrastructure
 - Utilities (Water & Sanitary)
 - Pavement - RCC & JRCP
 - Striping, Security Fence and Barrier
 - Electrical (High Mast Poles, Ductbank, Panels, Switchyard, Etc.)
 - Telecommunication (Ductbanks, Elevated IDF, Camera Poles, Etc.)
- Part A & Part B:
 - Part A ([Grant, subject to BA-BA](#)), construction of Container Yard 8 and all final grading for entire work limits
 - Part B ([Non-Grant](#)), excavation and removal of previously placed dredge material



Project Scope - Container Yard 8

Existing Site Conditions

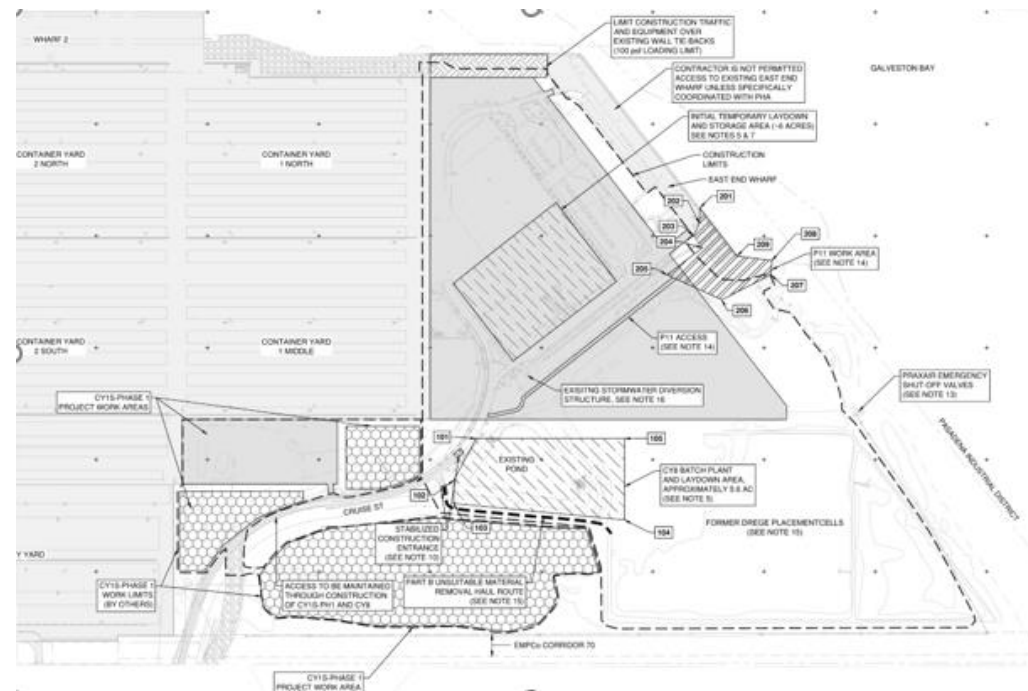
- East End of PHA Bayport Terminal, access from Port Rd to Cruise Rd
- Cruise Terminal Building has been removed
- Earth stockpile in southeast footprint of proposed CY8
- Formerly placed dredge material removal from areas south of CY8



Project Scope - Container Yard 8

Existing Site Conditions

- Laydown & Batch Plant Area
 - Initial staging area
 - Establish long-term laydown and batch plant, fill existing pond with material from stockpile in SE corner of CY8
 - Water available for contractor per Special Conditions, Electrical service not provided by PHA
 - Coordination with other site activities: CY1S-Ph1, P11, Wharf 1, Lay-berth wharf access



Project Scope - Container Yard 8

Existing Site Conditions

- Demolition
 - Former Cruise Terminal building removed. Floor slab and foundations remain, to be removed as indicated on the plans
 - Existing Utilities (water, storm, sanitary, elec, gas, etc.) to be removed unless otherwise indicated
 - Existing surface features (pavements, gravel, trees, etc.) to be removed

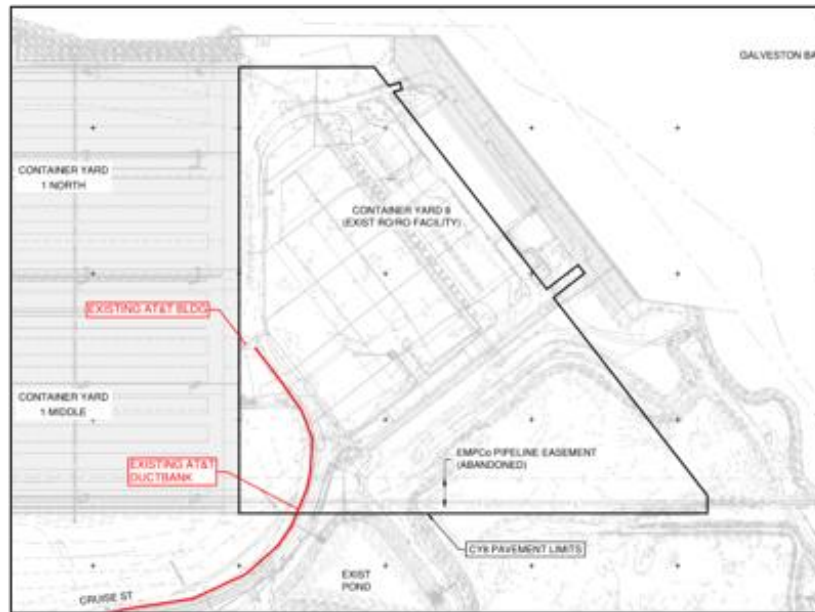
- Connections to Existing Elements
 - Pavement (to CY1 and existing wharf pavement)
 - Water to CY1 and Wharf
 - Storm to Existing 8x6 RCB
 - Sanitary to Existing 4" FM & Future to Wharf 1
 - CY1 Elec/Comm Ductbanks
 - Security barrier and fence
 - Field verify existing features



Project Scope - Container Yard 8

Existing Site Conditions

- Existing AT&T Building & Ductbank
 - AT&T building and ductbanks to remain until official notice to remove given by PHA, plan direction is to keep in service until June 2025. Ultimately to be removed by the Contractor
 - Existing overhead electrical (north side of Cruise Road) will be removed with CY1S-Ph1 project, timing to be coordinated with CY1S-Ph1 contractor and PHA



Project Scope - Container Yard 8

Site Grading

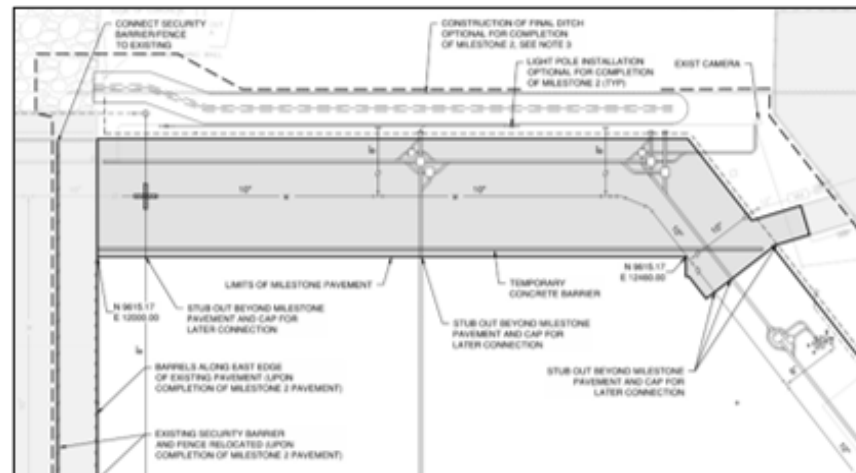
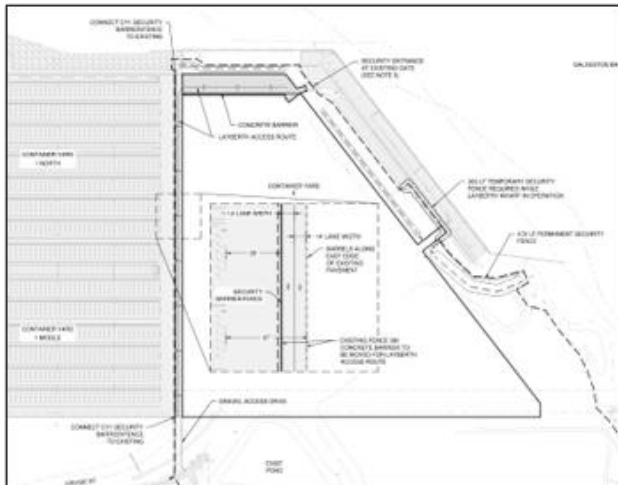
- Excavation and Fill
 - Unsuitable soft-wet soils from dredge placement cells and pond de-mucking to be removed from the site (est ~412,000 cyd), Part B work.
 - Material from CY8 excavation to remain on site, used as fill and stockpiled where former dredge material is removed (est ~ 315,000 cyd).
 - Pre-project survey to be used to determine project quantities, interim surveys needed to quantify removal of former dredge material.



Project Scope - Container Yard 8

Milestones

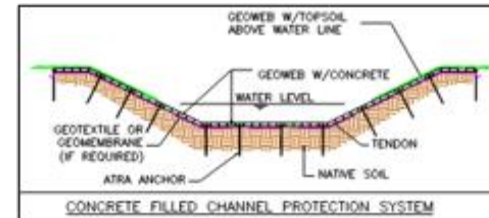
- **Overall Contract:** Duration 630 days from NTP (LDs @ \$5,000/d) NTP +60 days to mobilize.
- **Milestone 1: Submittals (at least 14 days before construction start)**
 - General Condition & Division 01 Submittals (Safety Plan Criteria)
 - Considerations for Long Lead Item Submittals
- **Milestone 2: Access for Lay-Berth Wharf (NTP +270 days, LDs @ \$2,000/d):**
 - Grading & Drainage
 - Utility installations and connections (water & sanitary)
 - Electrical and Communication, permanent for existing east end security camera and lights at wharf
 - Paving (RCC & JRCP)
 - Relocation of CY1 security barrier & fence & reconfiguration of security fence at the existing wharf



Project Scope - Container Yard 8

Select Distinct Features

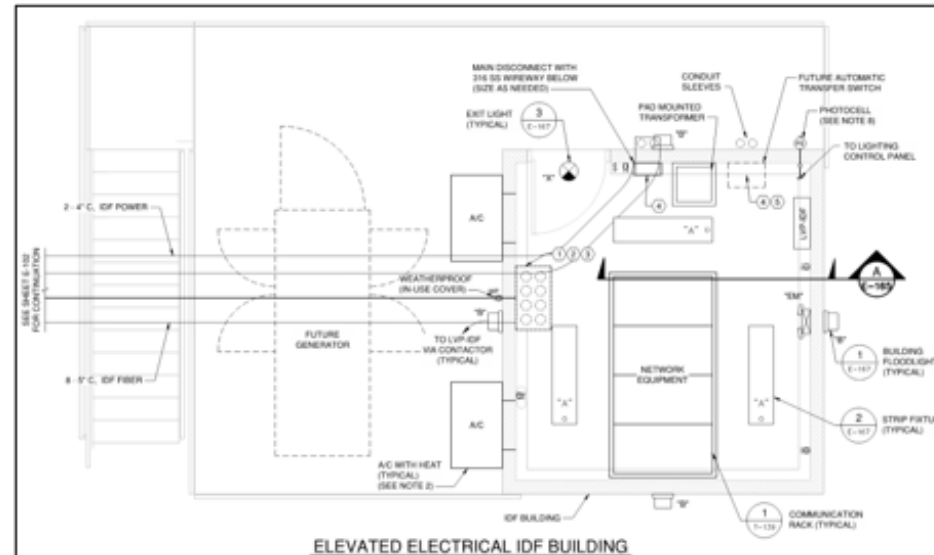
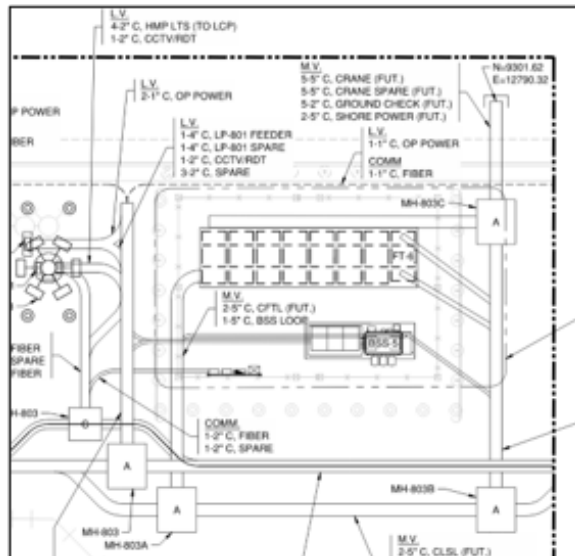
- Drainage System:
 - Connection to Existing 8x6 RCB
 - Precast Trench Drains
 - RCB & RCP Trunk-line
 - Pre-Cast Junction Boxes
 - Ditches, ditch lining with cellular confinement system
- Utilities (Water & Sewer):
 - Water distribution, water meter & BFP
 - Sanitary collection, pump station
- Pavement:
 - Lime-Cement Stabilization
 - Drainage Layer
 - Cement Treated Base Layer
 - RCC Pavement
 - Two 9" lifts
 - Submit RCC Joint Layout Plan for Approval
 - JRCP Pavement
 - JRCP Block-outs
 - JRCP Transition Pavement
- Structural:
 - Drilled Shafts (RTG Tie-Downs, HMLPs, Platform Foundations)
 - Elevated Platform



Project Scope - Container Yard 8

Select Distinct Features

- Electrical and Telecommunication:
 - Electrical Ductbank & Manholes
 - Connect to Existing Ductbanks/Cables
 - High Mast Light Poles & Roadway Lighting
 - Infrastructure for PHA Future Cameras
 - Crane Loop Switchyard
 - Elevated IDF Building
 - Camera poles (cameras installation not in contract)



QUESTIONS?

Procurement Services

Email: procurement@porthouston.com

Phone: (713) 670- 2464

New BuySpeed URL:

<https://buyspeed.porthouston.com>



PORT HOUSTON