

CSP-3408 REPAIR OF WHARVES 20 AND 21 BULKHEAD AT TURNING BASIN TERMINAL

Pre-Proposal Meeting
October 15, 2024
9:30 a.m.

PORT HOUSTON



PORT HOUSTON

AGENDA

1. Pre-Proposal Meeting House Rules
2. Introductions
3. Business Equity
4. Procurement Services
5. Selection Criteria
6. Project Scope
7. Questions



PRE-PROPOSAL MEETING HOUSE RULES

- Attendees will begin the meeting in listen-only mode.
- There will be a Q&A session at the end of today's presentation.
- If you have any questions during the presentation, you may submit your Questions through the Teams Chat feature and they will be addressed at the end of the presentation.
- This presentation recording will be posted on the BuySpeed homepage under "Pre-Bid/Proposal Conference Information."



PHA PERSONNEL

- Roger Hoh– Director, Project and Construction Management
- Corrie Yaw – Project Manager
- Yvette Camel-Smith – Director, Procurement
- Tanika Chukwumerije – Manager Contracts, Procurement
- Alexis King– Contract Administrator, Procurement
- Dr. Sabeeta Bidasie-Singh - Directory, Business Equity
- Brenda Ruiz – Business Equity Supplier Diversity Manager
- Eduardo Mejia – Compliance Analyst, Business Equity



PORT COMMISSION



Ric Campo
Chairman of the Port Commission



Dean E. Corgey
Commissioner



Clyde Fitzgerald
Commissioner



Stephen H. DonCarlos
Commissioner



Wendy Montoya Cloonan
Commissioner



Alan Robb
Commissioner



Thomas Jones, Jr.
Commissioner



PORT HOUSTON

Harris County Wage Rate Compliance & Requirements:

- Attendance at pre-bid/proposal meetings and preliminary meetings
- Review and approve weekly certified payroll records
- Monitor wage rate compliance
- Review claims of non-compliance from the field and recommend appropriate responses as required or permitted under the Wage Scale Act



BUSINESS EQUITY



PORT HOUSTON

BUSINESS EQUITY S/MWBE INITIATIVE

- Business Equity Division provides resources to small, minority- and woman-owned businesses (S/MWBE) seeking to participate in Port Houston procurements and contracts.
- Port Houston promotes business opportunities for all sectors of the community and recognizes the importance of vendor and supplier diversity in its contracts.
- Port Houston has established an organizational 35% Small Business participation goal and a 30% Minority- and Woman Business Enterprise (MWBE) aspirational goal.

35%

SBE participation
goal

30%

MWBE aspirational
goal



PORT HOUSTON

BUSINESS ENTERPRISE DEFINITIONS

Small Business Enterprise (SBE)

- Gross revenues or number of employees, averaged over the past three years does not exceed the size standards defined by SBA.
- The net worth of the owner must be less than \$2.047 million, excluding the owner's primary residence and assets of the business.

Minority Business Enterprise (MBE)

- At least 51% Owned by one or more Minority Individuals, or at least 51% of the equity is Owned by one or more Minority Individuals.
- Both the management and daily business operations are carried out and controlled by one or more of the Minority Individuals who own it.

Woman-Owned Business Enterprise (WBE)

- At least 51% Owned by one or more Women, or at least 51% of the equity is Owned by one or more Women
- Both the management and daily business operations are carried out and controlled by one or more of the Women who own it.



CERTIFYING PARTNERS

- City of Houston *
- Houston Minority Supplier Development Council
- METRO *
- National Minority Supplier Development Council & Affiliates
- Small Business Administration 8(a) *
- South Central Texas Regional Certification Agency – SCTRCA *
- Texas Comptroller of Public Accounts – HUB Certification
- Texas Department of Transportation – TxDOT *
- Women’s Business Enterprise Alliance
- Women’s Business Enterprise National Council & Affiliates – WBENC

* No fee to apply



PORT HOUSTON S/MWBE ENROLLMENT DIRECTORY

How do I identify Port Houston enrolled small, minority- and woman-owned businesses (S/MWBE)?

Search for businesses in 2 easy steps:

1. Visit <https://porthouston.smwbe.com> Under the section on the left labeled Small, Minority and Woman Owned Business Directory and Online Application select the blue button labeled, **"Find a S/MWBE Firm"**.

2. You will need to complete at least one of the fields in the popup window titled, Port Houston S/MWBE Enrollment Directory and Search.



www.porthouston.smwbe.com



TIPS TO INCREASE S/MWBE PARTICIPATION

- Establish relationships with S/MWBEs in advance
- Use the Port of Houston Directory.
- Advertise opportunities
- Offer assistance and use the services and assistance, as appropriate, of such organizations as the Small Business Administration and the Minority Business Development Agency of the Department of Commerce.
- What subcontractor's have you done business in the past and do they qualify?



BUSINESS EQUITY CONTRACT REQUIREMENTS

- 20% Small Business Enterprise (SBE) participation, 10 points relative weight



PROCUREMENT



PORT HOUSTON

PROCUREMENT

- No Contact Period – No communication between interested vendors and Port Houston staff during the active period
 - Technical questions should be submitted via BuySpeed
 - Last day to submit questions: 7 days before due date (10/23/2024)
- Responses are due no later than 11 a.m. on 10/30/2024
- Proposals must be submitted electronically via email to: **procurementproposals@porthouston.com**
- Bid bond-5% Total Amount Bid
- Nondivisible Procurement
- Use forms in the package
- Anticipated award date: 12/10/2024



EVALUATION CRITERIA

Port Houston will select the provider of the services offering the best value to Port Houston. The criteria and relative weights that will be considered by Port Houston in evaluating each Response are as follows:

Evaluation Criteria	Relative Weight (%)
Price	40
Reputation, Quality, Safety, and Environmental Record	25
Benefit to Port Authority	20
Overall Compliance with Port Authority Policies	5
Small Business Participation	10



SCOPE OF WORK OVERVIEW



PORT HOUSTON

Project Scope

Corrie Yaw, PE | Project Manager | Port of Houston Authority

Temi Kusemiju, PE | Engineer of Record | Lloyd Engineering

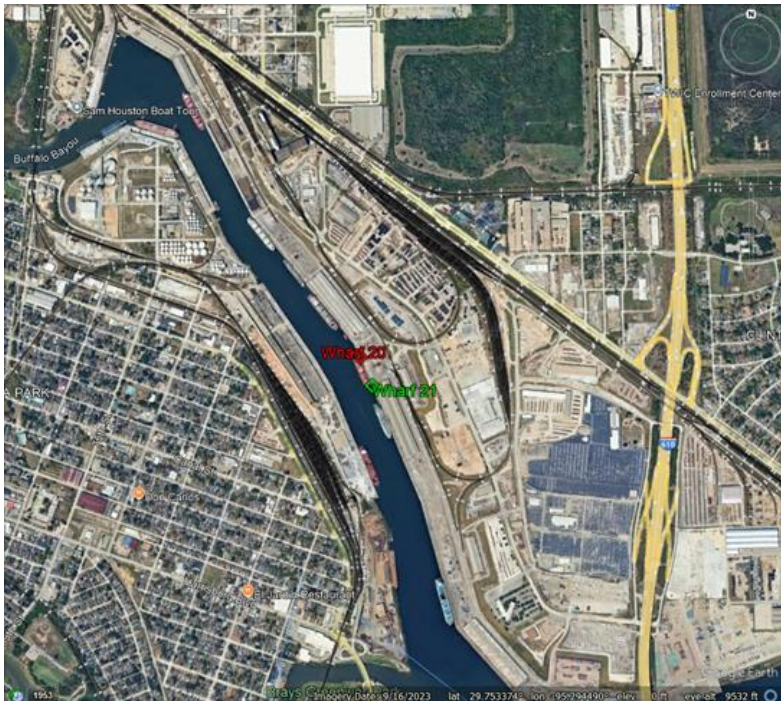


PORT HOUSTON

Project Scope

Project Location

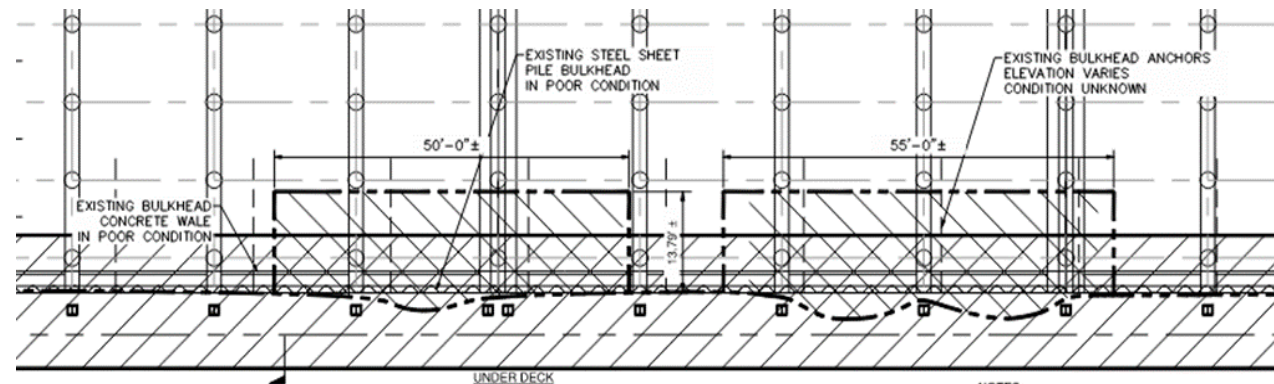
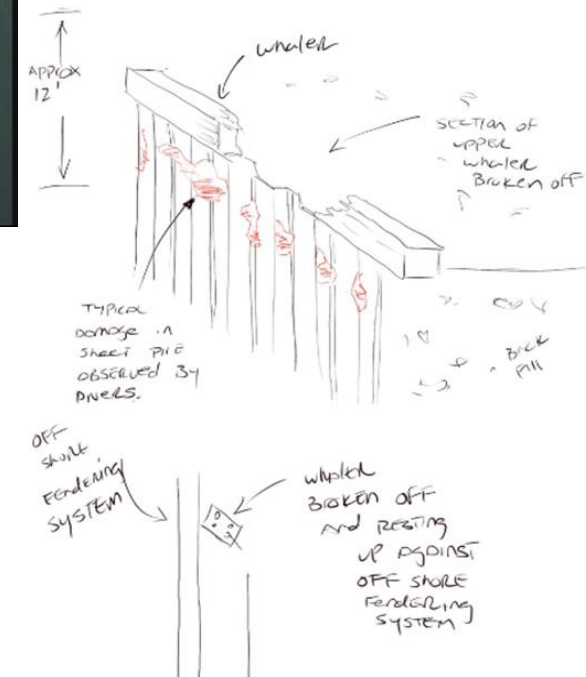
- Northside Turning Basin
- Coordinates
 - Lat 29.738918° N
 - Long 95.278608°W



Project Scope

Current Condition

- Current Condition
 - Overall, in **Fair** to **Critical** condition
 - Bulkhead Major Defects
 - Critical deflection of sheet pile at Wharf 20 and moderate deflection at Wharf 21
 - Deflected sheet pile leaning against fender H-piles
 - Holes (up to 5-ft wide) observed
 - Steel Framed Fender Panels
 - Isolated to widespread areas of corrosion
 - Deteriorating timber facing
 - Worn/damaged rubber fenders

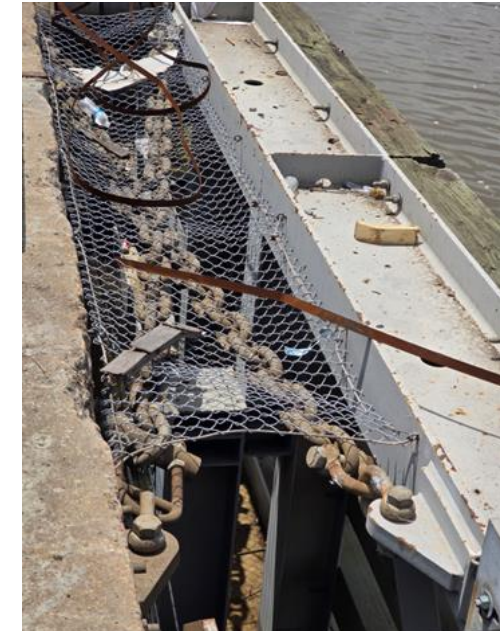


PORT HOUSTON

Project Scope

Current Condition

- Removals and rehabilitation of existing steel framed fender panels
 - 5-panels in total - (1) 100', (3) 160', (1) 130'
 - Isolated repairs on steel members
 - Surface preparation and recoating
 - Replacement of timber facing and (1) 130' panel
- Replacement of 35-qty rubber fender elements
- Partial demolition of existing steel bulkhead (underdeck)
 - Removal of backfill
 - Demolition of affected concrete waler beams and cutting of sheets
- Installation of new steel bulkhead (underdeck), 580-LF at wharf 20 and 95-LF at wharf 21
 - King pile sleeves on existing piles
 - Special sheet fabrications
 - Grouted closures at ends



Project Scope

Current Condition

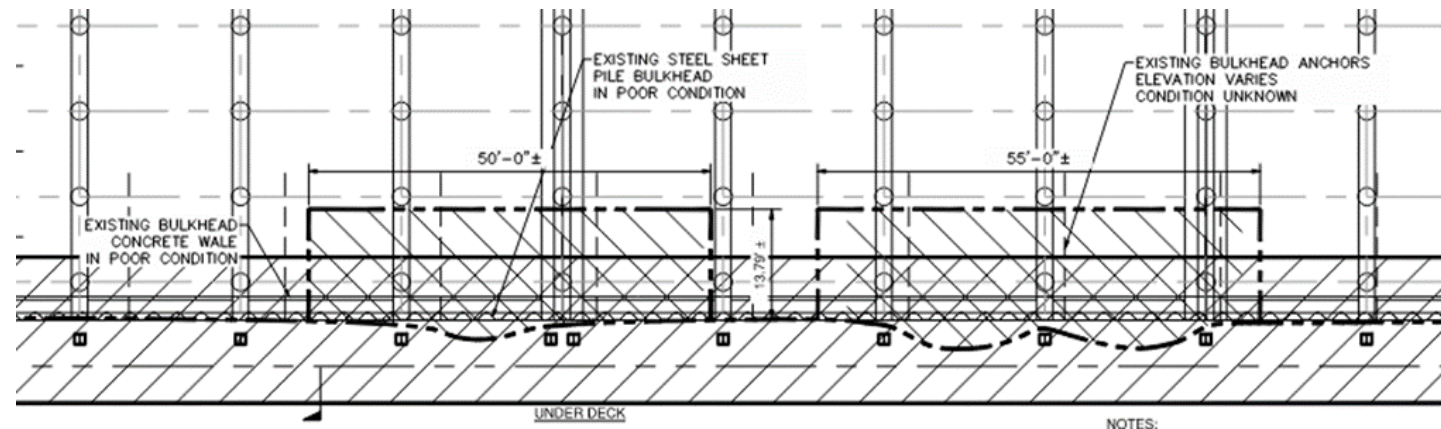
- Removals and rehabilitation of existing steel framed fender panels
 - 5-panels in total - (1) 100', (3) 160', (1) 130'
 - Isolated repairs on steel members
 - Surface preparation and recoating
 - Replacement of timber facing and (1) 130' panel
- Replacement of 35-qty rubber fender elements
- Partial demolition of existing steel bulkhead (underdeck)
 - Removal of backfill
 - Demolition of affected concrete waler beams and cutting of sheets
- Installation of new steel bulkhead (underdeck), 580-LF at wharf 20 and 95-LF at wharf 21
 - King pile sleeves on existing piles
 - Special sheet fabrications
 - Grouted closures at ends



Project Scope

Current Condition

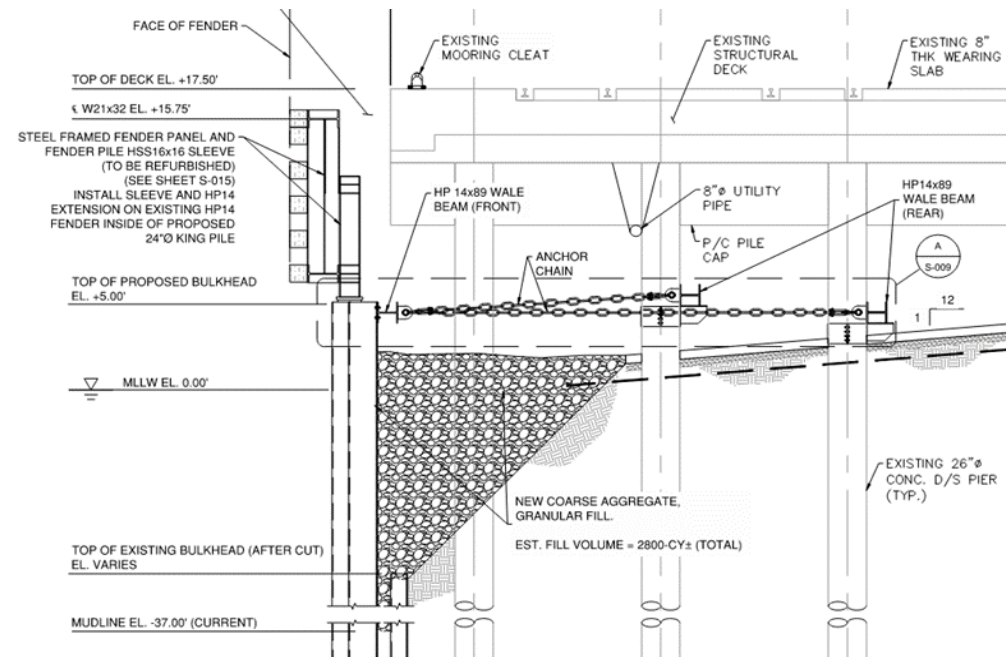
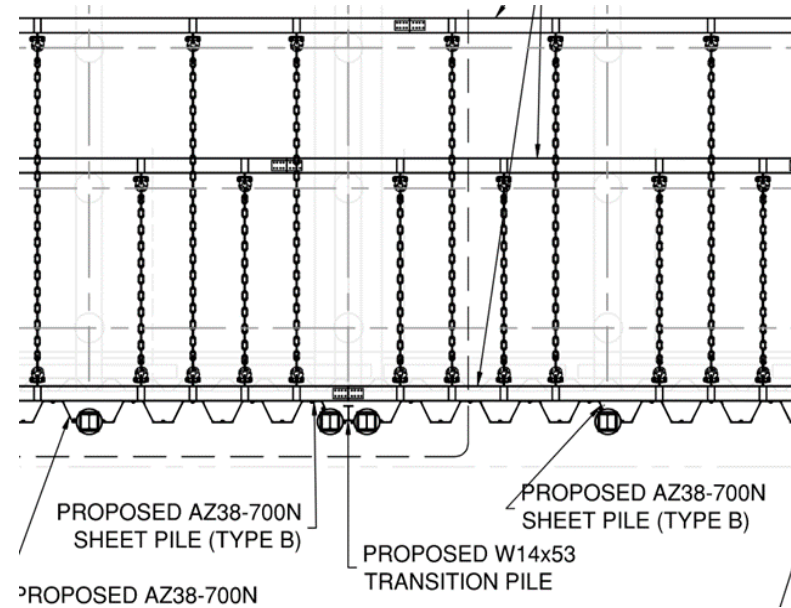
- Removals and rehabilitation of existing steel framed fender panels
 - 5-panels in total - (1) 100', (3) 160', (1) 130'
 - Isolated repairs on steel members
 - Surface preparation and recoating
 - Replacement of timber facing and (1) 130' panel
- Replacement of 35-qty rubber fender elements
- Partial demolition of existing steel bulkhead (underdeck)
 - Removal of backfill
 - Demolition of affected concrete waler beams and cutting of sheets
- Installation of new steel bulkhead (underdeck), 580-LF at wharf 20 and 95-LF at wharf 21
 - King pile sleeves on existing piles
 - Special sheet fabrications
 - Grouted closures at ends



Project Scope

Current Condition

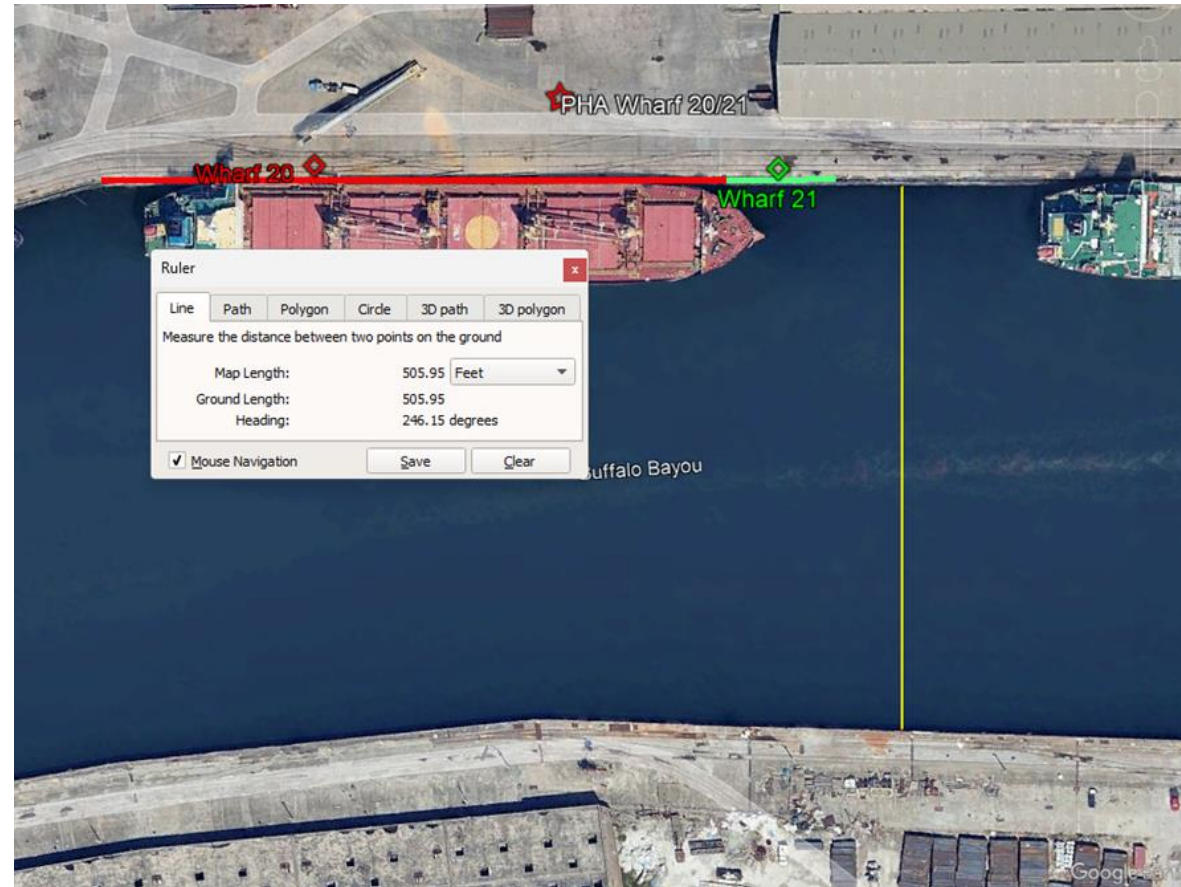
- Removals and rehabilitation of existing steel framed fender panels
 - 5-panels in total - (1) 100', (3) 160', (1) 130'
 - Isolated repairs on steel members
 - Surface preparation and recoating
 - Replacement of timber facing and (1) 130' panel
- Replacement of 35-qty rubber fender elements
- Partial demolition of existing steel bulkhead (underdeck)
 - Removal of backfill
 - Demolition of affected concrete waler beams and cutting of sheets
- Installation of new steel bulkhead (underdeck), 580-LF at wharf 20 and 95-LF at wharf 21
 - King pile sleeves on existing piles
 - Special sheet fabrications
 - Grouted closures at ends



Project Scope

Project Constraints

- Proximity to Ship Channel
 - High Vessel Traffic Area
 - Affects
 - Work Barge Orientation
- Underdeck Work
 - Most of work occurs under deck
 - Work is near or at waterline
 - Affects
 - Underdeck mobility for materials and equipment
 - Would require some dive work or floating work areas



Project Scope

Potential Challenges

- Current condition of existing bulkhead
 - Portions of bulkhead leaning against fender H-piles
 - DO NOT demolish if existing condition appears stable (intact anchors)
 - Build-up of sediment at Wharf 21
- Significant amount of underdeck work
 - Access challenges
 - Isolated locations of underdeck utilities
- Construction Sequence
 - Ensure existing failed bulkhead and fender H-pile is secured prior to installation of new sheets
 - Survey of proposed pile locations
 - Special fabrication sheetpiles



Project Site Visit

- Today (10/15) at 2:30pm
- Meet in front of the Turning Basin Executive Building
 - 111 East Loop N, Houston TX, 77029
 - Valid Drivers License needed for all personnel to get through security checkpoint
- **TWIC REQUIRED AS WELL AS NAME ON GATE LIST**
- Please bring proper PPE
 - PFD (Personal Flotation Device) Required
- Please limit the number of personnel



QUESTIONS?

Procurement Services

Email: procurement@porthouston.com

Phone: (713) 670- 2464

New BuySpeed URL:

<https://buyspeed.porthouston.com>



PORT HOUSTON