

CSP-3144 - CONSTRUCTION OF CONTAINER YARD 6 AND 7 OF THE RECONSTRUCTION OF 87- ACRES OF CONTAINER YARDS AT BARBOURS CUT TERMINAL

Pre-Proposal Meeting
April 9, 2024
10:00 a.m.

PORT HOUSTON



PORT HOUSTON

AGENDA

1. Pre-Proposal Meeting House Rules
2. Introductions
3. Business Equity
4. Procurement Services
5. Selection Criteria
6. Project Scope
7. Questions



PRE-PROPOSAL MEETING HOUSE RULES

- Attendees will begin the meeting in listen-only mode.
- There will be a Q&A session at the end of today's presentation.
- If you have any questions during the presentation, you may submit your Questions through the Teams Chat feature and they will be addressed at the end of the presentation.
- This presentation recording will be posted on the BuySpeed homepage under "Pre-Bid/Proposal Conference Information."



PHA PERSONNEL

- Roger Hoh– Director, Project & Construction Management
- Harvey Ross – Project Manager
- Yvette Camel-Smith – Director, Procurement
- Alberto Foster – Manager Contracts, Procurement
- Nicole Jones– Contract Administrator, Procurement
- Dr. Sabeeta Bidasie-Singh - Directory, Business Equity
- Brenda Ruiz – Business Equity Supplier Diversity Manager
- Eduardo Mejia - Business Equity Analyst

Non PHA Personnel:

- Robert Rocha – Harris County Wage Rate Monitor
- Vijay, Agrawal – Project Director (Design Team)



Harris County Wage Rate Compliance & Requirements:

- Attendance at pre-bid/proposal meetings and preliminary meetings
- Review and approve weekly certified payroll records
- Monitor wage rate compliance
- Review claims of non-compliance from the field and recommend appropriate responses as required or permitted under the Wage Scale Act



PORT COMMISSION



Ric Campo
Chairman of the Port Commission



Dean E. Corgey
Commissioner



Clyde Fitzgerald
Commissioner



Stephen H. DonCarlos
Commissioner



Wendy Montoya Cloonan
Commissioner



Alan Robb
Commissioner



Thomas Jones, Jr.
Commissioner

BUSINESS EQUITY



PORT HOUSTON

BUSINESS EQUITY S/MWBE INITIATIVE

- Business Equity Division provides resources to small, minority- and woman-owned businesses (S/MWBE) seeking to participate in Port Houston procurements and contracts.
- Port Houston promotes business opportunities for all sectors of the community and recognizes the importance of vendor and supplier diversity in its contracts.
- Port Houston has established an organizational 35% Small Business participation goal and a 30% Minority- and Woman Business Enterprise (MWBE) aspirational goal.

35%

SBE participation
goal

30%

MWBE aspirational
goal



PORT HOUSTON

BUSINESS EQUITY CONTRACT REQUIREMENTS

This project has a required 15% DBE participation.

To be considered responsive you need:

- Meet the 15% DBE requirement
- or good faith efforts are demonstrated



BUSINESS EQUITY CONTRACT REQUIREMENTS continued...

- In order to receive DBE participation credit, a fully executed Letter of Intent MUST be submitted for each DBE subcontractor or supplier listed.
- Please include the DBE's current letter of DBE certification from the Texas Unified Certification Program, including the industry codes the DBE is certified to perform.
- "Texas UCP certified" means an entity meeting the requirements necessary to be considered in calculating DBE participation credit, as set forth in the DBE Special Conditions.



GOOD FAITH EFFORTS- (GFE)



WHAT ARE GOOD FAITH EFFORTS (GFEs)?

“Good Faith Efforts” or “GFE” means efforts to achieve an SBE, MBE, WBE or DBE (as applicable) participation, which efforts, by their scope, intensity, and appropriateness, can reasonably be expected to fulfill the applicable requirement.



GFE- Good Faith Efforts (Attachment 10)

- Good Faith Efforts are not required but are highly encouraged.
- If a bidder anticipates it cannot or will not meet the contract goal, and they do not submit GFE (attachment 10), they will be deemed Non-Responsive.
- GFEs must be submitted with the solicitation. GFE cannot be submitted after solicitation due date.



GFE- Good Faith Efforts (Attachment 10)

Example 1: The proposed DBE subcontractor is waiting on notification of Certification approval.

Example 2: The proposed participation level is very close to the required Goal, and the Bidder desires a margin of safety.

Example 3: Port Houston's evaluation of the proposed participation level determines that the participation level that is counted is less than the level that the Bidder expects, with a result that the total participation level counted fails to meet the Contract Goal.



EVALUATING GFE- Good Faith Efforts (Attachment 10)

- Did Bidder attend pre-bid/pre-proposal meetings?
- Did Bidder ask questions about meeting Contract Goal, either at Pre-Proposal meeting or in BuySpeed's Q&A?
- Follow-up with DBEs attending the meetings to discuss subcontracting opportunities.
- Did Bidder contact DBE found to discuss subcontracting opportunities?

<https://www.txdot.gov/business/disadvantaged-small-business-enterprise/dbe-airport-concessions/dbe-certification-tucp.html>

- Advertise subcontracting opportunities in news media, general circulation, trade, professional association, and/or S/MWBE-focused traditional and social media regarding subcontracting opportunities?



EVALUATING GFE- Good Faith Efforts (Attachment 10)

- Conduct outreach with DBE organizations no less than 10 business days before solicitation due date.
- Does the documentation show that Bidder provided interested DBEs with adequate information about the project's plans, specifications, scope of work, and requirements?

DOCUMENT. DOCUMENT. DOCUMENT. DOCUMENT.



DOCUMENTATION OF GFE

- Emails, and or copies of documentations sent
- Copies of communication to certified firms
- Phone logs with results of the contact. A phone contact list will NOT suffice. (dates, who, result)
- Negotiations made with certified firms.
- Copies of advertising.

DOCUMENT. DOCUMENT. DOCUMENT. DOCUMENT.



Contractors

- Placing qualified DBEs on solicitation lists; DBEs must perform a Commercially Useful Function (CFU) to be counted towards goals;
- Assuring that DBEs are solicited whenever they are potential sources;
- Dividing total requirements, when economically feasible, into smaller tasks or quantities to permit maximum participation by DBEs;
- Establishing delivery schedules, where the requirement permits, which encourage participation by DBEs;



PROCUREMENT



PORT HOUSTON

PROCUREMENT

- No Contact Period – No communication between interested vendors and Port Houston staff during the active period
 - Technical questions should be submitted via BuySpeed
 - Last day to submit questions: 7 days before due date (4/17/2024)
- Responses are due no later than 11 a.m. on 4/24/2024
- Proposals must be submitted electronically via email to:
procurementproposals@porthouston.com
- Use forms in the package
- Anticipated award date: 5/21/2024



EVALUATION CRITERIA

Port Houston will select the provider of the services offering the best value to Port Houston. The criteria and relative weights that will be considered by Port Houston in evaluating each Response are as follows:

Evaluation Criteria	Relative Weight (%)
Price	40
Reputation, Quality, Safety	30
Benefit to Port Authority	20
Overall Compliance with Port Authority Policies	10



SCOPE OF WORK OVERVIEW



PORT HOUSTON

SCOPE OF WORK

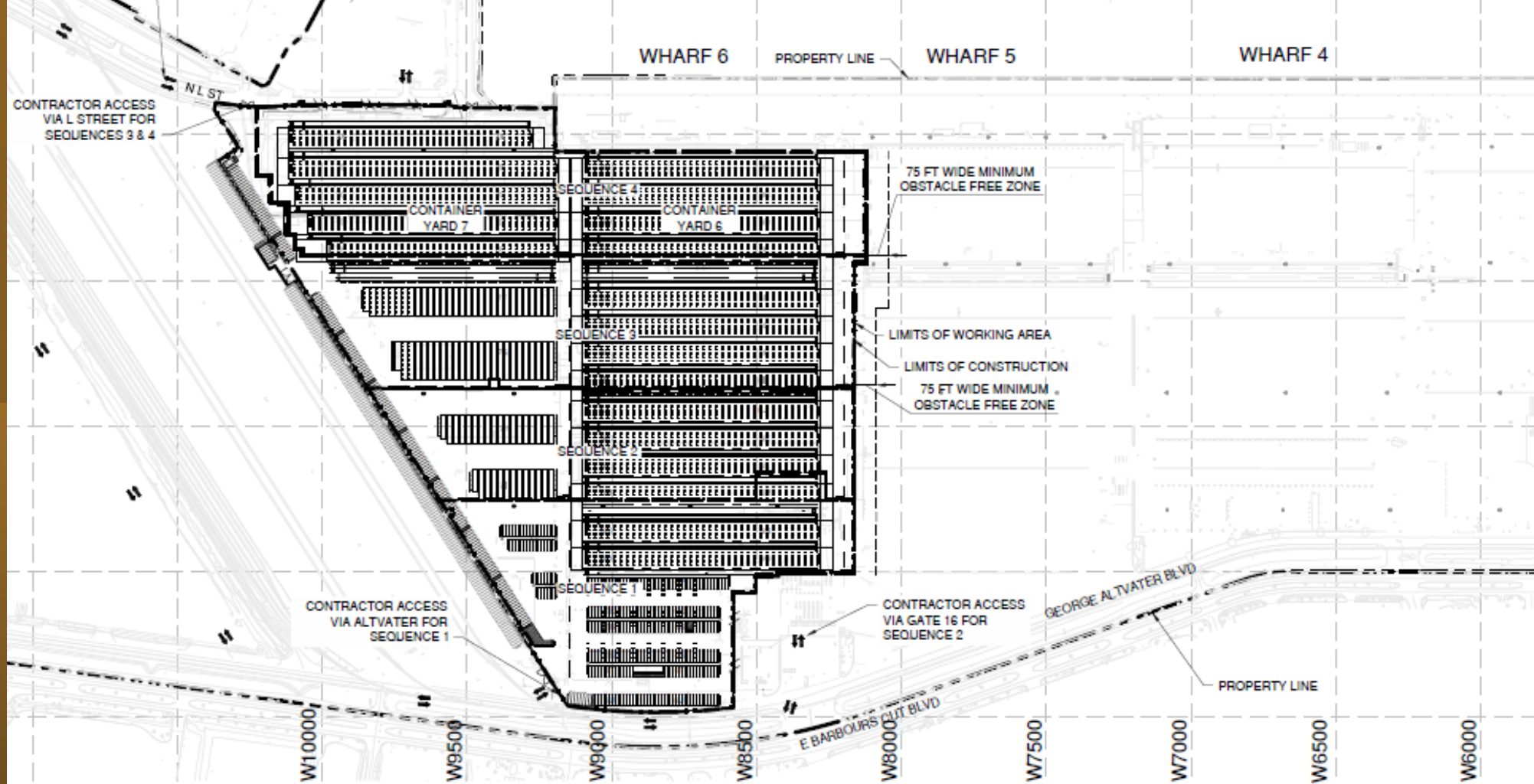
Reconstruction of approximately 69 acres of existing Container Yards at Barbours Cut Terminal as part of the 2020 INFRA Grant. This work will include the demolition and reconstruction of Container Yards 6 and 7 located in the western portion of the Terminal. **Note to Proposers: Submitted Proposals must comply with the Buy America provisions of 23 U.S.C. § 313. Failure to comply with Buy America provisions or to propose on all items may result in rejection of your proposal.**

The major components of this project will include, but not limited to:

- Mobilization/ Demobilization
- Demolition and removal of existing concrete pavement section and existing infrastructure
- Construction/ Installation of :
 - Reinforced concrete pavement and RCC (Roller Compacted Concrete) pavement
 - Underground Utilities (Water, Sanitary Sewer, Storm Sewer)
 - Electrical / Communication (Underground ductbank, High Mast light poles, substations)
 - Deep Foundations (Drilled Shafts and Concrete Piles)
 - Striping and Fencing

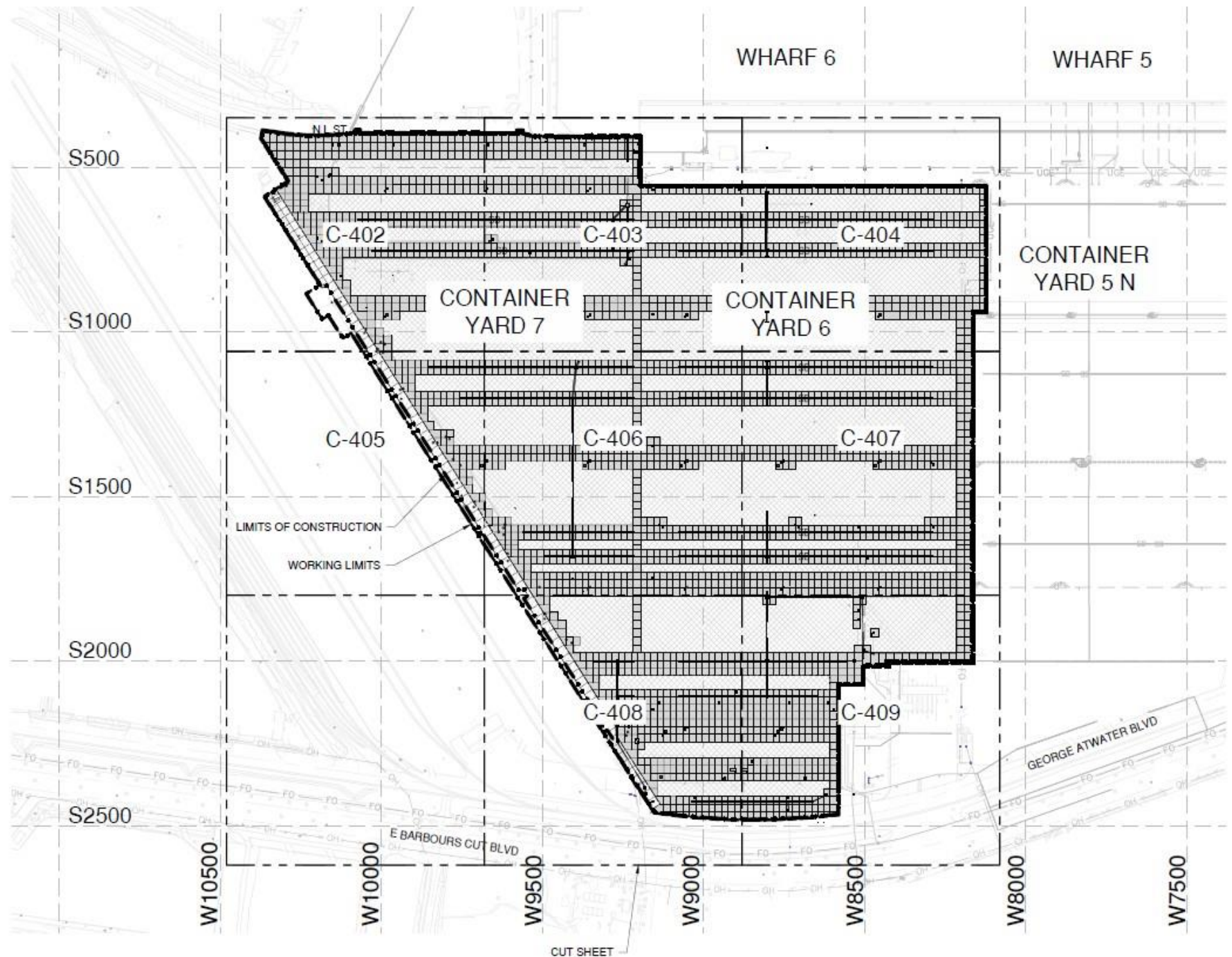


Project Phasing



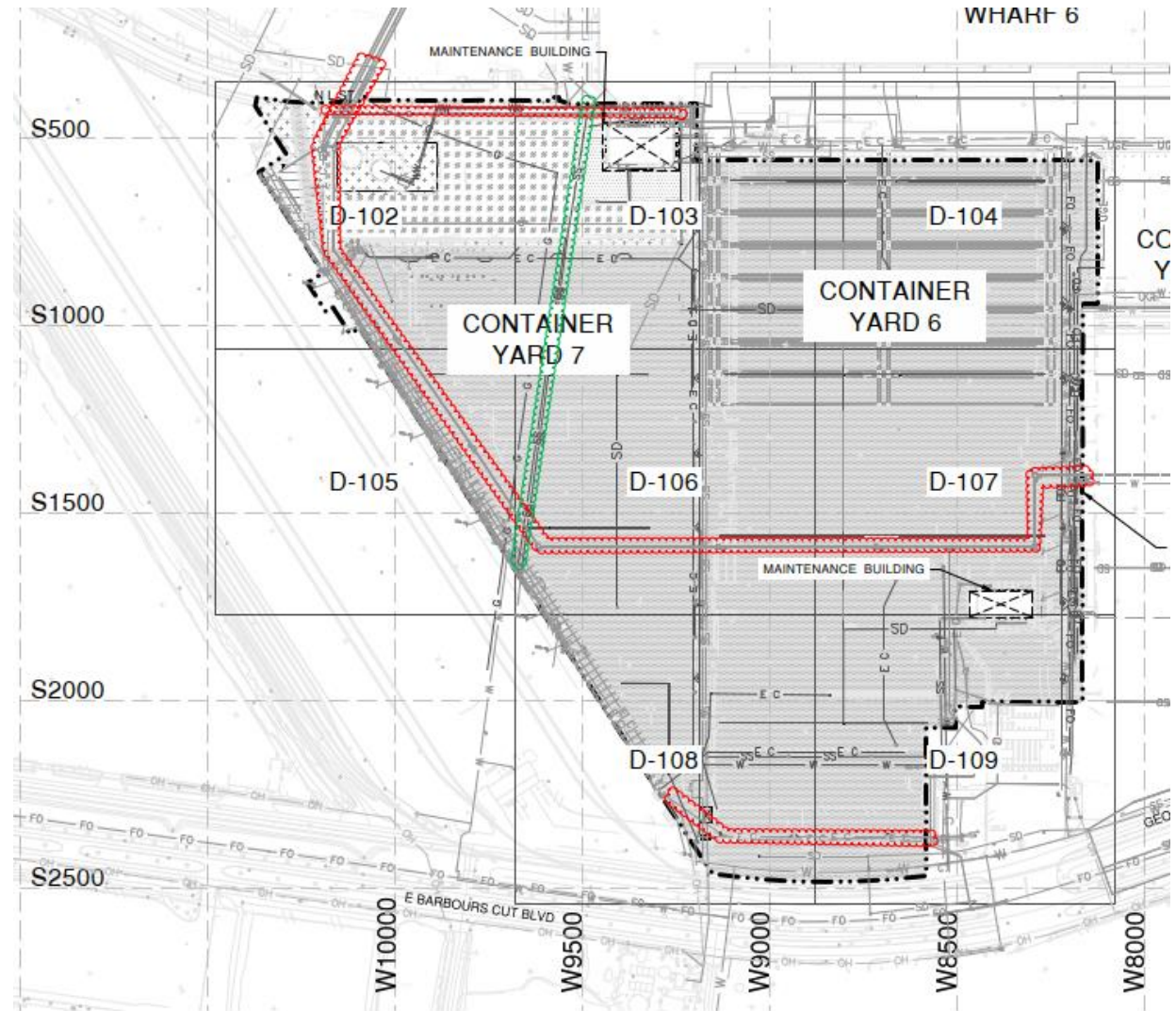
SEQUENCE	GENERAL DESCRIPTION OF SEQUENCE	PREDECESSOR	MAXIMUM DURATION IN CONSECUTIVE CALENDAR DAYS	FINISH OF CONSTRUCTION FROM NTP (CALENDAR DAYS)	NOTES
1	SITE DEMOLITION, BUILDING DEMOLITION, WATERLINE, SEWER, ELECTRICAL, GRADING, DRAINAGE, PAVING, STRIPING, AND REEFERS	NTP + 14 CALENDAR DAYS	351	363	
2	SITE DEMOLITION, WATERLINE, SEWER, ELECTRICAL, GRADING, DRAINAGE, PAVING, AND STRIPING	SEQUENCE 1	314	678	
3	SITE DEMOLITION, WATERLINE, SEWER, ELECTRICAL, GRADING, DRAINAGE, PAVING, AND STRIPING	SEQUENCE 2	343	1022	
4	SITE DEMOLITION, BUILDING DEMOLITION, WATERLINE, SEWER, ELECTRICAL, GRADING, DRAINAGE, PAVING, AND STRIPING	SEQUENCE 3	378	1401	

Paving Plan



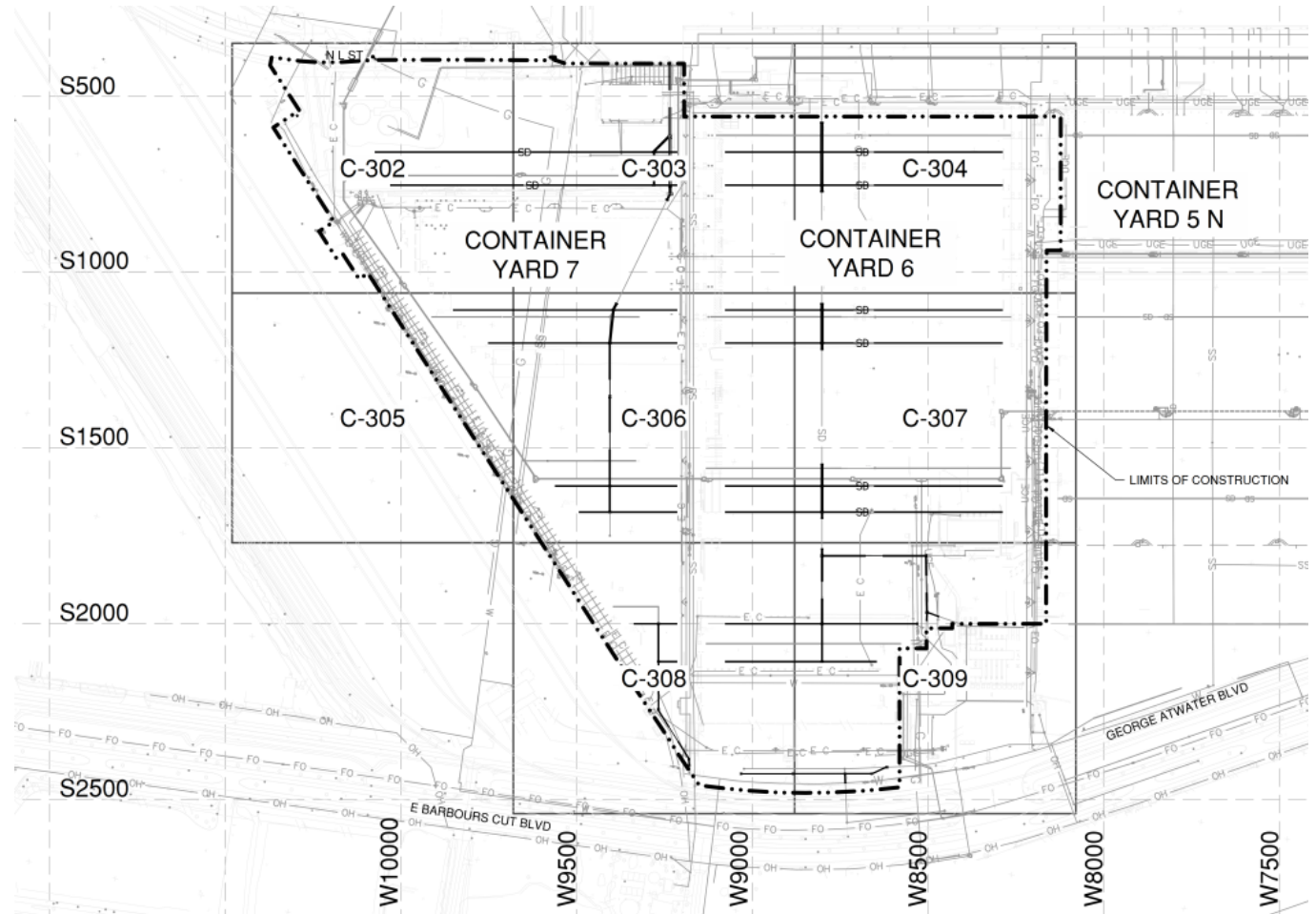
Demolition Scope

- Pavement Removal
- Existing ductbanks must be protected.
- City of Morgans Point Sewer must be protected with steel casing at proposed utility crossings



Storm Drain Scope

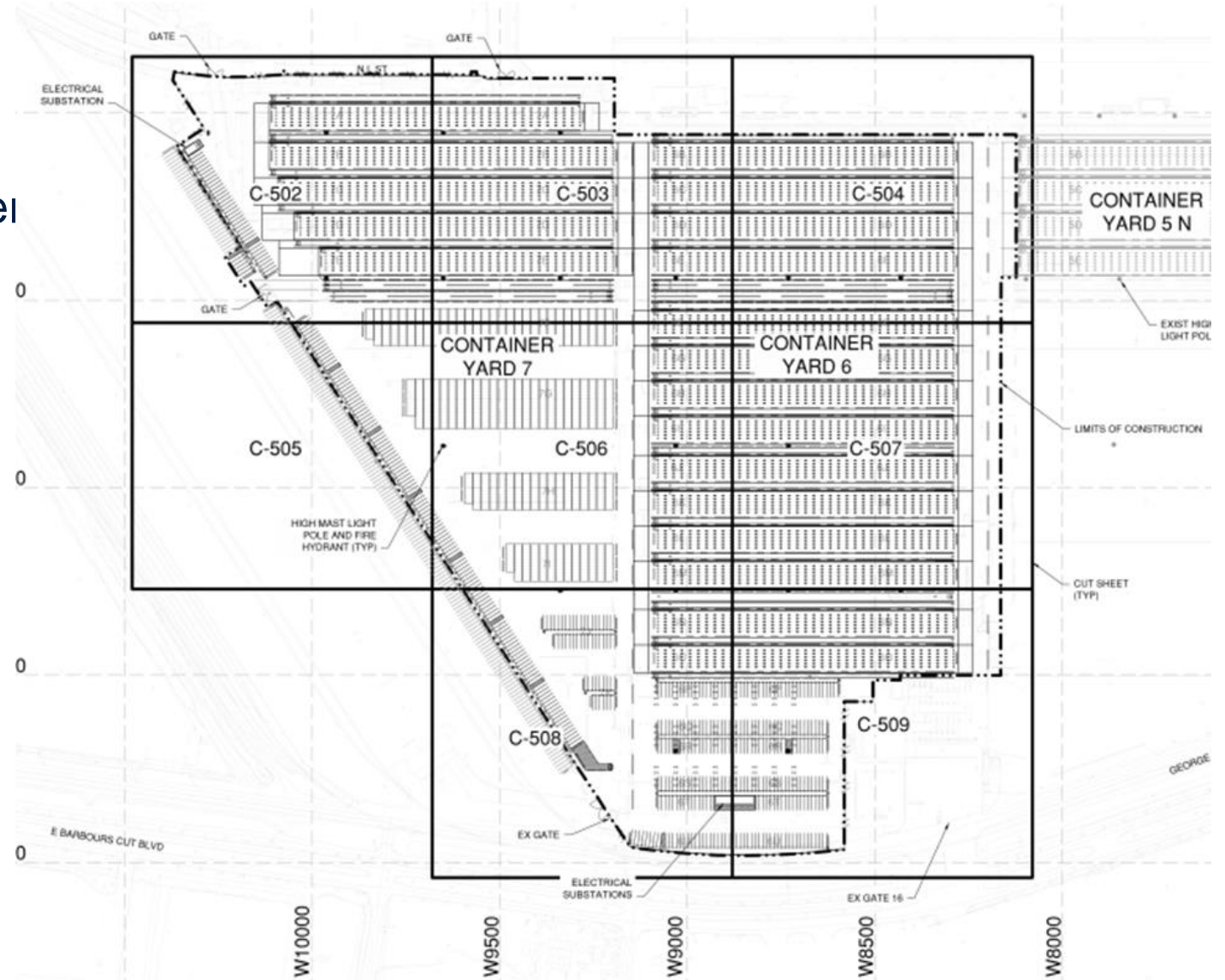
- Trench Drains will be PHA standard
- Sections of existing storm drain mains will be replaced
- Internal spot repair of 72" storm drain as required



STORM DRAIN PLAN - KEY MAP

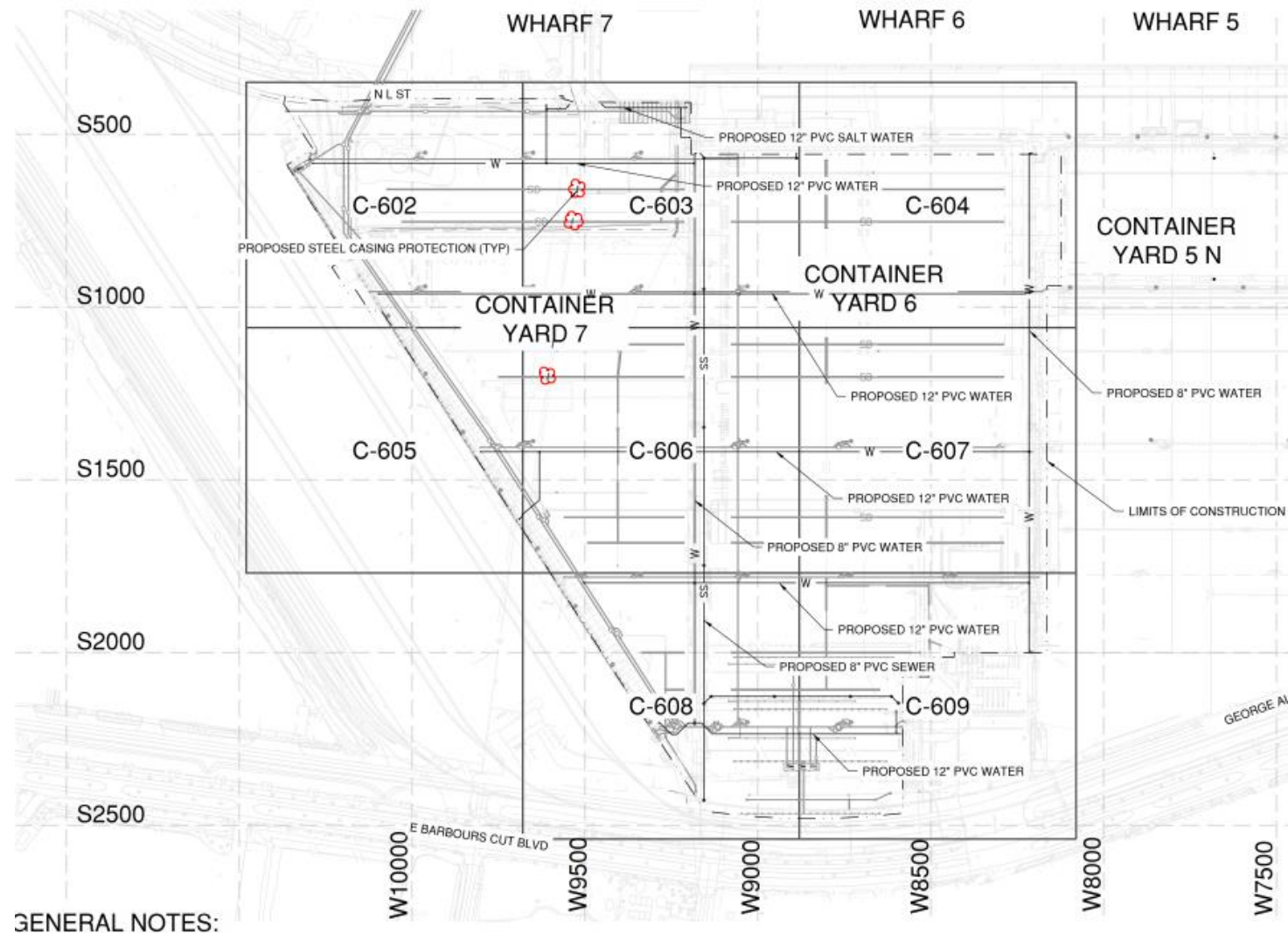
Striping Scope

- Crane Operated Stacked Container Area
- Top Pick Stacked Container Area
- Wheeled Container Parking Stalls
- Roadway Striping
- Chain Link Fencing (w gates) and Fencing on Concrete Barriers (w Barbed Wire)



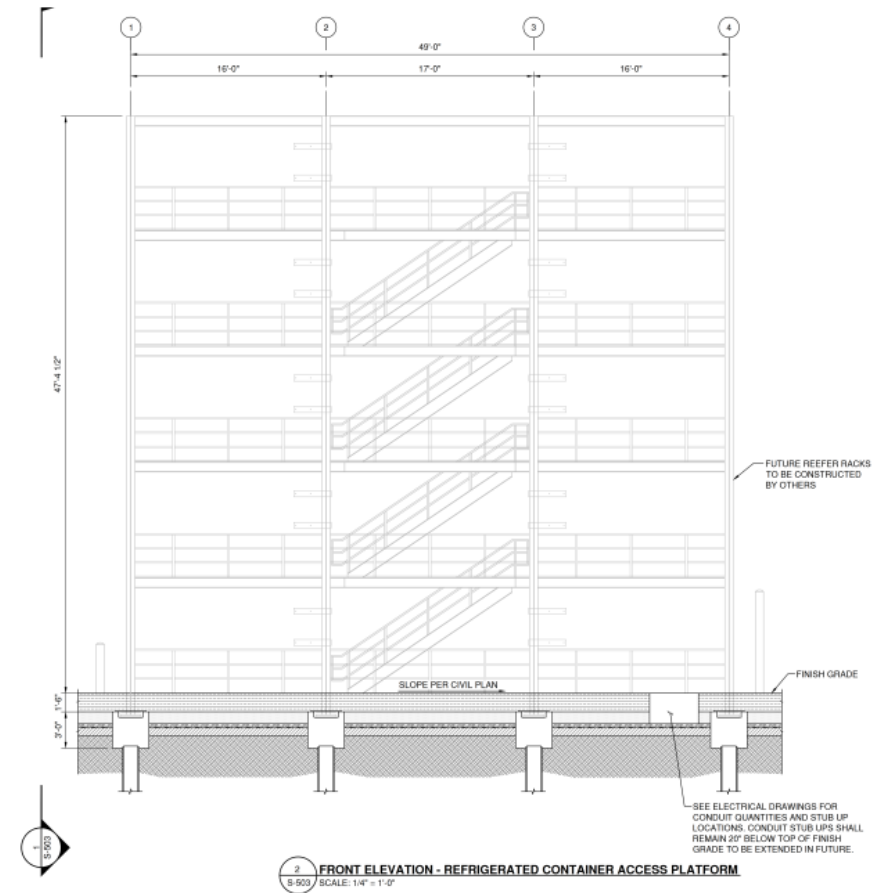
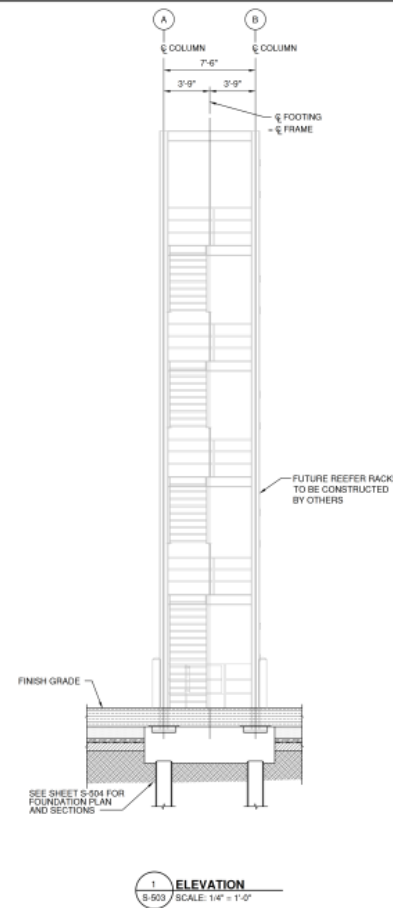
Utility Scope

- Replace existing sewer and water lines
- Looped water system including fire hydrants
- Tie into existing fire water line at L Street
- Some existing lines will be abandoned in place once new lines are operational



Structural Scope

- Foundation system (piles and caps) for future refrigerated container receptacle (reefer) racks
 - Including survey of installation
- Foundations for both high mast light poles and crane tiedowns



Electrical Scope of work

- Underground ductbank infrastructure.
- High Mast Light Poles (HMLP) and Roadway Light including CCTV/RDT Panels.
- Lighting Panels and Lighting Control Panels.
- Medium Voltage and Low Voltage conductors
 - Outages at the BCT Terminal may not be allowed and contractor shall arrange for special provisions.
 - Refer to Bid Plans (cable pull and one-line diagrams, etc.) for splicing, pull points, and sequencing.
- Reefer Pedestals and Reefer Substation in CY7N along diagonal.
 - Includes circuit reconfiguration of existing reefers and HMLPs along Eastern Diagonal.
- Reefer Bunkers and Reefer Substations in CY6S
- MV Circuit reconfiguration of Substation RSS-C7-2A/2B at South end of diagonal
- Installation of underground electrical infrastructure for future Reefer racks
- Testing and Commissioning of electrical scope



Telecomm Scope of work

- Fiber distribution network with splice closures located in handholes.
- 12 strand fiber to each HMLP and Reefer Substations (RSSs).
- HMLP Wireless Access Points (Refer to BOM)
- Patch panels and appurtenances at BLDG 919 (adjacent to project limit), HMLPs, and RSSs
- Testing and Commissioning of the fiber network system.



SITE VISIT

- Date: April 9, 2024
- Time 2:00 PM
- Address: Barbours Cut Terminal, Adm. Bldg., 1819 E. Barbours Cut Boulevard, La Porte, Texas 77571, Large Conference Room
- PROPER PPE & ID REQUIRED, PREFERABLY TWIC



QUESTIONS?

Procurement Services

Email: procurement@porthouston.com

Phone: (713) 670- 2464

New BuySpeed URL:

<https://buyspeed.porthouston.com>



PORT HOUSTON