



**PORT HOUSTON**  
THE INTERNATIONAL PORT OF TEXAS™

# PLANNING AND DESIGN OF WATER LINE REHABILITATION AT SOUTH TURNING BASIN

## TERMINAL

RFQ-1970 Preliminary Meeting

Craig J. Kasper, P.E.  
Project Manager  
September 8, 2021



# Port Commission



**PORT HOUSTON**  
THE INTERNATIONAL PORT OF TEXAS™



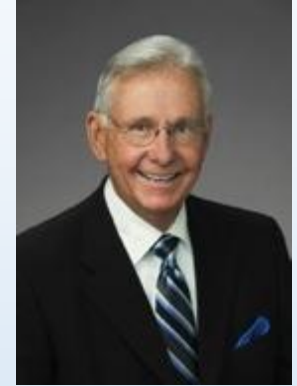
**Ric Campo**  
*Chairman*



**Wendy M. Cloonan**



**Dean E. Corgey**



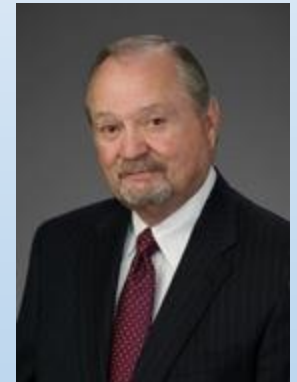
**Clyde Fitzgerald**



**Cheryl D. Creuzot**



**Stephen H. DonCarlos**



**Roy D. Mease**

# DESIGN OF WATER LINE REHABILITATION AT SOUTH TURNING BASIN TERMINAL

## Pre-proposal Meeting



### AGENDA

1. Safety Moment
2. Introductions
3. Procurement
4. Selection Criteria
5. Project Description
6. Project Location
7. Questions

All attendees must sign-in and indicate attendance for site visit

# DESIGN OF WATER LINE REHABILITATION AT SOUTH TURNING BASIN TERMINAL

## Pre-proposal Meeting

### Safety Moment

- When the Power Goes Out, Keep Your Generator Outside<sup>1</sup>
  - Portable back-up generators produce carbon monoxide (CO). CO is an odorless, colorless gas that claims the lives of hundreds of people every year and makes many more ill. Often called the “invisible killer”.
  - Never use portable generators inside your home or garage, even if doors and windows are open
  - Only use generators outside, more than 20-feet away from your home, doors, and windows.<sup>2</sup>
  - Install battery-operated or battery back-up CO detectors near every sleeping area in your home. Check detectors regularly to ensure they are working properly.

### **Hurricane Ida aftermath: Officials issue warning about generators after 3 killed by carbon monoxide**

Carbon monoxide is an 'invisible killer' because it has no color or odor



US Consumer Product Safety Commission  
@USCPSC



Replying to @USCPSC

Portable generator owners might not realize how much carbon monoxide their generator can produce. One portable generator can create the same amount of carbon monoxide as \*hundreds\* of mid-sized cars.

1. Carbon Monoxide - Generator Safety Fact Sheet | Natural Disasters and Severe Weather | cdc.gov

2. Hurricane Ida aftermath: Officials issue warning about generators after 3 killed by carbon monoxide | Fox Business

# DESIGN OF WATER LINE REHABILITATION AT SOUTH TURNING BASIN TERMINAL Pre-proposal Meeting



## PHA Personnel:

Randy Stiefel – Director, Multipurpose Facilities

Roger H. Hoh, P.E. – Director, PCM

Craig J. Kasper, P.E. – Project Manager, PCM

Yvette Camel-Smith – Director, Procurement Services

Dean Ainuddin – Manager, Contracts - Procurement Services

Conni McMillian – Contract Administrator - Procurement Services

Pedro Gonzalez, P.E. – Manager, Business Equity

# DESIGN OF WATER LINE REHABILITATION AT SOUTH TURNING BASIN TERMINAL

## Pre-proposal Meeting



### Procurement:

- Request for Qualifications (RFQ) due Wednesday September 22, 2021 no later than 11:00 A.M.
- 20 Page Maximum
- Qualifications MUST be submitted via email to [Procurement@porthouston.com](mailto:Procurement@porthouston.com). Please reference the project number and description in the subject heading.
- Any questions regarding submittal procedures should be directed to Ms. Yvette Camel-Smith at (713) 670-2460
- Technical questions should be submitted through the Port Authority BuySpeed eProcurement System (BuySpeed), at <https://buyspeed.poha.com>

# DESIGN OF WATER LINE REHABILITATION AT SOUTH TURNING BASIN TERMINAL

## Pre-proposal Meeting



### Selection Criteria and Relative Weights:

- Respondent's (and Sub-Consultants if applicable) Reputation and Quality of Services. (25%)
- Personnel (Including Sub-Consultant Personnel if applicable) Qualifications and Experience. (40%)
- Performance Plan and Other Benefits. (30%)
- Overall Compliance with PHA Policies (5%)



**PORT HOUSTON**  
THE INTERNATIONAL PORT OF TEXAS

---

The **New Business Equity Division** provides resources to small, minority- and woman-owned businesses (S/MWBE) seeking to participate in Port Houston procurements and contracts

---

Our goal is to achieve and maintain a 35% overall Small Business (SBE) participation and aspire to reach a 30% Minority- and Woman-Owned Business (MWBE) participation

---





### **Small Business Enterprise (SBE)**

Small Business Enterprise “SBE” means a firm whose gross revenues or number of employees, averaged over the past three years, inclusive of any affiliates as defined by 13 CFR § 121.103, does not exceed the size standards defined in Section 3 of the Federal Small Business Act and applicable Small Business Administration regulations related to the size standards found in 12 CFR §121. The net worth of the owner must be less than \$1.32 million, excluding the owner’s primary residence and assets of the business.

### **Minority Business Enterprise (MBE)**

Minority-Owned Business Enterprise “MBE” means a Business that is at least 51% Owned by one or more Minority Persons, or for which at least 51% of the equity is Owned by one or more Minority Persons, and both the management and daily business operations are carried out and controlled by one or more of the Minority Persons who own it.

## Small and MWBEs must meet certain criteria and be certified with one of the following partner agencies to be enrolled in Port Houston Programs:

- \*City of Houston (SBE, MBE, WBE)
  - Houston Minority Supplier Development Council (MBE)
  - \*METRO (SBE)
  - National Minority Supplier Development Council
  - \*SBA 8(a) (SDB)
  - \*State of Texas HUB Certification (HUB)
  - South Texas Central Regional Certification Agency (SBE, MBE, WBE)
  - \*Texas Department of Transportation (SBE)
  - Women's Business Enterprise Alliance (WBE)
- \*organizations that do not charge a fee to apply

## Woman Business Enterprise (WBE)

Woman-Owned Business Enterprise “WBE” means a Business that is at least 51% Owned by one or more females, or for which at least 51% of the equity is Owned by one or more females, and both the management and daily business operations are carried out and controlled by one or more of the female who own the business.

## MWBE and SBE Policies

The Port Commission, at its April 27, 2021 meeting, approved the NEW Minority- and Woman-Owned Business Enterprise Development Policy and the Amended and Restated Small Business Development Policy.

**Contractor is encouraged to and agrees to:**

- Placing qualified small businesses and MWBEs on subcontractor and supplier solicitation lists;
- Assuring that small and minority businesses, and women's business enterprises are solicited whenever they are potential sources; Attempt to solicit small businesses and MWBEs whenever they are potential participants for the work;
- Dividing total requirements, when economically feasible, into smaller tasks or quantities to permit maximum participation by small and minority and woman owned business enterprises;

- Establishing delivery schedules, where the requirement permits, which encourage participation by small and minority businesses, and women's business enterprises;
- Using the services and assistance, as appropriate, of such organizations as the Small Business Administration and the Minority Business Development Agency of the Department of Commerce; and
- Use the services and assistance, as appropriate, of Port Houston's Business Equity Division in such aspirational efforts.
- Requiring the prime contractor, if subcontracts are to be let, to take the affirmative steps listed in paragraphs (b)(1) through (5) of this section.

This project is a Request for Qualifications for engineering services. The selection of the firm will be based solely on qualifications per Government Code 2254.004. No points will be assigned for SMWBE participation on this project but their participation is strongly recommended.



# DESIGN OF WATER LINE REHABILITATION AT SOUTH TURNING BASIN TERMINAL

## Pre-proposal Meeting

### PHA Business Equity Division:

- See Section V(J) of RFQ.

#### **J. Diversity, Equity, and Inclusion**

As further described in Section VI(B) of this RFQ, Port Houston has a non-discrimination mandate, promotes business opportunities for all sectors of the community, and recognizes the importance of vendor and supplier diversity in its contracts.

Submissions must describe how your firm encourages the development, utilization, and economic growth of small and minority-, woman-, veteran-, service-disabled veteran-, and LGBTQ-owned companies, businesses owned by persons with disabilities, and historically under-utilized businesses in the work requested by this RFQ and other work performed by your firm, and its future plans for doing so.

# DESIGN OF WATER LINE REHABILITATION AT SOUTH TURNING BASIN TERMINAL

## Pre-proposal Meeting



PORT HOUSTON  
THE INTERNATIONAL PORT OF TEXAS

### Project Description:

- Port Houston is seeking professional engineering services to perform the following:
  - Condition assessment, planning, and design for the rehabilitation of water lines located at Wharves 1, 2, 3, and 4 and Wharves 41, 42, 43, 44, 45, 46, 47, and 48 at the Turning Basin Terminal
- The Southside Wharves were constructed in the early to mid-1900's. The water distribution system is largely original to the structures and is at the end of useful service life, requiring repair and/or replacement.
- The water system supports the fire hydrants used for fire protection and provides potable water services to the berths, backlands, warehouses, and tenant facilities.
- Selected firm or team shall have expertise in water distribution systems for potable water and fire protection supply.
  - Additional services may include land surveying, mapping and GIS services, and development of baseline condition inspection and assessment reports.



# DESIGN OF WATER LINE REHABILITATION AT SOUTH TURNING BASIN TERMINAL

## Pre-proposal Meeting



### Project Scope of Work:

1. Perform site investigations and evaluations required to design all elements included in the project scope.
  - Review existing records, reports, and any field utility information to evaluate the water system.
  - Design of water distribution system must achieve necessary pressures and flow rates to satisfy all applicable codes and regulations (USCG and NFPA, etc.).
  - System design shall equal current industry standards, such as AWWA design manuals for water distribution and delivery systems.
2. Assist in the development of condition assessment reports for inclusion in PHA's Facility Inspection and Condition Assessment Program (FICAP) initiative.
3. Perform modeling, field testing, and/or hydraulic analysis on the water distribution system. Assist with permitting efforts, should any apply.

# DESIGN OF WATER LINE REHABILITATION AT SOUTH TURNING BASIN TERMINAL

## Pre-proposal Meeting

### Project Scope of Work (cont'd):

4. Special consultant capabilities include experience in water distribution system supply and delivery, utility asset organization and valuation, GIS integration with AutoCAD, surveying, certified cost estimator, and schedule analysis in support of design and construction work.
5. Provide all final design engineering services required to develop construction packages and seal. Phased construction may be necessary for Port Operations.
6. Prepare addenda, competitive seal bid or proposal packages for the construction phase of the project during the bid/proposal period if required, review construction bid/proposals and assist the Port Authority during negotiations with the selected contractor.
7. Perform Construction Phase Services (CPS) including, but not limited to reviewing submittals and shop drawings, responding to Requests for Information (RFI), approving as-built drawings, perform site visits and substantial completion inspections as needed.

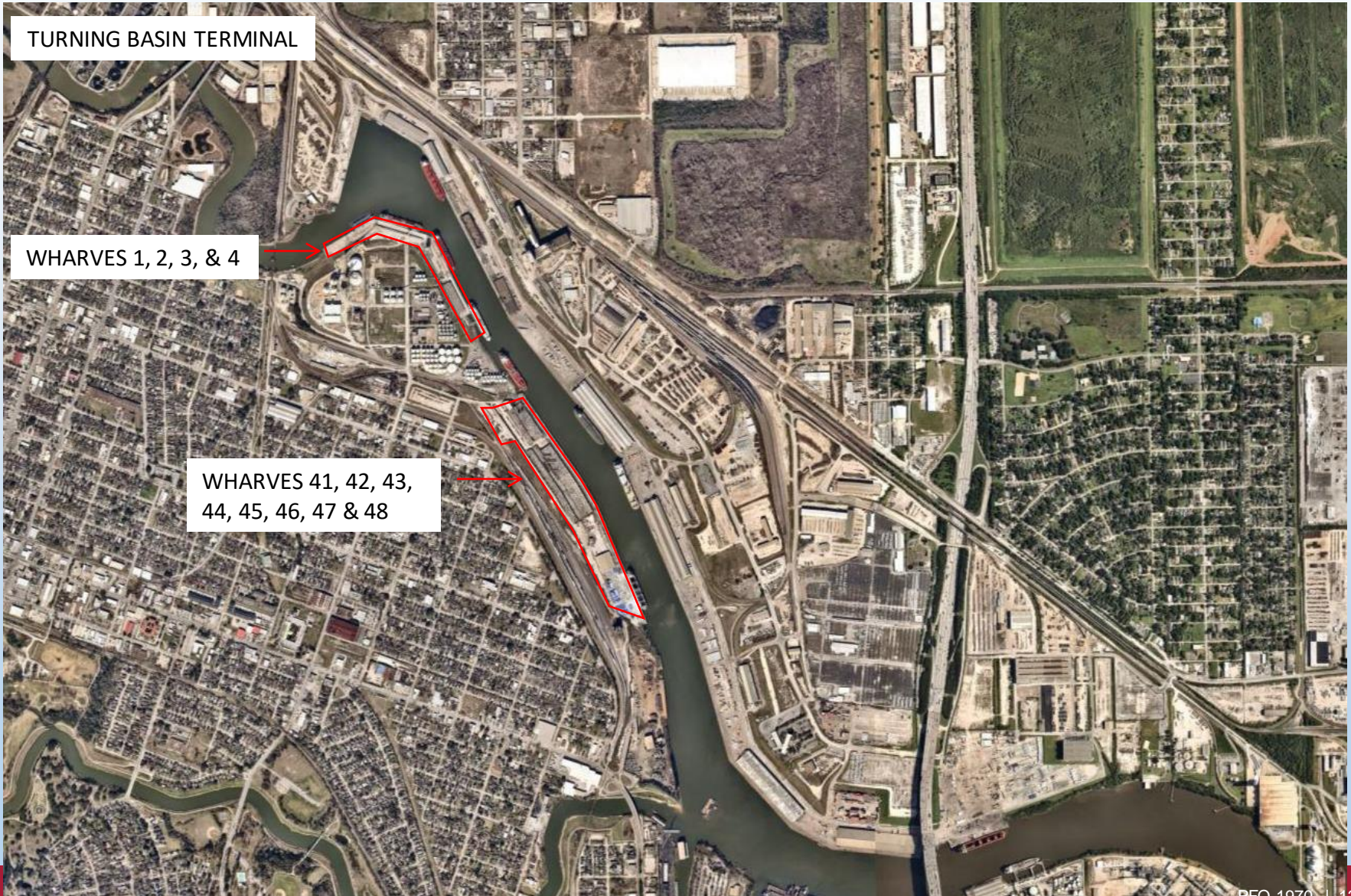


PORT HOUSTON  
THE INTERNATIONAL PORT OF TEXAS

# AERIAL VIEW OF TURNING BASIN TERMINAL



**PORT HOUSTON**  
THE INTERNATIONAL PORT OF TEXAS



TURNING BASIN TERMINAL

WHARVES 1, 2, 3, & 4

WHARVES 41, 42, 43,  
44, 45, 46, 47 & 48



# DESIGN OF WATER LINE REHABILITATION AT SOUTH TURNING BASIN TERMINAL



PORT HOUSTON  
THE INTERNATIONAL PORT OF TEXAS

Questions concerning this procurement should be submitted via the Q/A tab on BuySpeed.

For assistance, email [procurement@porthouston.com](mailto:procurement@porthouston.com)



**PORT HOUSTON**  
THE INTERNATIONAL PORT OF TEXAS™

# THANK YOU

**Craig J. Kasper, P.E.**

Project Manager  
Port Houston

[Procurement@porthouston.com](mailto:Procurement@porthouston.com)

[www.PortHouston.com](http://www.PortHouston.com)

111 East Loop North  
Houston, TX 77029