

Pre-Proposal Meeting:

RFQ-2662 DESIGN OF WHARF 1 AT BAYPORT CONTAINER TERMINAL

March 21, 2023

10:00 a.m.

PORT HOUSTON



PORT HOUSTON™

AGENDA

1. Pre-Proposal Meeting House Rules
2. Safety Moment & DEI Moment
3. Introductions
4. Business Equity
5. Procurement Services
6. Selection Criteria
7. Project Scope
8. Questions



PRE-PROPOSAL MEETING HOUSE RULES

- Attendees will begin the meeting in listen-only mode.
- There will be a Q&A session at the end of today's presentation.
- If you have any questions during the presentation, you may submit your Questions through the WebEx Q&A feature and they will be addressed at the end of the presentation.
- This presentation recording will be posted on the BuySpeed homepage under "Pre-Bid/Proposal Conference Information."

Safety Moment:

March is National Ladder Safety Month

1. Get the right-sized ladder for the job
2. Place your ladder on firm, level ground
3. Take your time climbing down – don't skip any steps!
4. Keep 3 points of contact when climbing up or down
5. Stay within your reach



NATIONAL LADDER SAFETY MONTH

MARCH 2023

Ladder Safety and How It Affects Everyone

The numbers speak for themselves.

500,000+	300+	\$24B
people treated each year for ladder-related falls*	deaths from ladder falls each year**	annual cost to the U.S. for work loss, medical, legal, liability, and pain and suffering expenses from falls

Whether you're using a ladder at home or at work, these numbers affect YOU.

2 most common ladder accidents include:

1. Missing the last step when climbing down
2. Overreaching

*CPSC (US Consumer Product Safety Commission) [2014]. Unpublished data from the National Injury Information Clearinghouse (CPSC) using the CPSC's Injury Cost Model.
**CDC, National Center for Health Statistics [2017]. Multiple Cause of Death 1999-2015 on CDC WONDER Online Database.

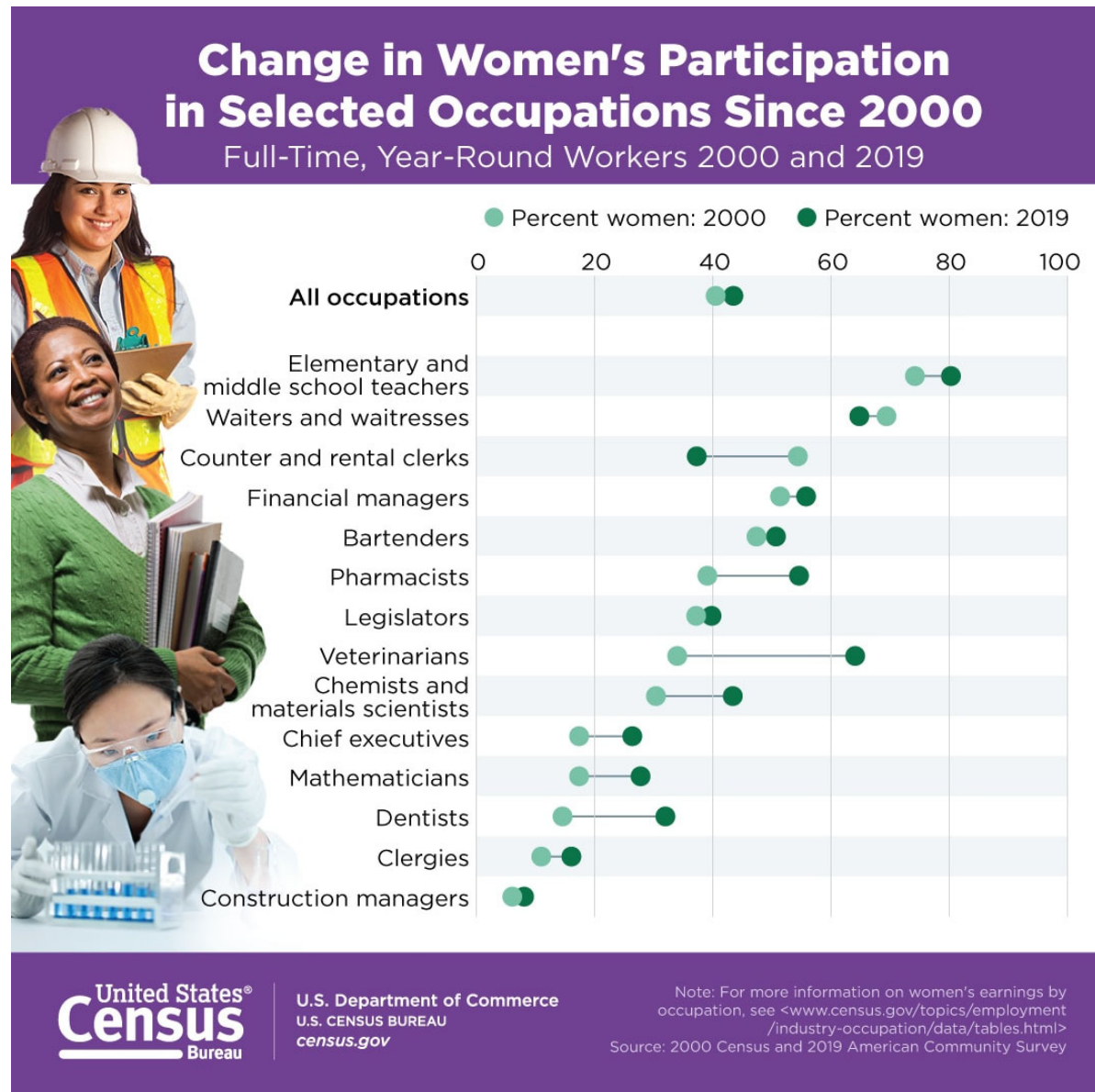


PORT HOUSTON

DEI Moment:

March is Women's History Month

- 1909 – First Women's Day Celebration
- 1981 – Congress established National Women's History Week
- 1987 – Congress designated March Women's History Month



PHA Personnel:

Roger Hoh – Director, Project Construction Management

Jessica Shambra – Project Manager

Yvette Camel-Smith – Director, Procurement

Tanika Chukwumerije – Manager Contracts, Procurement

Sommer Freeman – Contract Administrator, Procurement

Brenda Ruiz – Business Equity Manager



PORT COMMISSION



Ric Campo
Chairman of the Port Commission



Dean E. Corgey
Commissioner



Clyde Fitzgerald
Commissioner



Stephen H. DonCarlos
Commissioner



Roy D. Mease
Commissioner



Wendy Montoya Cloonan
Commissioner



Cheryl D. Cruzot
Commissioner



PORT HOUSTON

BUSINESS EQUITY



PORT HOUSTON

BUSINESS EQUITY S/MWBE INITIATIVE

- Business Equity Division provides resources to small, minority- and woman-owned businesses (S/MWBE) seeking to participate in Port Houston procurements and contracts.
- Port Houston promotes business opportunities for all sectors of the community and recognizes the importance of vendor and supplier diversity in its contracts.
- Port Houston has established an organizational 35% Small Business participation goal and a 30% Minority- and Woman Business Enterprise (MWBE) aspirational goal.



BUSINESS EQUITY DEFINITIONS

Small Business Enterprise (SBE)

- Gross revenues or number of employees, averaged over the past three years does not exceed the size standards defined by SBA.
- The net worth of the owner must be less than \$1.32 million, excluding the owner's primary residence and assets of the business.

Minority Business Enterprise (MBE)

- At least 51% Owned by one or more Minority Individuals, or at least 51% of the equity is Owned by one or more Minority Individuals.
- Both the management and daily business operations are carried out and controlled by one or more of the Minority Individuals who own it.

Woman-Owned Business Enterprise (WBE)

- At least 51% Owned by one or more Women, or at least 51% of the equity is Owned by one or more Women
- Both the management and daily business operations are carried out and controlled by one or more of the Women who own it.



CERTIFYING PARTNERS

- City of Houston *
- Houston Minority Supplier Development Council
- METRO *
- National Minority Supplier Development Council & Affiliates
- Small Business Administration 8(a) *
- South Central Texas Regional Certification Agency – SCTRCA *
- Texas Comptroller of Public Accounts – HUB Certification
- Texas Department of Transportation – TxDOT *
- Women’s Business Enterprise Alliance
- Women’s Business Enterprise National Council & Affiliates – WBENC

* No fee to apply



PORT HOUSTON S/MWBE ENROLLMENT DIRECTORY

How do I identify Port Houston enrolled small, minority- and woman-owned businesses (S/MWBE)?

Search for businesses in 2 easy steps:

1. Visit <https://porthouston.smwbe.com>

Under the section on the left labeled Small, Minority and Woman Owned Business

Directory and Online Application select the blue button labeled, "Find a S/MWBE Firm".

2. You will need to complete at least one of the fields in the popup window titled, Port Houston S/MWBE Enrollment Directory and Search.

www.porthouston.smwbe.com

https://porthouston.smwbe.com/Default.asp?

PORT HOUSTON
THE INTERNATIONAL PORT OF TEXAS™

OUR MAIN SITE CONTACTS AND SUPPORT

PORT HOUSTON
BUSINESS EQUITY
COMPLIANCE SYSTEM

Log In

SMALL, MINORITY AND WOMAN OWNED BUSINESS DIRECTORY AND ONLINE APPLICATION
Search for small, minority, and woman-owned businesses enrolled in Port Houston's Business Equity Programs, and/or apply to become an enrolled small, minority or woman-owned business.

OUTREACH & PROGRAM NOTICES
Business Networking Events

Detailed Description
RSVP For An Event

SYSTEM TRAINING

Find a SMWBE Firm



PORT HOUSTON™

BUSINESS EQUITY CONTRACT REQUIREMENTS

This project is does not have any Business Equity requirements, but we highly encourage the use of small, minority- and woman-owned business when possible.



PORT HOUSTON

PROCUREMENT



PORT HOUSTON

PROCUREMENT

- No Contact Period – No communication between interested vendors and Port Houston staff during the active period.
 - Technical questions should be submitted via BuySpeed
 - Last day to submit questions: 7 days before due date (4/12/2023)
- Responses are due no later than 11 a.m. on 4/19/2023
- Proposals must be submitted electronically via email to: procurementproposals@porthouston.com
- Use forms in the package
- Anticipated award date: 6/27/2023

EVALUATION CRITERIA

Port Houston will select the **most highly qualified** provider of the services based on **demonstrated competence and qualifications**. The criteria and relative weights that will be considered by Port Houston in evaluating each Response are as follows:

Evaluation Criteria	Relative Weight (%)
Respondent's Reputation and Quality of Services	25
Personnel Qualifications and Experience	40
Performance Plan and Other Benefits	30
Overall Compliance with Port Houston Policies	5

SCOPE OF WORK OVERVIEW



PORT HOUSTON

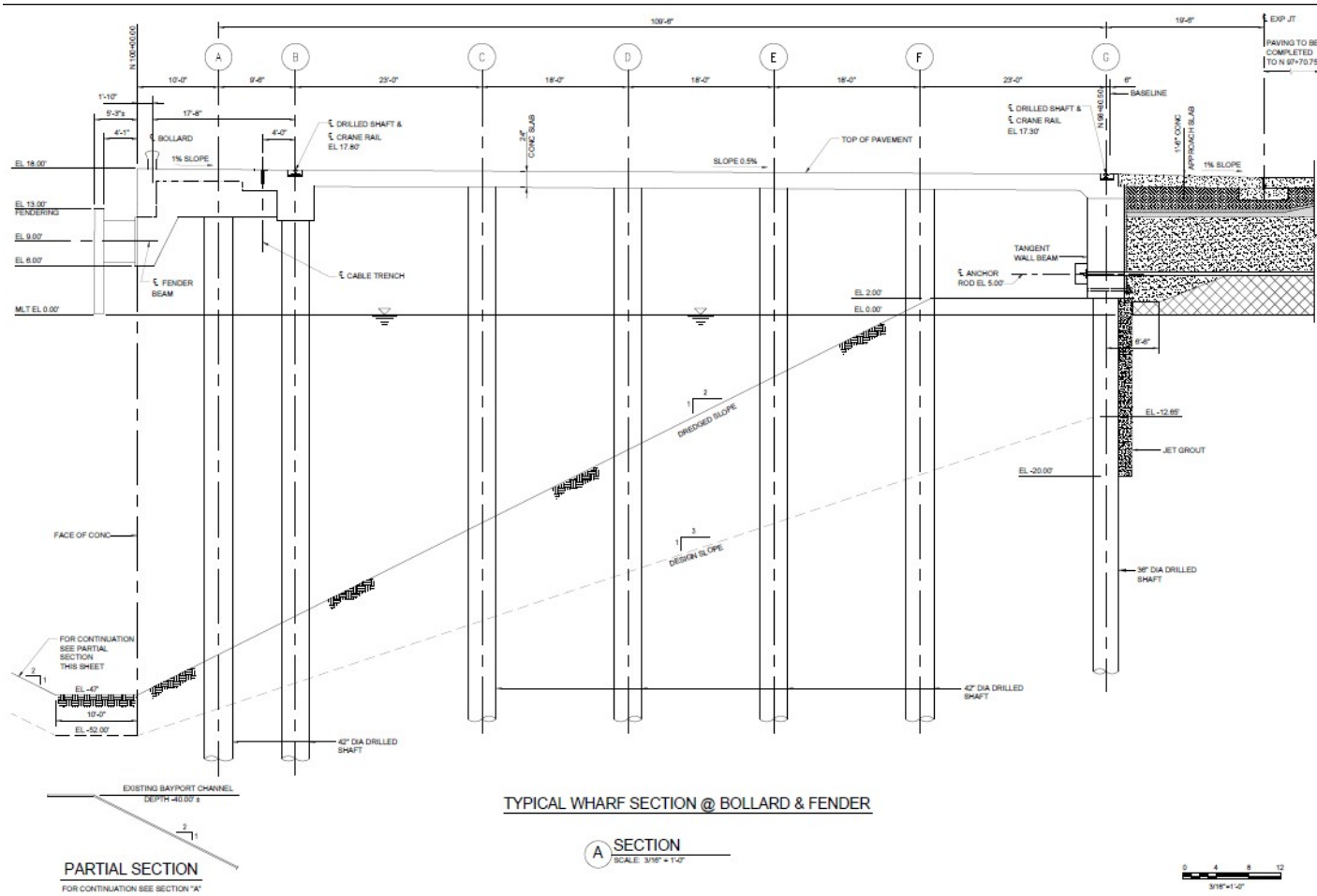
Bayport Wharf 1 Site Location



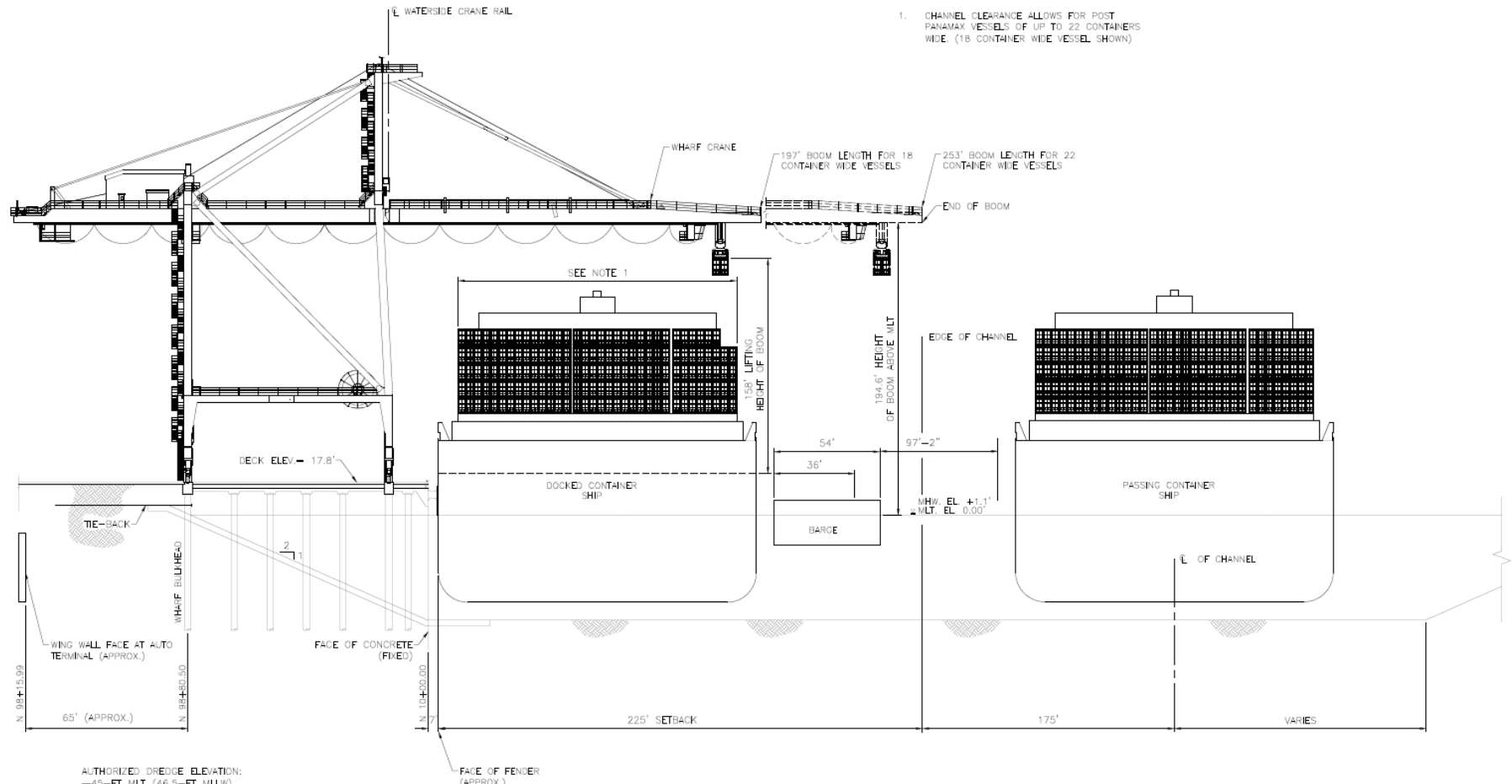
Bayport Wharf 1 Length



Bayport Wharf Typical Cross Section



Bayport Wharf Typical Cross Section



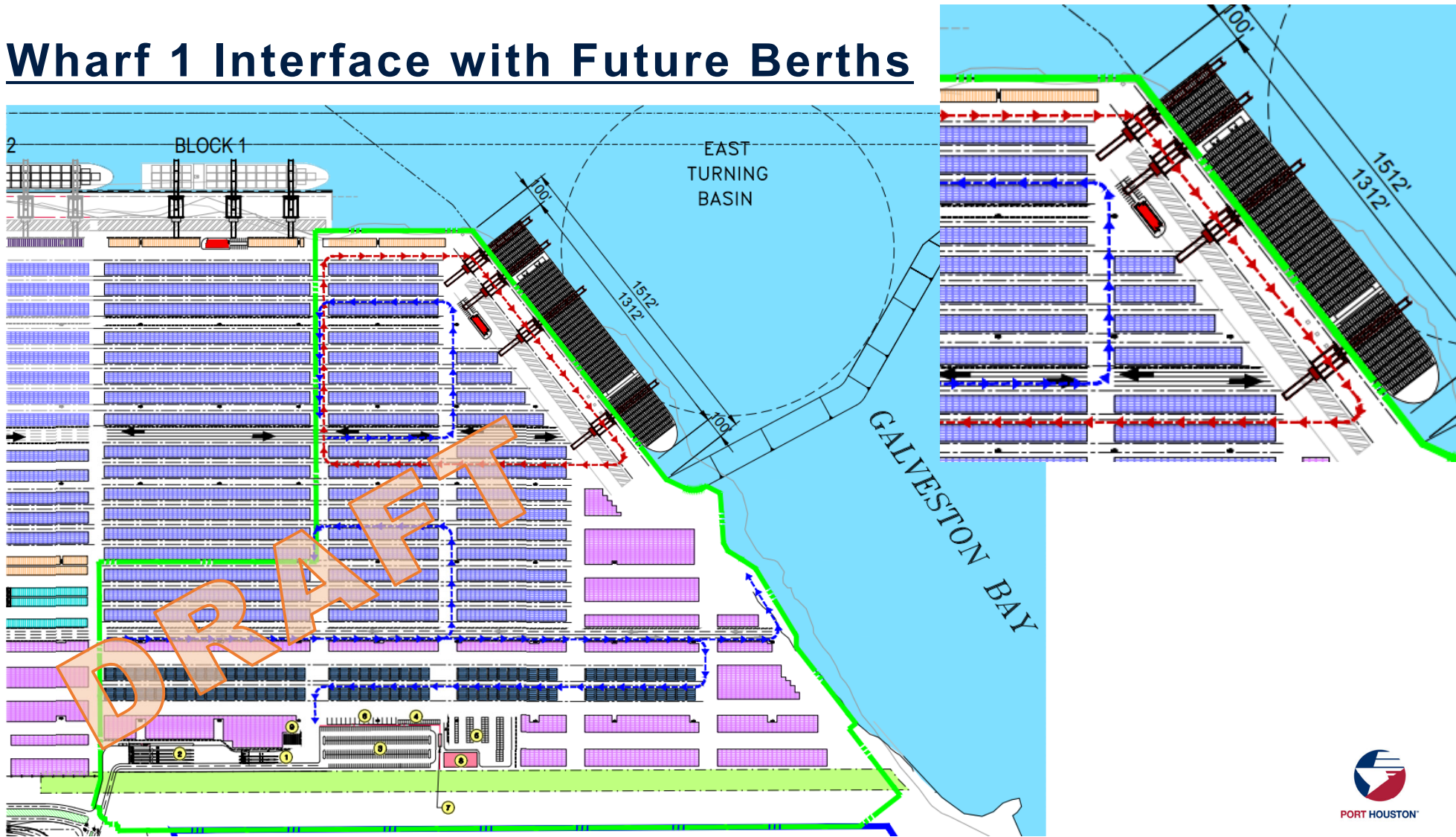
NOTE:
 1. CHANNEL CLEARANCE ALLOWS FOR POST PANAMAX VESSELS OF UP TO 22 CONTAINERS WIDE. (18 CONTAINER WIDE VESSEL SHOWN)

AUTHORIZED DREDGE ELEVATION:
 -45-FT MLT (-46.5-FT MLLW)
 ADVANCED MAINTENANCE PLUS OVERDEPTH DREDGE ELEVATION:
 -49-FT MLT (-50.5-FT MLLW)

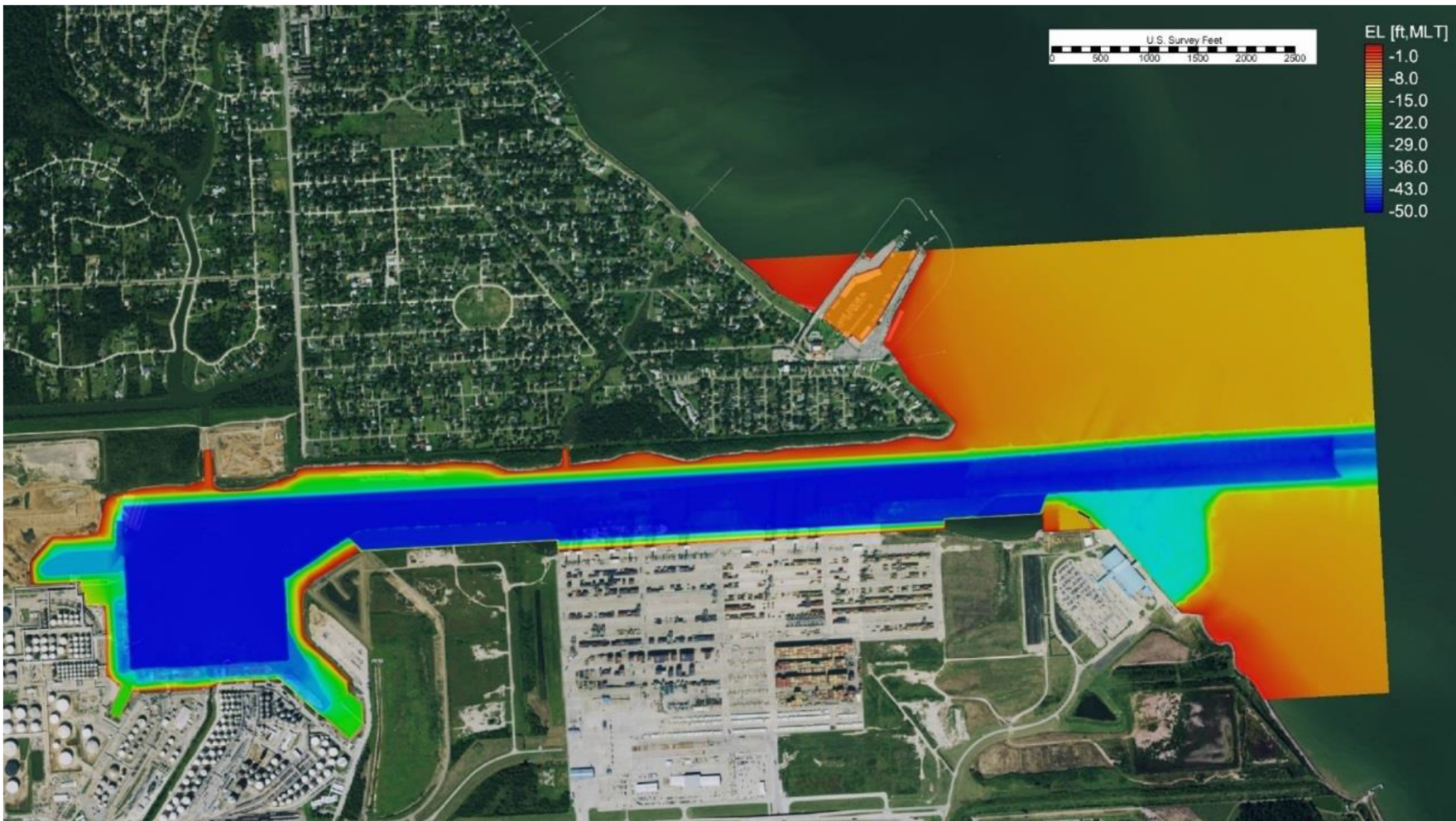
5 SECTION
 N.T.S.



Wharf 1 Interface with Future Berths



Passing Vessel, Mooring, and Berthing Analysis



Special Considerations

- Possible advanced dredging package
- Wharf 1 interface with future wharves
- Future dredge depths
- Passing Vessel, Mooring, and Berthing Analysis
- Electrical - Crane and Shore Power
- Stevedore Support Building
- Coordination with ongoing construction projects

Additional Notes

- Project Management Software - Projectmates
- Plan to award in June 2023



Procurement Services

Email: procurement@porthouston.com

Phone: (713) 670- 2464

New BuySpeed URL:

<https://buyspeed.porthouston.com>

QUESTIONS?

PORT HOUSTON



PORT HOUSTON™