

Pre-Proposal Meeting:

RFQ-2653 DESIGN OF (1) ANNUAL PAVEMENT REPLACEMENT AT BARBOURS CUT AND BAYPORT CONTAINER TERMINALS, (2) ANNUAL CONCRETE REPLACEMENT, AND (3) PAVEMENT, DRAINAGE IMPROVEMENT AND DUST CONTROL WORK AT TURNING BASIN TERMINAL

March 7, 2023

3:00 p.m.

PORT HOUSTON



PORT HOUSTON

AGENDA

1. Pre-Proposal Meeting House Rules
2. Introductions
3. Business Equity
4. Procurement Services
5. Selection Criteria
6. Project Scope
7. Questions



PRE-PROPOSAL MEETING HOUSE RULES

- Attendees will begin the meeting in listen-only mode.
- There will be a Q&A session at the end of today's presentation.
- If you have any questions during the presentation, you may submit your Questions through the WebEx Q&A feature and they will be addressed at the end of the presentation.
- This presentation recording will be posted on the BuySpeed homepage under "Pre-Bid/Proposal Conference Information."



PHA Personnel:

Roger Hoh – Director, Project Construction Management

Barbara Smith – Project Manager

Yvette Camel-Smith – Director, Procurement

Tanika Chukwumerije – Manager Contracts, Procurement

Sommer Freeman – Contract Administrator, Procurement

Brenda Ruiz – Business Equity Manager



PORT COMMISSION



Ric Campo

Chairman of the Port Commission



Dean E. Corgey
Commissioner



Clyde Fitzgerald
Commissioner



Stephen H. DonCarlos
Commissioner



Roy D. Mease
Commissioner



Wendy Montoya Cloonan
Commissioner



Cheryl D. Creuzot
Commissioner



BUSINESS EQUITY



PORT HOUSTON

BUSINESS EQUITY S/MWBE INITIATIVE

- Business Equity Division provides resources to small, minority- and woman-owned businesses (S/MWBE) seeking to participate in Port Houston procurements and contracts.
- Port Houston promotes business opportunities for all sectors of the community and recognizes the importance of vendor and supplier diversity in its contracts.
- Port Houston has established an organizational 35% Small Business participation goal and a 30% Minority- and Woman Business Enterprise (MWBE) aspirational goal.



BUSINESS EQUITY

All dollars awarded and committed to enrolled S/MWBEs count towards Port Houston's S/MWBE goals regardless of whether the individual solicitation includes criteria for small, minority, woman-owned business participation.



PORT HOUSTON

BUSINESS EQUITY DEFINITIONS

Small Business Enterprise (SBE)

- Gross revenues or number of employees, averaged over the past three years does not exceed the size standards defined by SBA.
- The net worth of the owner must be less than \$1.32 million, excluding the owner's primary residence and assets of the business.

Minority Business Enterprise (MBE)

- At least 51% Owned by one or more Minority Individuals, or at least 51% of the equity is Owned by one or more Minority Individuals.
- Both the management and daily business operations are carried out and controlled by one or more of the Minority Individuals who own it.

Woman-Owned Business Enterprise (WBE)

- At least 51% Owned by one or more Women, or at least 51% of the equity is Owned by one or more Women
- Both the management and daily business operations are carried out and controlled by one or more of the Women who own it.



CERTIFYING PARTNERS

Small and M/WBEs must meet certain criteria and be certified with one of the following partner agencies

- City of Houston *
- Houston Minority Supplier Development Council
- METRO *
- National Minority Supplier Development Council & Affiliate:
- Small Business Administration 8(a) *
- South Central Texas Regional Certification Agency – SCTRC/ *
- Texas Comptroller of Public Accounts – HUB Certification
- Texas Department of Transportation – TxDOT *
- Women’s Business Enterprise Alliance
- Women’s Business Enterprise National Council & Affiliates – WBENC

* No fee to apply



Local Presence

- Harris
- Montgomery
- Waller
- Ft. Bend
- Brazoria
- Galveston
- Chambers
- Liberty



PORT HOUSTON S/MWBE ENROLLMENT DIRECTORY

How do I identify Port Houston enrolled small, minority- and woman-owned businesses (S/MWBE)?

Search for businesses in 2 easy steps:

1. Visit <https://porthouston.smwbe.com>

Under the section on the left labeled Small, Minority and Woman Owned Business

Directory and Online Application select the blue button labeled, "Find a S/MWBE Firm".

2. You will need to complete at least one of the fields in the popup window titled, Port Houston S/MWBE Enrollment Directory and Search.

www.porthouston.smwbe.com

<https://porthouston.smwbe.com/Default.asp?>

PORT HOUSTON
THE INTERNATIONAL PORT OF TEXAS™

OUR MAIN SITE [CONTACTS AND SUPPORT](#)

PORT HOUSTON BUSINESS EQUITY COMPLIANCE SYSTEM

Log In

SMALL, MINORITY AND WOMAN OWNED BUSINESS DIRECTORY AND ONLINE APPLICATION

Search for small, minority, and woman-owned businesses enrolled in Port Houston's Business Equity Programs, and/or apply to become an enrolled small, minority or woman-owned business.

[Find a SMWBE Firm](#)

OUTREACH & PROGRAM NOTICES

Business Networking Events

[Detailed Description](#)

[RSVP For An Event](#)

SYSTEM TRAINING



PORT HOUSTON™

BUSINESS EQUITY CONTRACT REQUIREMENTS

This project does not have any Business Equity requirements, but we highly encourage the use of small, minority- and woman-owned business when possible.



PROCUREMENT



PORT HOUSTON

PROCUREMENT

- No Contact Period – No communication between interested vendors and Port Houston staff during the active period.
 - Technical questions should be submitted via BuySpeed
 - Last day to submit questions: 7 days before due date (3/15/2023)
- Responses are due no later than 11 a.m. on 3/22/2023
- Proposals must be submitted electronically via email to: procurementproposals@porthouston.com
- Use forms in the package
- Anticipated award date: 5/23/2023



EVALUATION CRITERIA

Port Houston will select the **most highly qualified** provider of the services based on **demonstrated competence and qualifications**. The following criteria and relative weights will be considered by Port Houston in evaluating each Response:

Evaluation Criteria	Relative Weight (%)
Respondent's Reputation and Quality of Services	20
Personnel Qualifications and Experience	40
Performance Plan and Other Benefits	35
Overall Compliance with Port Houston Policies	5



SCOPE OF WORK OVERVIEW



PORT HOUSTON

**DESIGN OF (1)
ANNUAL PAVEMENT
REPLACEMENT AT
BARBOURS CUT AND
BAYPORT CONTAINER
TERMINALS, (2)
ANNUAL CONCRETE
REPLACEMENT, AND
(3) PAVEMENT,
DRAINAGE
IMPROVEMENT AND
DUST CONTROL WORK
AT TURNING BASIN
TERMINAL, PHASE 1;
2023 AND PHASE
2;2024**

Project Description:

- Port Houston is seeking a professional engineering service to perform the following:
 - Assist in planning and design for the annual pavement replacement at BCT and BPT Container Terminals, the annual concrete replacement at TBT and annual pavement repair, drainage improvement and dust control work at TBT
 - Selected firm or team shall have expertise in pavement repairs, including repairs of roller compacted concrete, and drainage improvement.

**DESIGN OF (1)
ANNUAL PAVEMENT
REPLACEMENT AT
BARBOURS CUT AND
BAYPORT CONTAINER
TERMINALS, (2)
ANNUAL CONCRETE
REPLACEMENT, AND
(3) PAVEMENT,
DRAINAGE
IMPROVEMENT AND
DUST CONTROL WORK
AT TURNING BASIN
TERMINAL, PHASE 1;
2023 AND PHASE
2;2024**

Project Description:

- Port Houston is seeking a professional engineering service to perform the following:
 - Additional services may include geotechnical services, surveying, and GIS services
 - Prepare risk registries for each design project.
 - Construction Support Services

General Scope of Services

Background and Schedule:

- A. The project for *Pavement replacement at Barbours Cut and Bayport Container Terminals – 2024* scope of work includes some asphaltic and mostly concrete pavement repairs. This project is scheduled to go on BuySpeed October 2023, and it is scheduled to be awarded in January 2024.

- B. The project for *Concrete pavement replacement at Turning Basin Terminal- 2024* scope of work includes concrete pavement repairs. This project is scheduled to go on BuySpeed October 2023, and it is scheduled to be awarded in January 2024.

General Scope of Services

Background and Schedule:

C. This project for *Pavement repairs, drainage improvement, and dust control work at Turning Basin Terminal* scope of work includes the pavement, drainage improvement and dust control work. This project, phase 1, is scheduled to go on BuySpeed August 2023, and it is scheduled to be awarded in October 2023. The awarded firm will be responsible for designing this project first. Phase 2 is scheduled to go on BuySpeed March 2024, and it is scheduled to be awarded in May 2024.

Barbours Cut Terminal (2022)



Hog Island

Spilman Island

Dock 8

C7

C6

C5

C4

C3

C2

C1

Fireboat Dock

Barbours Cut Terminal

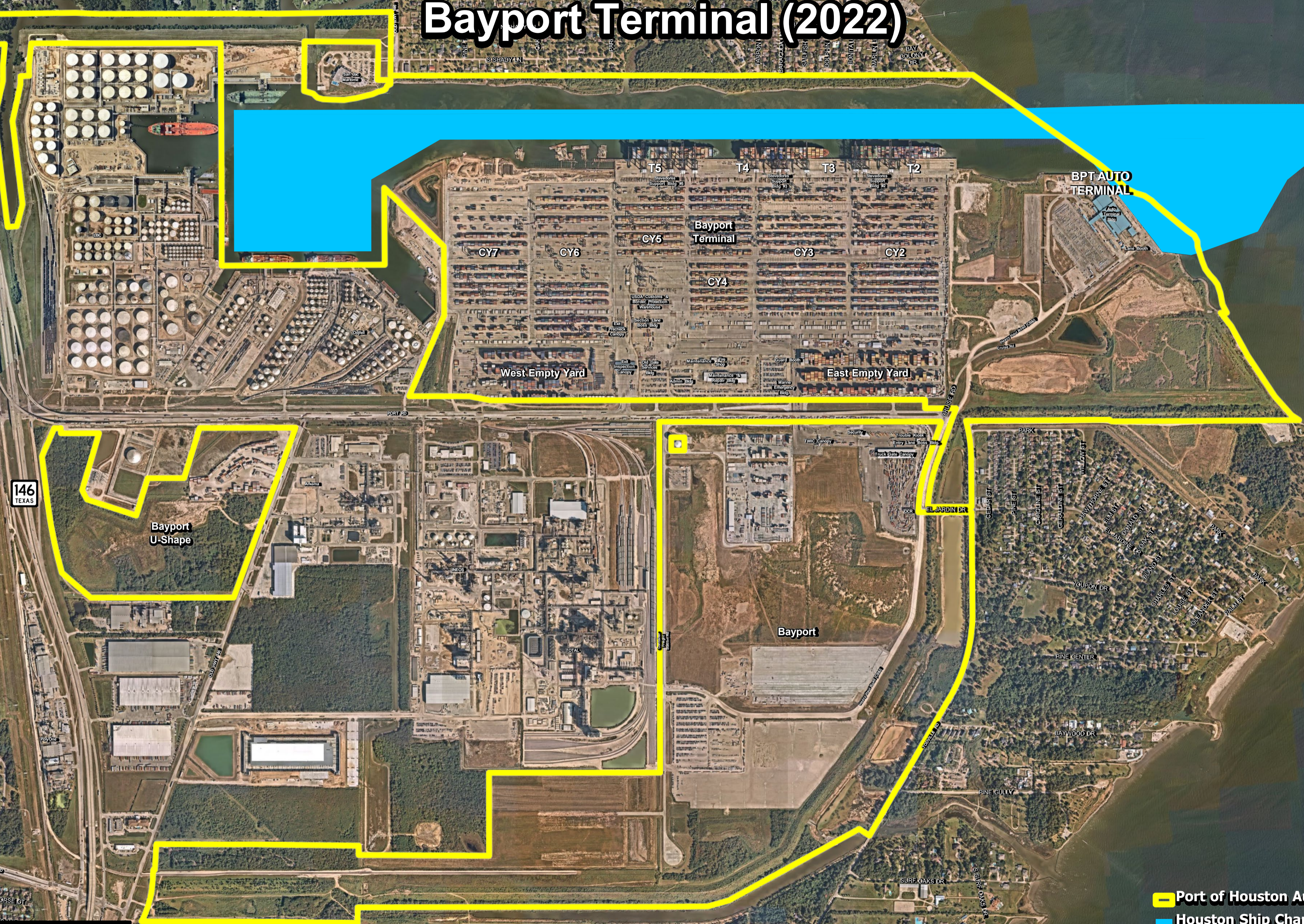
-  Port of Houston Authority Property
-  Dredge Placement Areas
-  Houston Ship Channel

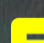




Aerial Date: October 2022



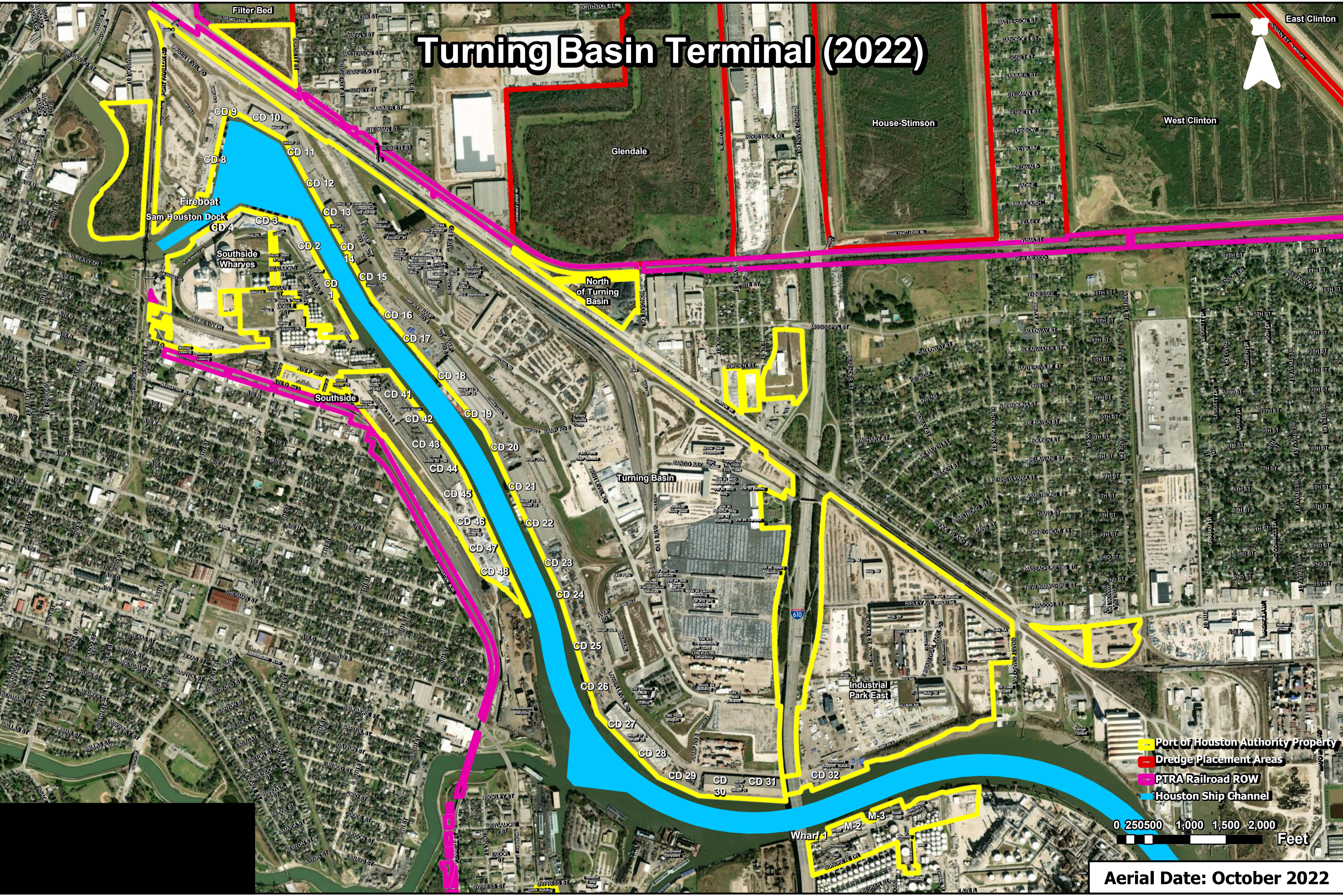
Bayport Terminal (2022)



 Port of Houston Authority Property
 Houston Ship Channel
0 250 500 1,000 1,500 2,000
 Feet

Aerial Date: October 2022

Turning Basin Terminal (2022)



- Port of Houston Authority Property
- Dredge Placement Areas
- PTRA Railroad ROW
- Houston Ship Channel

0 250 500 1,000 1,500 2,000 Feet

Aerial Date: October 2022

Annual Pavement, Drainage and Dust Control at Turning Basin – 2023 and 2024



Procurement Services

Email: procurement@porthouston.com

Phone: (713) 670- 2464

QUESTIONS?

PORT HOUSTON



PORT HOUSTON