



PORT HOUSTON™

PRE-PROPOSAL CONFERENCE:

**RFQ-2066 PLANNING SUPPORT FOR THE DEVELOPMENT OF PORT HOUSTON
FACILITIES AT BCT AND BPT**

JANUARY 5, 2022, 10:00 A.M. (CST)





- Pre-Proposal Conference House Rules
- Business Equity
- Procurement Services
- Scope of Services
- Q/A



- Attendees will begin the meeting in listen-only mode.
- There will be a Q&A session at the end of today's presentation.
- If you have any questions during the presentation, you may submit your Questions through the WebEx chat feature and they will be addressed at the end of the presentation.
- This presentation will be posted on the BuySpeed homepage under "Pre-Bid/Proposal Conference Information."



PORT HOUSTON™

Business Equity





Port Houston promotes business opportunities for all sectors of the community and recognizes the importance of vendor and supplier diversity in its contracts.

Port Houston has established an organizational 35% Small Business participation goal and a 30% Minority-and Woman Business Enterprise (MWBE) aspirational goal.





PORT HOUSTON

All dollars awarded and committed to enrolled S/MWBEs count towards Port Houston's S/MWBE goals regardless of whether the individual solicitation includes criteria for small, minority, woman-owned business participation.





Small Business Enterprise (SBE) means a firm whose gross revenues or number of employees, averaged over the past three years, inclusive of any affiliates as defined by 13 CFR § 121.103, does not exceed the size standards defined in Section 3 of the Federal Small Business Act and applicable Small Business Administration regulations related to the size standards found in 12 CFR §121. The net worth of the owner must be less than \$1.32 million, excluding the owner's primary residence and assets of the business.

Minority Business Enterprise (MBE) means a Business that is at least 51% Owned by one or more Minority Persons, or for which at least 51% of the equity is Owned by one or more Minority Persons, and both the management and daily business operations are carried out and controlled by one or more of the Minority Persons who own it.

Woman Business Enterprise (WBE) means a Business that is at least 51% Owned by one or more females, or for which at least 51% of the equity is owned by one or more females, and both the management and daily business operations are carried out and controlled by one or more of the females who own it.

MWBE and SBE Policies: The Port Commission, at its April 27, 2021, meeting, approved the NEW Minority-Amended and Restated Small Business Development Policy.



Small and MWBEs must meet certain criteria and be certified with one of the following partner agencies:

- *City of Houston (SBE, MBE, WBE)
- Houston Minority Supplier Development Council (MBE)
- *METRO (SBE)
- *SBA 8(a) (SDB)
- *State of Texas HUB Certification (HUB)
- South Texas Central Regional Certification Agency (SBE, MBE, WBE)
- *Texas Department of Transportation (SBE)
- Women's Business Enterprise Alliance (WBE)

*No fee to apply



Contractor is encouraged to and agrees it will endeavor to:

- Placing qualified small and minority businesses and women's business enterprises on solicitation lists;
- Assuring that small and minority businesses, and women's business enterprises are solicited whenever they are potential sources;
- Dividing total requirements, when economically feasible, into smaller tasks or quantities to permit maximum participation by small and minority businesses, and women's business enterprises;
- Establishing delivery schedules, where the requirement permits, which encourage participation by small and minority businesses, and women's business enterprises;
- Using the services and assistance, as appropriate, of such organizations as the Small Business Administration and the Minority Business Development Agency of the Department of Commerce.



PORT HOUSTON™

Procurement Services

Dean Ainuddin,
Manager, Contracts



- No Contact Period – No communication between interested vendors and Port Houston staff during the active period.
 - Technical questions should be submitted via BuySpeed
 - Last day to submit questions: 7 days before due date (1/11/2022)
- Responses are due no later than 11 a.m. on 1/19/2022
- Proposals must be submitted electronically via email to: procurementproposals@porthouston.com
- Use forms in the package
- Anticipated Port Commission Approval date: March 2022



Evaluation Criteria

Port Houston will select the most highly qualified provider(s) of the services requested on the basis of demonstrated competence and qualifications. The criteria and relative weights that will be considered by Port Houston in evaluating each Response are as follows:

- Respondent's Reputation and Quality of Services (15%)
- Personnel, Qualifications, and Experience (40%)
- Performance Plan and Other Benefits (40%)
- Overall Compliance with PHA Policies (5%)

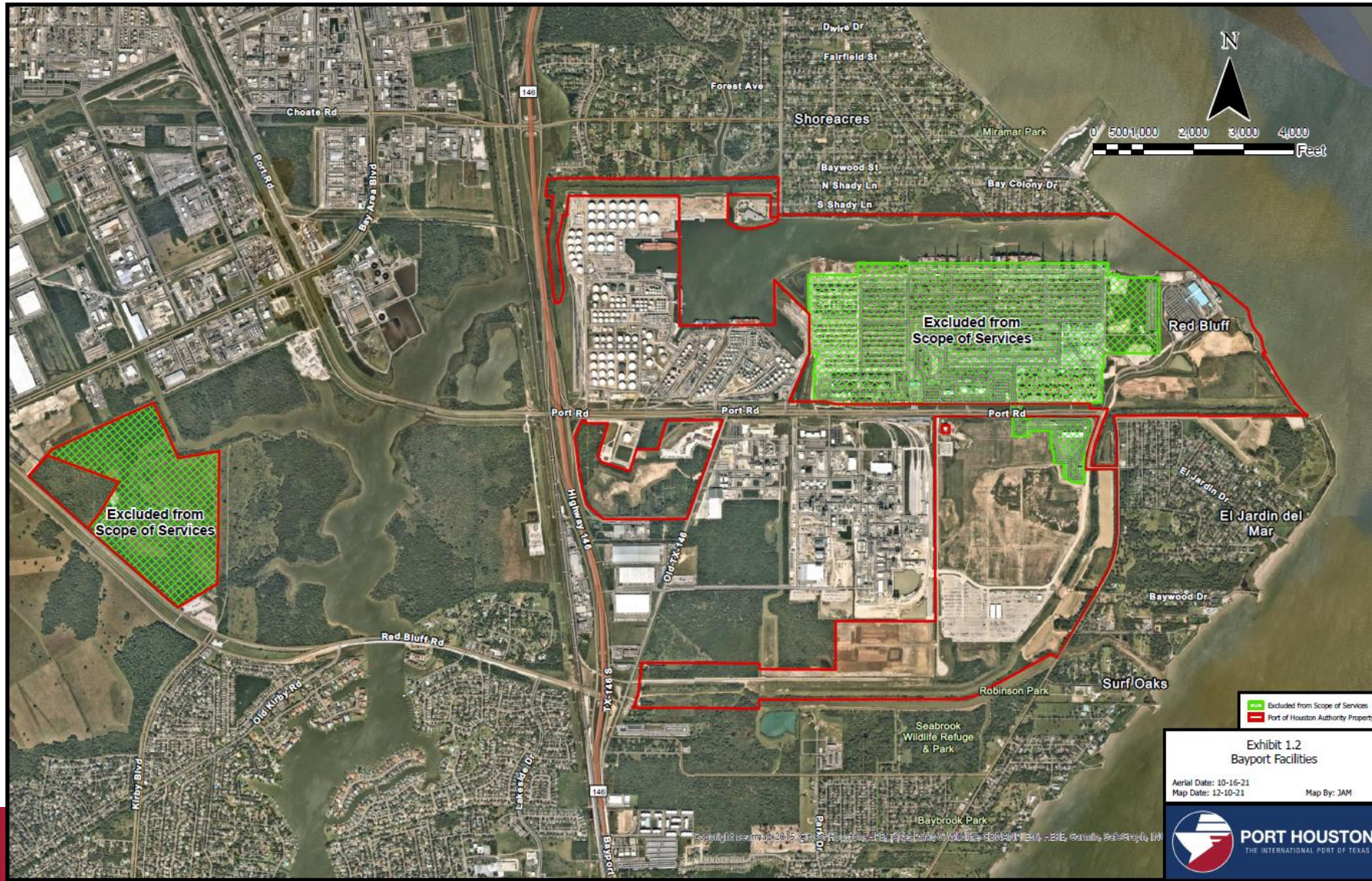


PORT HOUSTON™

Scope of Services

Rohit Saxena
Director, Facility Planning







- Development and phasing of full build-out/rehabilitation of both terminals (wharves, yards, gates, buildings, other ancillary services, terminal handling equipment, utility requirements, etc.)
- Development of properties outside terminal footprints
- Overall Traffic Flow Analysis
- Capacity Analysis and Interactive Terminal Simulation Modeling
- Future of trade lanes, cargo trends, vessels, logistics industry practices
- Capital and Operating Cost Analysis
- Other as needed support activities



QUESTIONS?



PORT HOUSTON™

THANK YOU

