



PORT HOUSTON™

## PRE-PROPOSAL CONFERENCE:

**RFQ-2036 PROFESSIONAL ENGINEERING CONSULTING SERVICES FOR ROUTINE FACILITY INSPECTION AND CONDITION ASSESSMENT PROGRAM (FICAP) MARINE STRUCTURES 2022**

**RFQ-2018 2022 ELECTRICAL AND COMMUNICATIONS FACILITY INSPECTION AND CONDITION ASSESSMENT PROGRAM (FICAP) AT BARBOURS CUT TERMINAL**

**RFQ-2037 PROFESSIONAL ENGINEERING CONSULTING SERVICES FOR 2022 CORROSION FACILITY INSPECTION AND CONDITION ASSESSMENT PROGRAM (FICAP) ON MARINE ASSETS AT BAYPORT CONTAINER TERMINAL**

October 28, 2021

10:00 a.m. (CST)



- Pre-Proposal Conference House Rules
- Port Commission
- Business Equity
- Procurement Services
- Scope of Services
- Q/A



- Attendees will begin the meeting in listen-only mode.
- There will be a Q&A session at the end of today's presentation.
- If you have any questions during the presentation, you may submit your Questions through the WebEx chat feature and they will be addressed at the end of the presentation.
- This presentation will be posted on the BuySpeed homepage under "Pre-Bid/Proposal Conference Information."



Ric Campo  
Chairman



Dean E. Corgey  
Commissioner



Clyde Fitzgerald  
Commissioner



Stephen H. DonCarlos  
Commissioner



Roy D. Mease  
Commissioner



Wendy Montoya Cloonan  
Commissioner



Cheryl D. Creuzot  
Commissioner



PORT HOUSTON™

# Business Equity

Gilda Ramirez  
Sr. Director, Business Equity



---

**Port Houston** promotes business opportunities for all sectors of the community and recognizes the importance of vendor and supplier diversity in its contracts.

**Port Houston** has established an organizational 35% Small Business participation goal and a 30% Minority-and Woman Business Enterprise (MWBE) aspirational goal.

---





---

All dollars awarded and committed to enrolled S/MWBEs count towards Port Houston's S/MWBE goals regardless of whether the individual solicitation includes criteria for small, minority, woman-owned business participation.

---





**Small Business Enterprise (SBE)** means a firm whose gross revenues or number of employees, averaged over the past three years, inclusive of any affiliates as defined by 13 CFR § 121.103, does not exceed the size standards defined in Section 3 of the Federal Small Business Act and applicable Small Business Administration regulations related to the size standards found in 12 CFR §121. The net worth of the owner must be less than \$1.32 million, excluding the owner's primary residence and assets of the business.

**Minority Business Enterprise (MBE)** means a Business that is at least 51% Owned by one or more Minority Persons, or for which at least 51% of the equity is Owned by one or more Minority Persons, and both the management and daily business operations are carried out and controlled by one or more of the Minority Persons who own it.

**Woman Business Enterprise (WBE)** means a Business that is at least 51% Owned by one or more females, or for which at least 51% of the equity is owned by one or more females, and both the management and daily business operations are carried out and controlled by one or more of the females who own it.

**MWBE and SBE Policies:** The Port Commission, at its April 27, 2021, meeting, approved the NEW Minority-Amended and Restated Small Business Development Policy.





Small and MWBEs must meet certain criteria and be certified with one of the following partner agencies:

- \*City of Houston (SBE, MBE, WBE)
- Houston Minority Supplier Development Council (MBE)
- \*METRO (SBE)
- \*SBA 8(a) (SDB)
- \*State of Texas HUB Certification (HUB)
- South Texas Central Regional Certification Agency (SBE, MBE, WBE)
- \*Texas Department of Transportation (SBE)
- Women's Business Enterprise Alliance (WBE)

\*No fee to apply



**Contractor is encouraged to and agrees it will endeavor to:**

- Placing qualified small and minority businesses and women's business enterprises on solicitation lists;
- Assuring that small and minority businesses, and women's business enterprises are solicited whenever they are potential sources;
- Dividing total requirements, when economically feasible, into smaller tasks or quantities to permit maximum participation by small and minority businesses, and women's business enterprises;
- Establishing delivery schedules, where the requirement permits, which encourage participation by small and minority businesses, and women's business enterprises;
- Using the services and assistance, as appropriate, of such organizations as the Small Business Administration and the Minority Business Development Agency of the Department of Commerce.



PORT HOUSTON™

# Procurement Services

| Tanika Chukwumerije  
and Dean Ainuddin  
Manager, Contracts



- No Contact Period – No communication between interested vendors and Port Houston staff during the active period.
  - Technical questions should be submitted via BuySpeed
  - Last day to submit questions: 7 days before due date (11/10/2021)
- Responses are due no later than 11 a.m. on 11/17/2021
- Proposals must be submitted electronically via email to: [procurementproposals@porthouston.com](mailto:procurementproposals@porthouston.com)
- Use forms in the package
- Anticipated award date: 1/25/2022



## **Evaluation Criteria**

Port Houston will select the most highly qualified provider(s) of the services requested on the basis of demonstrated competence and qualifications. The criteria and relative weights that will be considered by Port Houston in evaluating each Response are as follows:

- Respondent's Reputation and Quality of Services (25%)
- Personnel, Qualifications, and Experience (35%)
- Performance Plan and Other Benefits (35%)
- Overall Compliance with PHA Policies (5%)



- Three different FICAP projects, three different submittals, three different envelopes
- Respondents may propose on one, two, or all three projects. No limitations
- Each submittal must be in a separate envelope
- Respondents can be awarded more than one project if deemed most highly qualified for a particular RFQ.

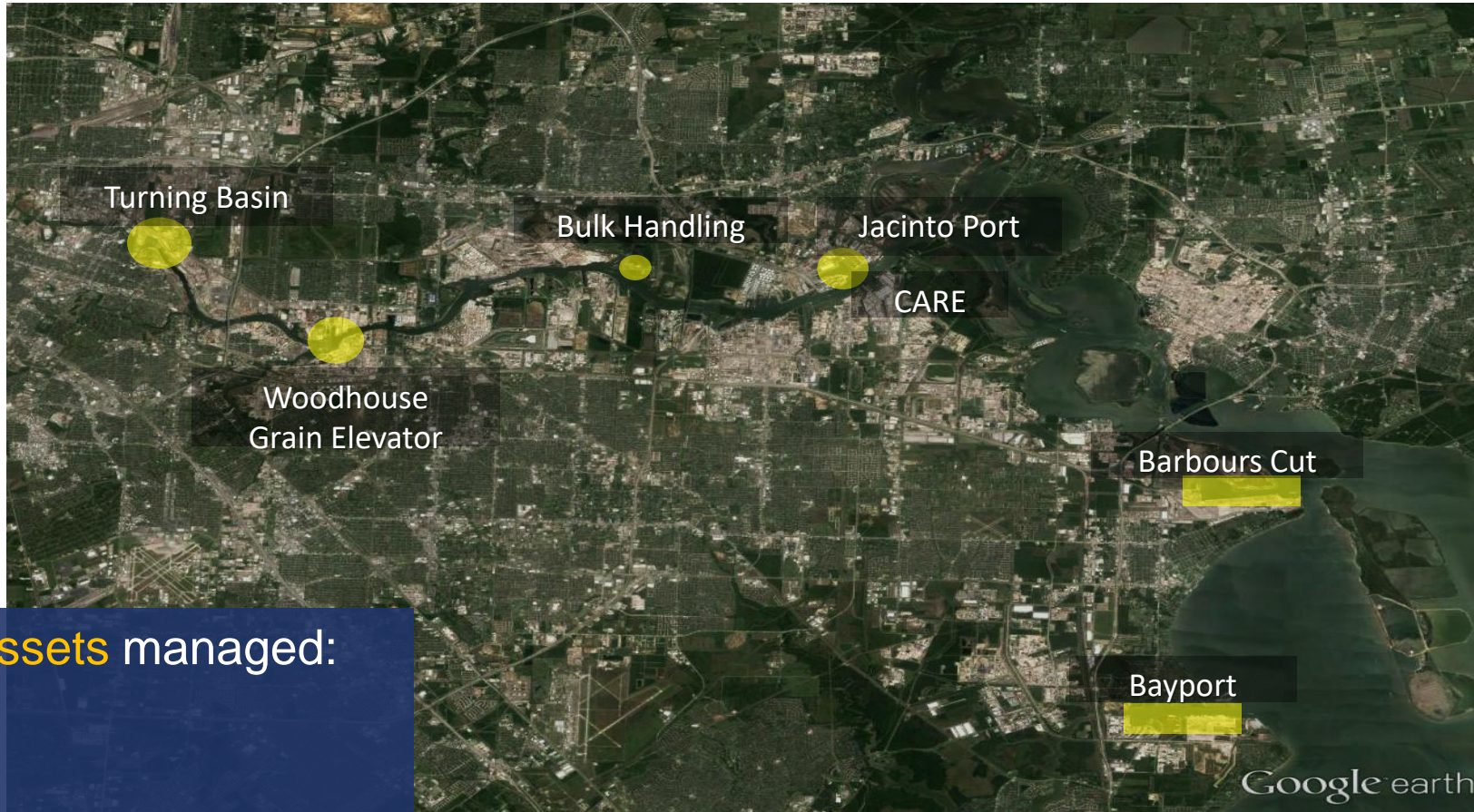


PORT HOUSTON™

# Scope of Services

RFQ - 2036 Professional Engineering Consulting Services for Routine Facility Inspection and Condition Assessment Program (FICAP) Marine Structures 2022

Eddy Kharrazi, P.E. | Project Manager | Project & Construction Management (PCM)



### Variety of **marine assets** managed:

- Cargo wharves
- Barge landing areas
- Small boat docks
- Bulkhead
- Riprap shoreline
- Vehicle barge





**PORT HOUSTON**  
Maritime Facilities Inspection and  
Condition Assessment Manual



Issued by:  
Port of Houston Authority  
111 East Loop North  
Houston, Texas  
77029-4326

Rev. 1  
April 2017

The **FICAP** inspection and condition assessment is typically limited to a **visual inspection** approach, and **does not** involve other in-depth inspection methods, such as material sampling and coring, or non-destructive evaluation techniques including impact echo, impulse response, ultrasonic techniques, ground penetrating radar, radiography, infrared thermography, electrical resistivity, half-cell potentials, corrosion rate measurements, etc.



Facilities  
Inspection and  
Condition  
Assessment  
Program

## Why FICAP?

- Define condition of PHA asset at a point in time
- Identify conditions that may compromise operations due to complete or partial structural failure
- Identify conditions that may lead to property or environmental damage
- Evaluate functional adequacy of an asset
- Assess conditions that require maintenance, repair, or replacement
- Program work in terms of allocating funds and assigning priorities



Facilities  
Inspection and  
Condition  
Assessment  
Program

## FICAP Objectives

- Provide **uniform guidance for inspection teams** to carry out baseline and routine (structural) visual inspections and conditions assessments of maritime assets owned by PHA
- Provide inspection and assessment information necessary for PHA management to **determine timing** of some **preventative and remedial actions** required to maintain desired level of service



- The scope of this round of routine FICAP program (2022) includes **above water inspection** and the associated condition assessment of the structural and non-structural components of PHA's marine assets.
- The underwater inspections **will not** be conducted in this round of routine FICAP (2022).

**Routine:** Regularly-scheduled inspection to define asset condition at a point in time.

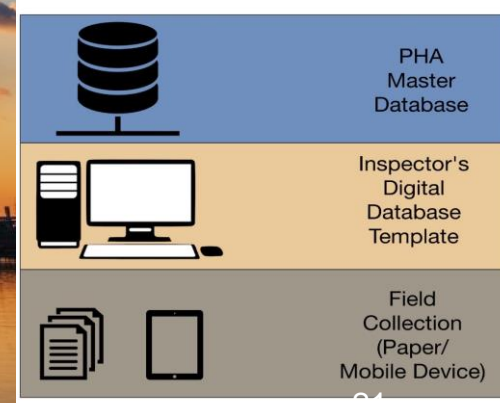
### Included in Scope:

- Cargo wharves
- T-docks
- Boat and barge docks
- Bulkheads
- Protected and unprotected shoreline
- Rail loading platforms
- Bridges owned and maintained by PHA



1. To provide marine asset inspection services for **above water inspections**, and any other inspection required activities, as outlined by FICAP, including but not limited to:
  - a) planning the inspection,
  - b) organizing project execution plan,
  - c) managing inspection activity,
  - d) inspecting, taking pictures,
  - e) collecting inspection data,
  - f) performing QA/QC of baseline drawings for the assets
  - g) performing QA/QC of the data,
  - h) recording the collected data in FICAP database,
  - i) assessing asset condition,
  - j) preparing report
2. To **assess and evaluate** the condition of and to **prepare** condition assessment **reports** for the PHA assets using data and information collected through the inspection by following the FICAP manual.

### Digital Inspection Database Hierarchy





## Respondent(s) or their subcontractors must have experience in:

- ❑ Structural inspection (with experience exceeding 10 years) for above water inspections, and any other inspection required activities as outlined by FICAP, including but not limited to: **planning the inspection, organizing project execution plan, managing inspection activity, inspecting, taking pictures, collecting inspection data, performing QA/QC of the data, recording the collected data in FICAP database, preparing reports, assessing asset condition**, etc.
- ❑ Working knowledge and experience with **AASHTO Manual for Bridge Element Inspection**.
- ❑ Firm should have proven experience and proficient staff in utilizing **Esri GIS ArcGIS** software technologies and Esri GIS Geodatabase formats for potential GIS related tasks.

The selected Respondents' team must take and pass the FICAP training provided by PHA



PORT HOUSTON™

# Scope of Services

RFQ-2018 2022 ELECTRICAL AND COMMUNICATIONS FACILITY  
INSPECTION AND CONDITION ASSESSMENT PROGRAM (FICAP) AT BARBOURS CUT  
TERMINAL

Derek L. Garrett | Project Manager | Project & Construction Management (PCM)



1. To provide inspection services for electrical distribution and communications assets at the Barbour's Cut Terminal. As outlined by FICAP, including but not limited to:
  - a) planning the inspection,
  - b) organizing project execution plan,
  - c) managing inspection activity,
  - d) inspecting, taking pictures,
  - e) collecting inspection data,
  - f) performing QA/QC of baseline drawings for the assets
  - g) performing QA/QC of the data,
  - h) recording the collected data in FICAP database,
  - i) assessing asset condition,
  - j) preparing report
2. To **assess and evaluate** the condition of and to **prepare** condition assessment **reports** for the PHA assets using data and information collected through the inspection by following the FICAP Electrical & Communications manual.





3. Validate existing single line diagrams and plan view drawings for electrical distribution and communication assets and updated CAD drawings on an as needed basis.

4. Calculate the asset condition rating (ACR) for the inspected asset classes broken down by hierarchy in FICAP manual.



5. Using ETAP software and the existing ETAP Barbours Cut electrical distribution model, run arc flash studies to generate updated arc flash labels for all electrical equipment in the terminal.

6. All new information such as inspection reports, single line diagrams, and plan view drawings will be entered in the FICAP database the Port Houston Asset Registry Database and GIS Geodatabase.



PORT HOUSTON™

# Scope of Services

RFQ-2037 PROFESSIONAL ENGINEERING CONSULTING SERVICES FOR 2022  
CORROSION FACILITY INSPECTION AND CONDITION ASSESSMENT PROGRAM (FICAP) ON  
MARINE ASSETS AT BAYPORT CONTAINER TERMINAL

Derek L. Garrett | Project Manager | Project & Construction Management (PCM)



1. To provide inspection services for electrical distribution and communications assets at the Barbours Cut Terminal. As outlined by FICAP, including but not limited to:
  - a) planning the inspection,
  - b) organizing project execution plan,
  - c) managing inspection activity,
  - d) inspecting, taking pictures,
  - e) collecting inspection data,
  - f) performing QA/QC of baseline drawings for the assets
  - g) performing QA/QC of the data,
  - h) recording the collected data in FICAP database,
  - i) assessing asset condition,
  - j) preparing report
2. To **assess and evaluate** the condition of and to **prepare** condition assessment **reports** for the PHA assets using data and information collected through the inspection by following the FICAP Corrosion manual.



3. Using the FICAP Corrosion Manual as a guide consultant will inspect and develop the following ratings

- a) Corrosion Protection Rating (CP)
- b) Base Metal Rating (BM)
- c) Asset Condition Rating (ACR)

4. All new information such as inspection reports, single line diagrams, and plan view drawings will be entered in the FICAP database the Port Houston Asset Registry Database and GIS Geodatabase.



# QUESTIONS?



PORT HOUSTON™



# THANK YOU

