



PORT HOUSTON
THE INTERNATIONAL PORT OF TEXAS™

RFQ-1261 Professional Services for Restroom Restoration at Turning Basin Terminal
Jessica Shambra, PE | Project Manager | Project & Construction Management (PCM)



RFQ-1261



1. Introductions
2. Procurement
3. Selection Criteria
4. Scope of Services
5. Site Layout/Drawings
6. Questions

Note: Please sign attendance sheet. No site visit is scheduled.

Port Commission



PORT HOUSTON
THE INTERNATIONAL PORT OF TEXAS™



Ric Campo
Chairman



Dean E. Corgey



Clyde Fitzgerald



Theldon R. Branch, III



Stephen H. DonCarlos



Roy D. Mease



**Wendolynn "Wendy"
Montoya Cloonan**

RFQ-1261



PHA Personnel:

Roger Hoh – Director of Project & Construction Management

Don Smith – Manager of Engineering Design & Planning

Ross Talbot – Construction Projects Delivery Manager

Jessica Shambra – Project Manager

Randy Stiefel – Director of General Cargo Facilities

Yvette Camel-Smith – Director of Procurement

RFQ-1261



Procurement:

- Request for Qualifications (RFQ) due **Wednesday, September 18, 2019 no later than 11:00 A.M.**
- Eight (8) hard copies packaged in one sealed envelope
- Facsimile copies are not acceptable
- All responses to the RFQ will be dated and the time received recorded upon receipt. PHA will not be responsible for late or incomplete responses due to mistakes or delays of the Respondent or carrier used by the Respondent or weather delays. A postmark is not sufficient. **LATE SUBMITTALS WILL NOT BE EVALUATED.**

RFQ-1261 Selection Criteria



- Most Highly Qualified Provider
- Using Criteria and Relative Weight

CRITERIA	RELATIVE WEIGHT
A. RESPONDENT'S REPUTATION AND QUALITY OF SERVICES	20%
B. PERSONNEL QUALIFICATIONS AND EXPERIENCE	40%
C. PERFORMANCE PLAN AND OTHER BENEFITS	35%
D. OVERALL COMPLIANCE WITH PHA POLICIES	5%

100%

RFQ-1261 Scope of Services



PORT HOUSTON
THE INTERNATIONAL PORT OF TEXAS

- Assess existing foundations and utility hookups, including, but not limited to, electrical, water, and sanitary sewer.
- Review and incorporate any existing reports as well as topographical, drainage, and utility systems information and provide alternatives and a recommended solution for final design.
- Assist in selection of materials and precast industrial restroom buildings, develop performance specs, and complete detailed design necessary for all planned improvements.
- Prepare interim and final construction cost estimates.
- Provide construction documents, proposal and construction phase services.

RFQ-1261

Restroom Locations at Turning Basin



RFQ-1261 Restroom Locations at Turning Basin



- City Dock 8; 1 restroom replacement
- Shed 10; 1 restroom replacement
- Shed 11; 1 restroom replacement
- Shed 18/19; 2 restroom replacements
- Shed 21/22; 2 restroom replacements
- Shed 27/28; 2 restroom replacements
- Shed 30/31; 2 restroom replacements
- City Dock 32; 1 building rehabilitation (restroom, clerk's office, break room, and exterior)

RFQ-1261 City Dock 8



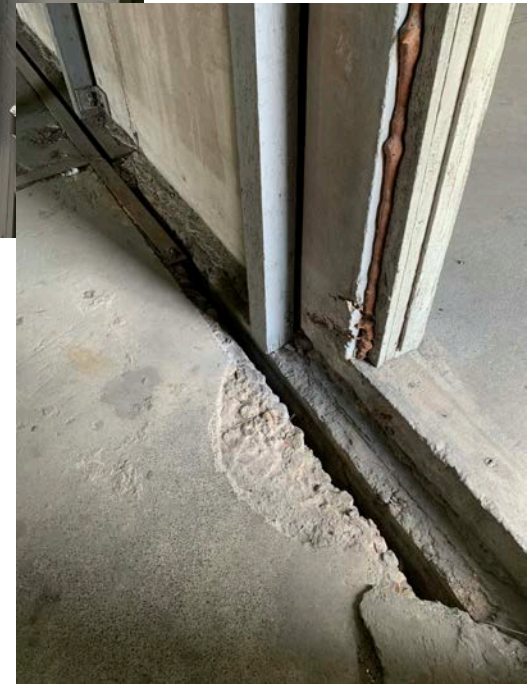
PORT HOUSTON
THE INTERNATIONAL PORT OF TEXAS



RFQ-1261 Transit Shed 11



PORT HOUSTON
THE INTERNATIONAL PORT OF TEXAS



RFQ-1261 Transit Shed Restroom



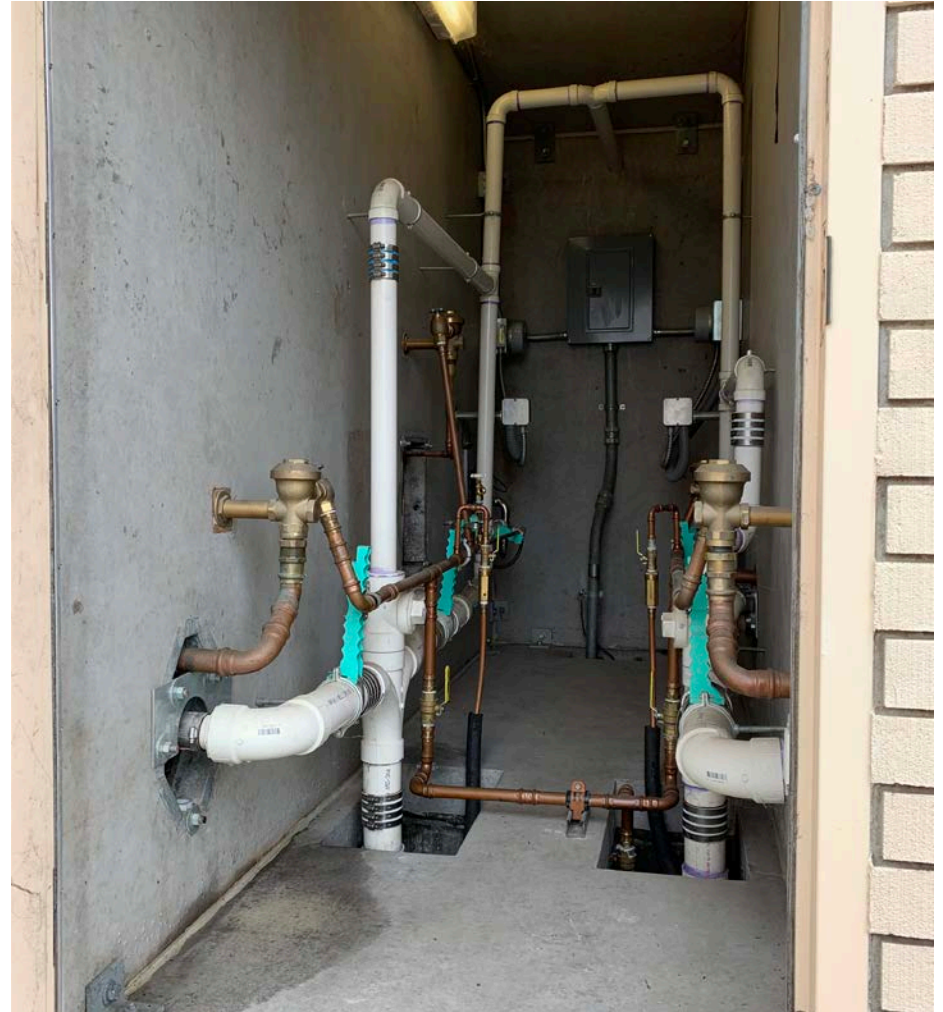
PORT HOUSTON
THE INTERNATIONAL PORT OF TEXAS



RFQ-1261 CD 16/17



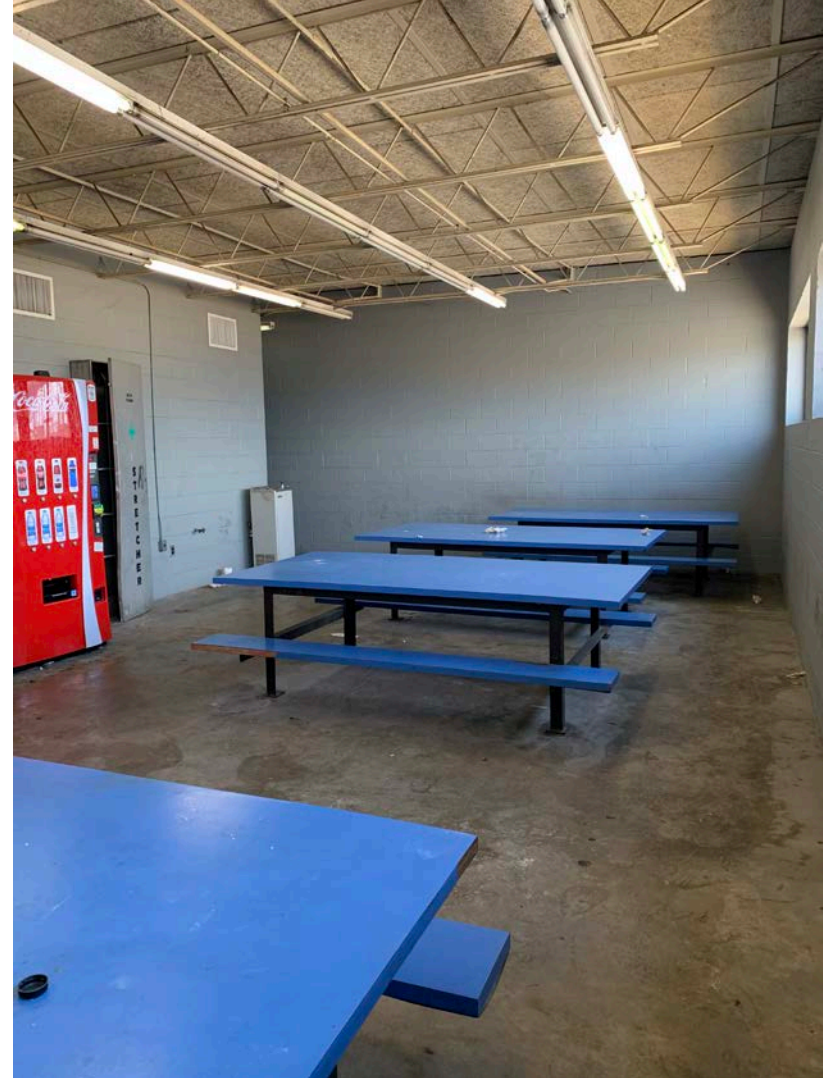
PORT HOUSTON
THE INTERNATIONAL PORT OF TEXAS™



RFQ-1261 City Dock 32



PORT HOUSTON
THE INTERNATIONAL PORT OF TEXAS





PORT HOUSTON
THE INTERNATIONAL PORT OF TEXAS

THANK YOU

Jessica Shambra, PE

Project Manager
Port Houston

Questions?

713.670.2527

jshambra@porthouston.com

www.PortHouston.com

111 East Loop North
Houston, TX 77029