

CSP-3178 – HOUSTON SHIP CHANNEL EXPANSION IMPROVEMENT PROJECT (HSC ECIP) PROJECT 11: BAYPORT CHANNEL LBC ATON RELOCATION

Pre-Proposal Meeting
April 17, 2024
1:00 p.m.

PORT HOUSTON



PORT HOUSTON

AGENDA

1. Pre-Proposal Meeting House Rules
2. Introductions
3. Business Equity
4. Procurement Services
5. Evaluation Criteria
6. Project Scope
7. Questions



PRE-PROPOSAL MEETING HOUSE RULES

- Attendees will begin the meeting in listen-only mode.
- There will be a Q&A session at the end of today's presentation.
- This presentation recording will be posted on BuySpeed homepage under "Pre-Bid/Proposal Conference Information."



PHA PERSONNEL

- Lori Brownell, P.E., BC.NE, F.ASCE – Director, Channel Infrastructure
- Jose Tapia – Project Manager I
- Lindsay Dalton – Project Manager II
- Yvette Camel-Smith – Director, Procurement
- Dean Ainuddin – Manager Contracts, Procurement
- Nicole Jones – Contract Administrator, Procurement
- Dr. Sabeeta Bidasie-Singh – Director, Business Equity
- Eduardo Mejia – Business Equity Compliance and Reporting Manager

Non PHA Personnel:

- Scott Marr – Project Manager
- Percy James – Task Leader
- David Broyles – EOR
- Patrick McKinney – LBC POC



PORT COMMISSION



Ric Campo
Chairman of the Port Commission



Dean E. Corgey
Commissioner



Clyde Fitzgerald
Commissioner



Stephen H. DonCarlos
Commissioner



Wendy Montoya Cloonan
Commissioner



Alan Robb
Commissioner



Thomas Jones, Jr.
Commissioner



BUSINESS EQUITY



PORT HOUSTON

BUSINESS EQUITY S/MWBE INITIATIVE

- Business Equity Division provides resources to small, minority- and woman-owned businesses (S/MWBE) seeking to participate in Port Houston procurements and contracts.
- Port Houston promotes business opportunities for all sectors of the community and recognizes the importance of vendor and supplier diversity in its contracts.
- Port Houston has established an organizational 35% Small Business participation goal and a 30% Minority- and Woman Business Enterprise (MWBE) aspirational goal.

35%

SBE participation
goal

30%

MWBE aspirational
goal



PORT HOUSTON

BUSINESS ENTERPRISE DEFINITIONS

Small Business Enterprise (SBE)

- Gross revenues or number of employees, averaged over the past three years does not exceed the size standards defined by SBA.
- The net worth of the owner must be less than \$1.32 million, excluding the owner's primary residence and assets of the business.

Minority Business Enterprise (MBE)

- At least 51% Owned by one or more Minority Individuals, or at least 51% of the equity is Owned by one or more Minority Individuals.
- Both the management and daily business operations are carried out and controlled by one or more of the Minority Individuals who own it.

Woman-Owned Business Enterprise (WBE)

- At least 51% Owned by one or more Women, or at least 51% of the equity is Owned by one or more Women
- Both the management and daily business operations are carried out and controlled by one or more of the Women who own it.



CERTIFYING PARTNERS

- City of Houston *
- Houston Minority Supplier Development Council
- METRO *
- National Minority Supplier Development Council & Affiliates
- Small Business Administration 8(a) *
- South Central Texas Regional Certification Agency – SCTRCA *
- Texas Comptroller of Public Accounts – HUB Certification
- Texas Department of Transportation – TxDOT *
- Women’s Business Enterprise Alliance
- Women’s Business Enterprise National Council & Affiliates – WBENC

* No fee to apply



PORT HOUSTON S/MWBE ENROLLMENT DIRECTORY

How do I identify Port Houston enrolled small, minority- and woman-owned businesses (S/MWBE)?

Search for businesses in 2 easy steps:

1. Visit <https://porthouston.smwbe.com> Under the section on the left labeled Small, Minority and Woman Owned Business Directory and Online Application select the blue button labeled, **"Find a S/MWBE Firm"**.

2. You will need to complete at least one of the fields in the popup window titled, Port Houston S/MWBE Enrollment Directory and Search.

PORT HOUSTON
THE INTERNATIONAL PORT OF TEXAS™

OUR MAIN SITE CONTACTS AND SUPPORT

PORT HOUSTON
BUSINESS EQUITY
COMPLIANCE SYSTEM

Log In

SMALL, MINORITY AND WOMAN OWNED BUSINESS
DIRECTORY AND ONLINE APPLICATION

Search for small, minority, and woman-owned businesses enrolled in Port Houston's Business Equity Programs, and/or apply to become an enrolled small, minority or woman-owned business.

Find a SMWBE Firm

OUTREACH & PROGRAM NOTICES

Business Networking Events

Detailed Description

RSVP For An Event

SYSTEM TRAINING

www.porthouston.smwbe.com



TIPS TO INCREASE S/MWBE PARTICIPATION

- Establish relationships with S/MWBEs in advance
- Use the Port of Houston Directory.
- Advertise opportunities
- Offer assistance and use the services and assistance, as appropriate, of such organizations as the Small Business Administration and the Minority Business Development Agency of the Department of Commerce.
- What subcontractor's have you done business in the past and do they qualify?



BUSINESS EQUITY CONTRACT REQUIREMENTS

- 11% Small Business Enterprise (SBE) participation, 10 points relative weight



PROCUREMENT



PORT HOUSTON

PROCUREMENT

- No Contact Period – No communication between interested vendors and Port Houston staff during the active period
 - Technical questions should be submitted via BuySpeed
 - Last day to submit questions: 7 days before due date (4/24/2024)
- Responses are due no later than 11 a.m. on 5/1/2024
- Proposals must be submitted electronically via email to:
procurementproposals@porthouston.com
- Use forms in the package
- Anticipated award date: 5/21/2024



EVALUATION CRITERIA

Port Houston will select the provider of the services offering the best value to Port Houston. The criteria and relative weights that will be considered by Port Houston in evaluating each Response are as follows:

Evaluation Criteria	Relative Weight (%)
Price	40
Reputation, Quality, Safety	25
Benefit to Port Authority	20
Overall Compliance with Port Authority Policies	5
Small Business Participation	10



PROJECT SCOPE



PORT HOUSTON

SCOPE OF WORK

A new Aids to Navigation (ATON) foundation structure will be constructed at the LBC Tank Terminal to facilitate the relocation of the navigational light that will align with the new, widened Project 11 Bayport Ship Channel centerline.

The major components of this project include, but are not limited to:

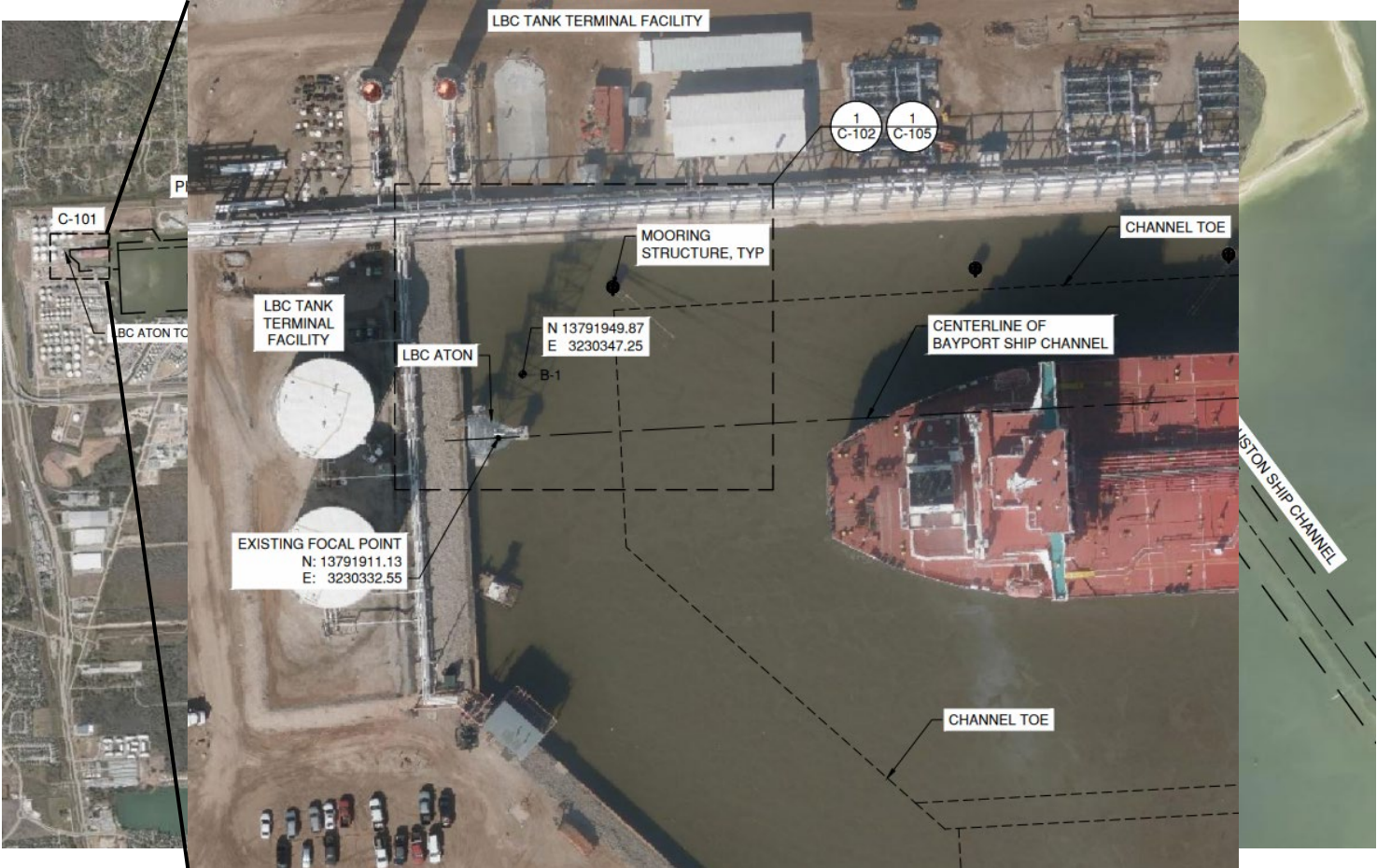
- Mobilization/ Demobilization
- Foundation Construction
- Concrete Pile Cap Construction & Installation
- Tower Relocation
 - Electrical Connection Reroute
 - Bulkhead Handrail Installation



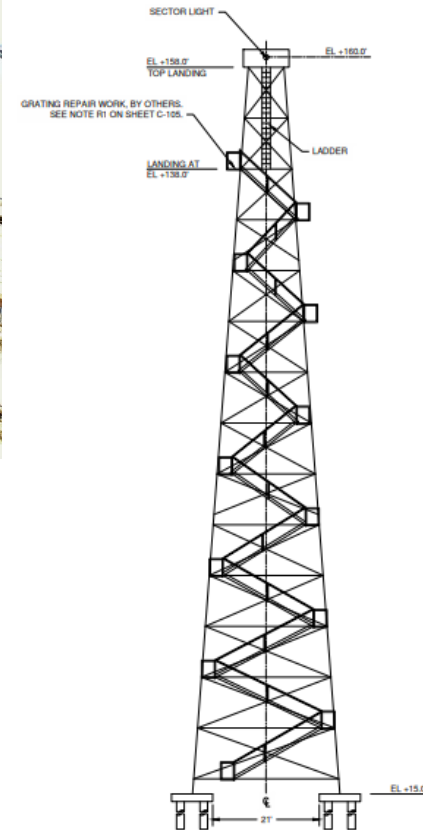
Project Location



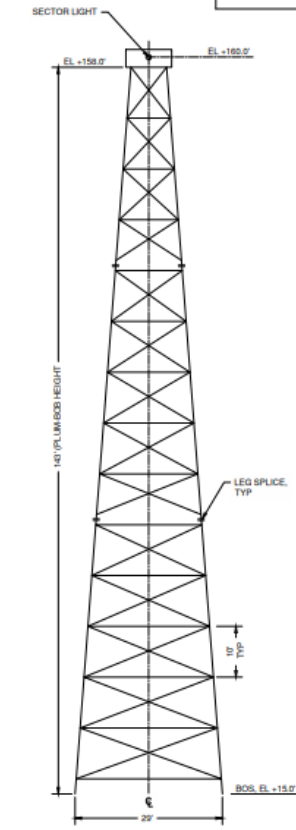
Project Location



Aid to Navigation (ATON)



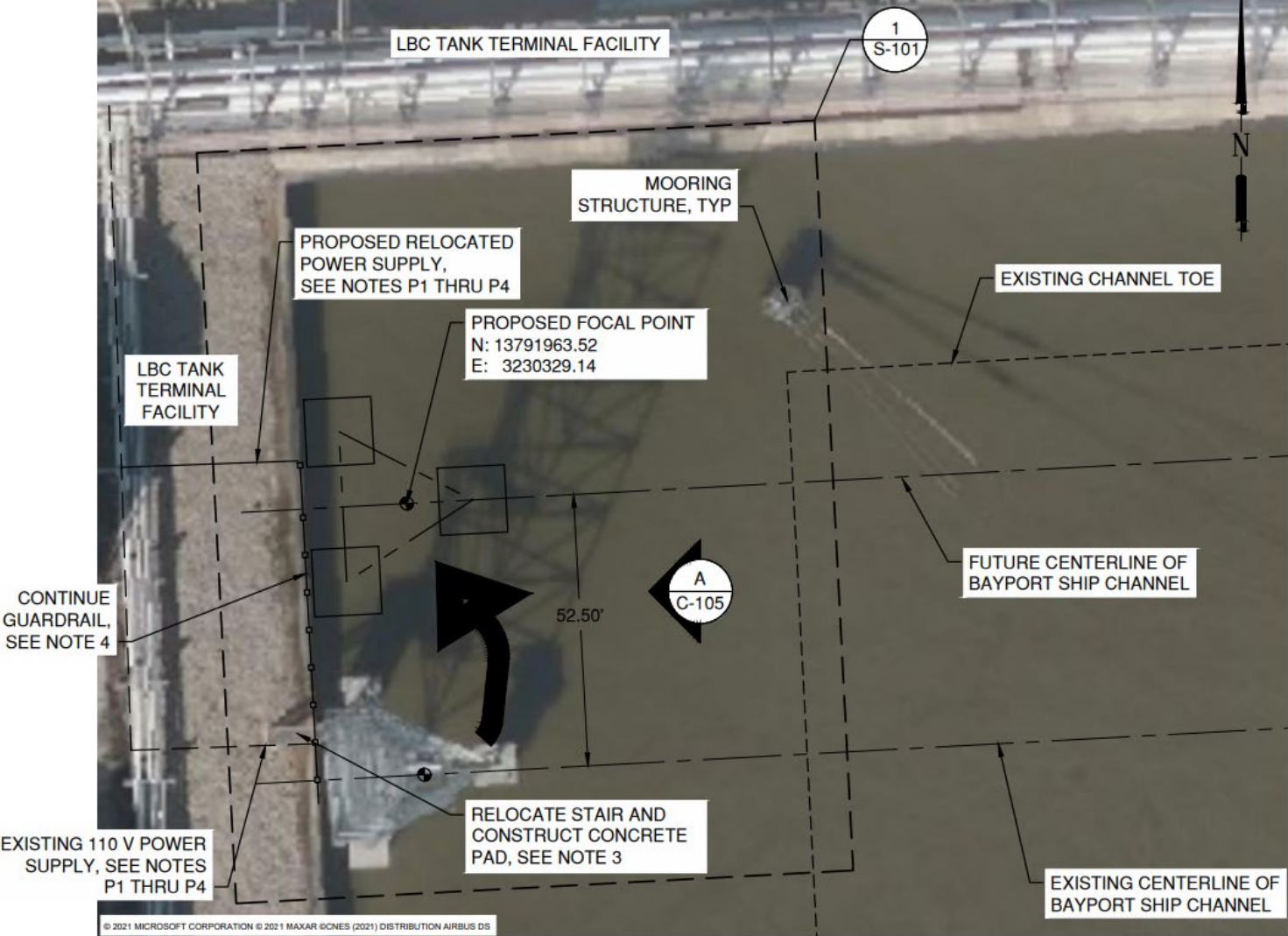
**(A) EXISTING WEST SIDE STAIRWAY-
GENERAL ARRANGEMENT**
SCALE: Custom



**(B) TYPICAL EXISTING FRAMING-
GENERAL ARRANGEMENT**
SCALE: Custom

GENERAL NOTES
1. REFER TO GENERAL NOTES ON SHEETS G-002 AND G-003.

ATON Relocation



Foundation

- New tower support foundations will consist of:
 - 3 clusters of (4) - 30" OD x $\frac{3}{4}$ " w.t. steel pipe piles, each.
 - Pile lengths: 8 piles @ 100 ft and 4 piles @ 110 ft
 - Coal-tar epoxy coated with HDPE wrap at splash zone
 - 13' x 13' x 3' precast concrete pile caps
 - Cast-in-Place concrete
 - 3' dia. x 2.5' pedestals for tower anchorage
 - Reinforced concrete pile plug



Site Visit

- Date: April 17, 2024
- Time 2:00 PM
- Address: LBC Terminal, 11666 Port Rd, Seabrook, TX 77586
- PROPER PPE & ID REQUIRED, PREFERABLY TWIC



QUESTIONS?

Procurement Services

Email:

procurement@porthouston.com

Phone: (713) 670- 2464

New BuySpeed URL:

<https://buyspeed.porthouston.com>



PORT HOUSTON