

CSP-3024 WATER SUPPLY AND FIRE PROTECTION SYSTEMS AT BARBOURS CUT TERMINAL

Pre-Proposal Meeting
January 9, 2024
10:00 a.m.

PORT HOUSTON



PORT HOUSTON

AGENDA

1. Pre-Proposal Meeting House Rules
2. Introductions
3. Business Equity
4. Procurement Services
5. Selection Criteria
6. Project Scope
7. Questions



PRE-PROPOSAL MEETING HOUSE RULES

- Attendees will begin the meeting in listen-only mode.
- There will be a Q&A session at the end of today's presentation.
- If you have any questions during the presentation, you may submit your Questions through the Teams Chat feature and they will be addressed at the end of the presentation.
- This presentation recording will be posted on the BuySpeed homepage under "Pre-Bid/Proposal Conference Information."



PHA PERSONNEL

- Roger Hoh– Director, Project & Construction Management
- Josh Keller– Project Manager, Project & Construction Management
- Yvette Camel-Smith – Director, Procurement
- Tanika Chukwumerije – Manager Contracts, Procurement
- Sommer Freeman – Contract Administrator, Procurement
- Dr. Sabeeta Bidasie-Singh - Directory, Business Equity
- Brenda Ruiz – Business Equity Supplier Diversity Manager

Non PHA Personnel:

- Robert Rocha – Harris County Wage Rate Monitor



Harris County Wage Rate Compliance & Requirements:

- Attendance at pre-bid/proposal meetings and preliminary meetings
- Review and approve weekly certified payroll records
- Monitor wage rate compliance
- Review claims of non-compliance from the field and recommend appropriate responses as required or permitted under the Wage Scale Act



PORT COMMISSION



Ric Campo
Chairman of the Port Commission



Dean E. Corgey
Commissioner



Clyde Fitzgerald
Commissioner



Stephen H. DonCarlos
Commissioner



Alan A. Robb
Commissioner



Wendy Montoya Cloonan
Commissioner



Cheryl D. Creuzot
Commissioner

BUSINESS EQUITY



PORT HOUSTON

BUSINESS EQUITY S/MWBE INITIATIVE

- Business Equity Division provides resources to small, minority- and woman-owned businesses (S/MWBE) seeking to participate in Port Houston procurements and contracts.
- Port Houston promotes business opportunities for all sectors of the community and recognizes the importance of vendor and supplier diversity in its contracts.
- Port Houston has established an organizational 35% Small Business participation goal and a 30% Minority- and Woman Business Enterprise (MWBE) aspirational goal.

35%

SBE participation
goal

30%

MWBE aspirational
goal



PORT HOUSTON

BUSINESS ENTERPRISE DEFINITIONS

Small Business Enterprise (SBE)

- Gross revenues or number of employees, averaged over the past three years does not exceed the size standards defined by SBA.
- The net worth of the owner must be less than \$1.32 million, excluding the owner's primary residence and assets of the business.

Minority Business Enterprise (MBE)

- At least 51% Owned by one or more Minority Individuals, or at least 51% of the equity is Owned by one or more Minority Individuals.
- Both the management and daily business operations are carried out and controlled by one or more of the Minority Individuals who own it.

Woman-Owned Business Enterprise (WBE)

- At least 51% Owned by one or more Women, or at least 51% of the equity is Owned by one or more Women
- Both the management and daily business operations are carried out and controlled by one or more of the Women who own it.



CERTIFYING PARTNERS

- City of Houston *
- Houston Minority Supplier Development Council
- METRO *
- National Minority Supplier Development Council & Affiliates
- Small Business Administration 8(a) *
- South Central Texas Regional Certification Agency – SCTRCA *
- Texas Comptroller of Public Accounts – HUB Certification
- Texas Department of Transportation – TxDOT *
- Women’s Business Enterprise Alliance
- Women’s Business Enterprise National Council & Affiliates – WBENC

* No fee to apply



PORT HOUSTON S/MWBE ENROLLMENT DIRECTORY

How do I identify Port Houston enrolled small, minority- and woman-owned businesses (S/MWBE)?

Search for businesses in 2 easy steps:

1. Visit <https://porthouston.smwbe.com> Under the section on the left labeled Small, Minority and Woman Owned Business Directory and Online Application select the blue button labeled, **"Find a S/MWBE Firm"**.

2. You will need to complete at least one of the fields in the popup window titled, Port Houston S/MWBE Enrollment Directory and Search.

PORT HOUSTON
THE INTERNATIONAL PORT OF TEXAS™

OUR MAIN SITE CONTACTS AND SUPPORT

PORT HOUSTON
BUSINESS EQUITY
COMPLIANCE SYSTEM

Log In

SMALL, MINORITY AND WOMAN OWNED BUSINESS DIRECTORY AND ONLINE APPLICATION

Search for small, minority, and woman-owned businesses enrolled in Port Houston's Business Equity Programs, and/or apply to become an enrolled small, minority or woman-owned business.

Find a SMWBE Firm

OUTREACH & PROGRAM NOTICES

Business Networking Events

Detailed Description

RSVP For An Event

SYSTEM TRAINING

www.porthouston.smwbe.com



TIPS TO INCREASE S/MWBE PARTICIPATION

- Establish relationships with S/MWBEs in advance
- Use the Port of Houston Directory.
- Advertise opportunities
- Offer assistance and use the services and assistance, as appropriate, of such organizations as the Small Business Administration and the Minority Business Development Agency of the Department of Commerce.
- What subcontractor's have you done business in the past and do they qualify?



BUSINESS EQUITY CONTRACT REQUIREMENTS

The project goal is 20% SBE, weight 10 points.



PROCUREMENT



PORT HOUSTON

PROCUREMENT

- No Contact Period – No communication between interested vendors and Port Houston staff during the active period
 - Technical questions should be submitted via BuySpeed
 - Last day to submit questions: 7 days before due date (1/17/2024)
- Responses are due no later than 11 a.m. on 1/24/2024
- Proposals must be submitted electronically via email to:
procurementproposals@porthouston.com
- Use forms in the package
- Anticipated award date: 2/29/2023



EVALUATION CRITERIA

Port Houston will select the provider of the services offering the best value to Port Houston. The criteria and relative weights that will be considered by Port Houston in evaluating each Response are as follows:

Evaluation Criteria	Relative Weight (%)
Price	35
Reputation, Quality, Safety	30
Benefit to Port Authority	20
Overall Compliance with Port Authority Policies	5
Small Business Participation	10



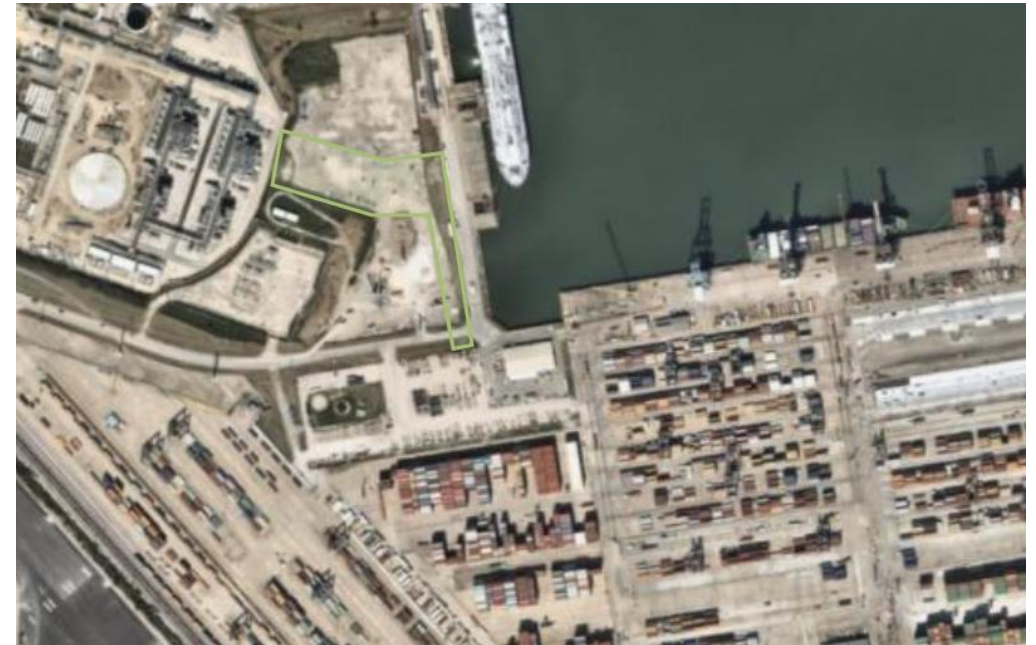
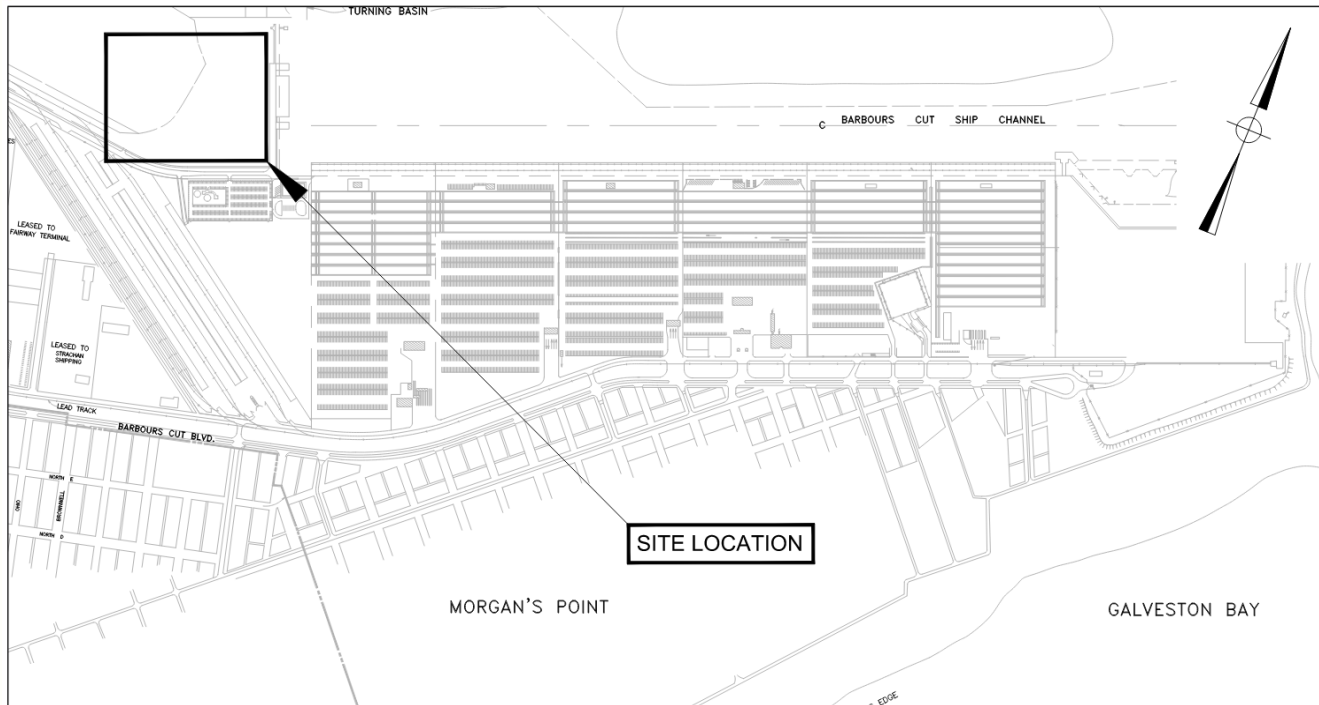
SCOPE OF WORK OVERVIEW



PORT HOUSTON

PROJECT LOCATION

- Barbours Cut Terminal
- Project will be within the Secure restricted area
- Container Yard on North L Street, directly west of Wharf 7



PROJECT SCOPE OVERVIEW

New Fire Water Supply and Fire Protection System

Site Improvements

- Demolition
- Yard Piping
- Grading
- Fence and gate

Mechanical Improvements

- Ground Storage Tank (GST)
- Pump Station and Building
- Control Valve Assembly

Electrical and Instrumentation

- Backup Generator
- Power for the GST
- Power for the Pump Station
- Power for Control Valve Assembly
- Site Lighting



PROJECT SCOPE

Water Line

DESIGN PARAMETERS

- Typical event use: One fire Hydrant: 1,000 GPM fire flow at 40 psi at the hydrant
- Extreme Event: Two Hydrants – 1,000 GPM fire flow at 450 PSI per hydrant
- Fire Flow and tank were designed for a 4-hour reserve.

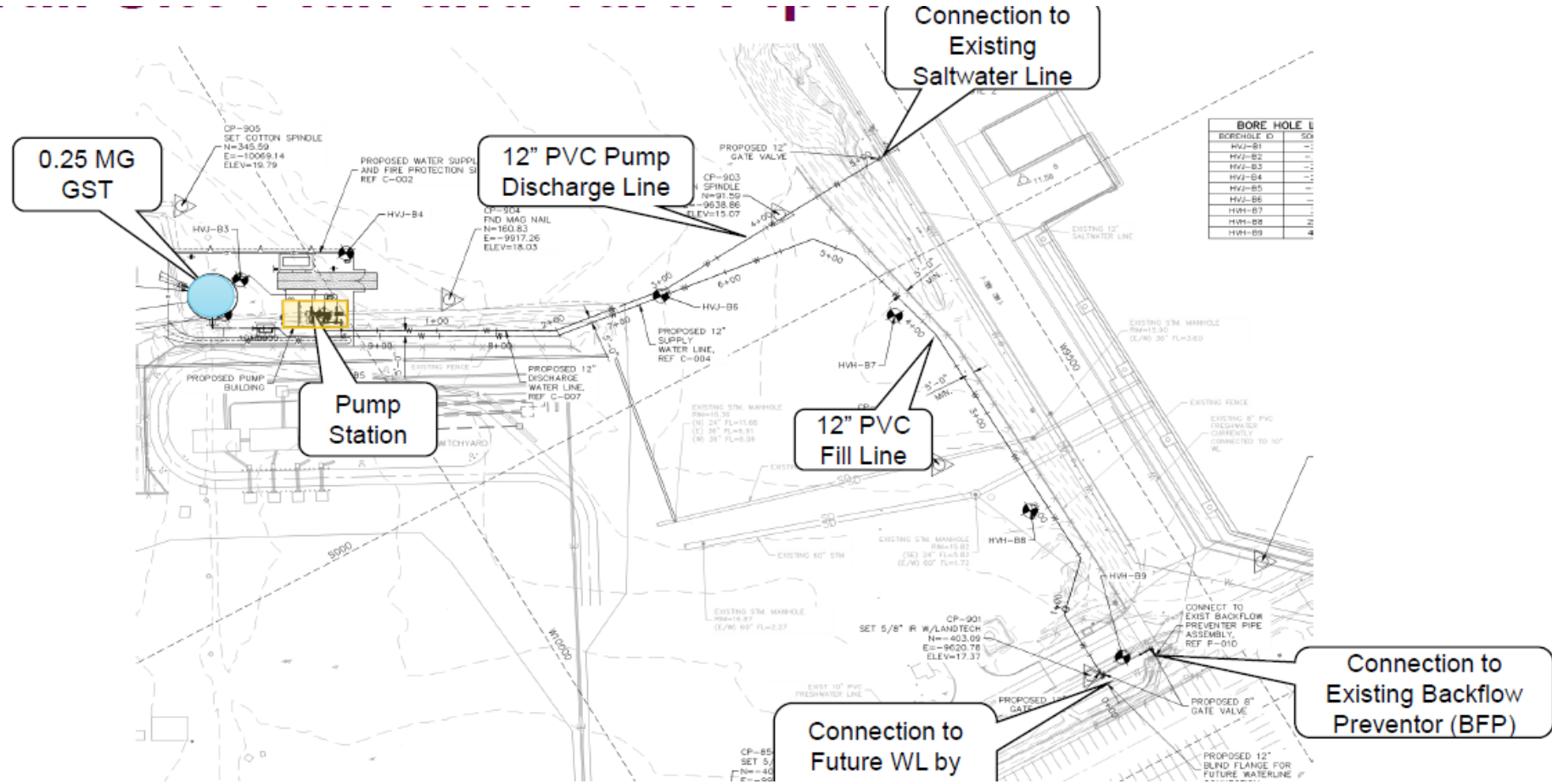
Pipe Materials:

- All buried pipe is specified as C900 PVC
- Buried Pipe between Ground Storage Tank and Pumps, and exposed pipes will be Schedule 40 Welded Steel



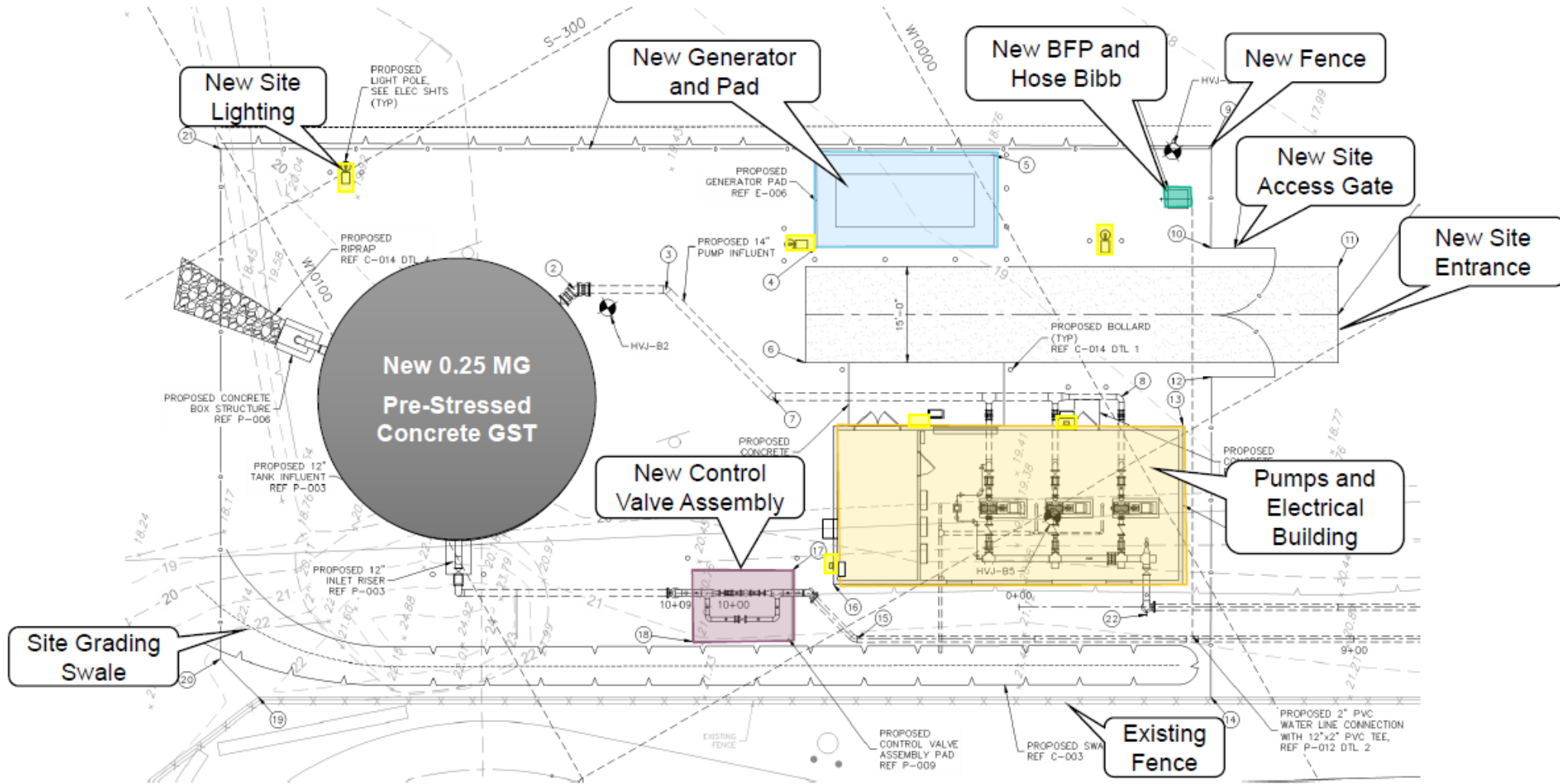
PROJECT SCOPE

Overall Site Plan and Yard piping



PROJECT SCOPE

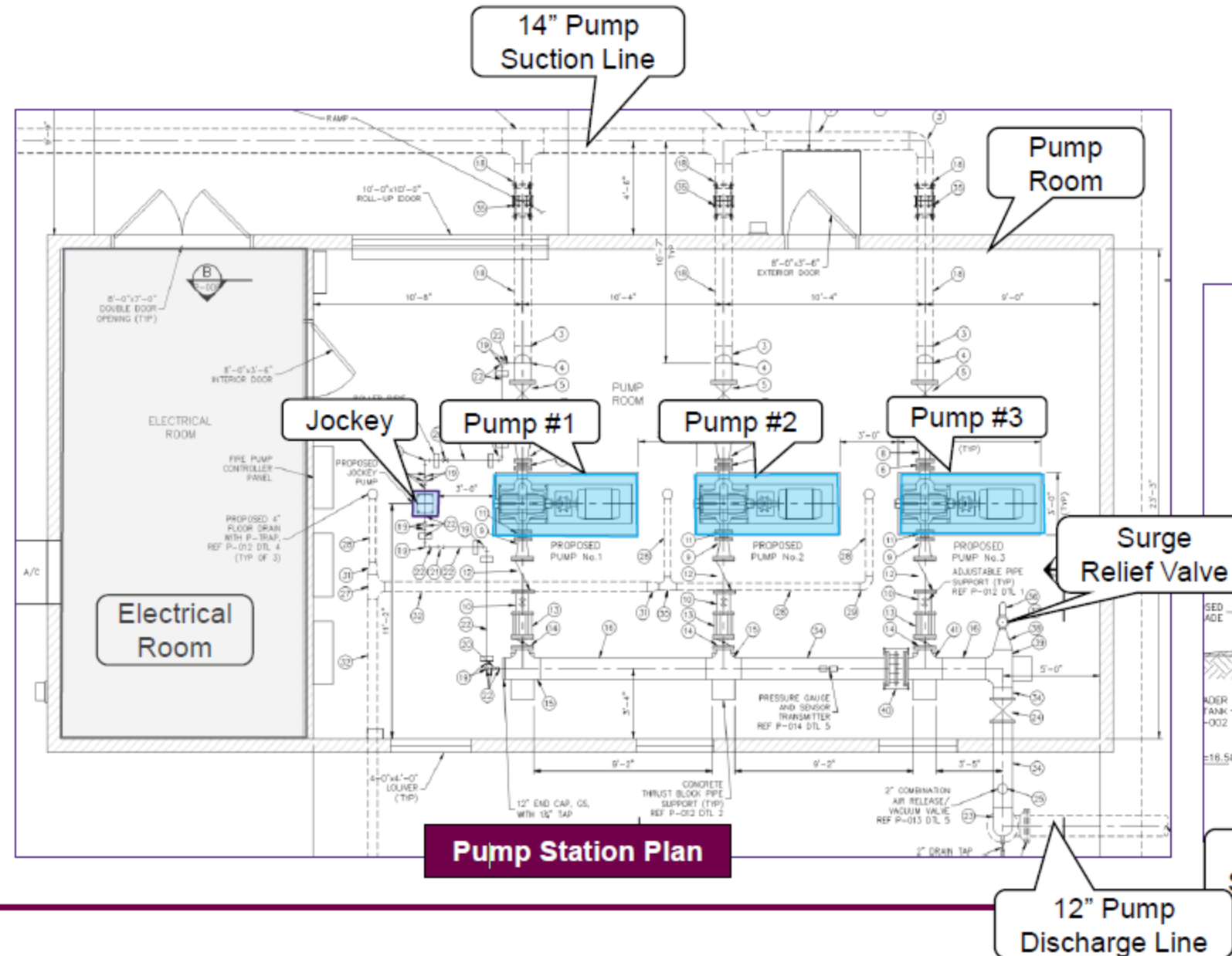
Site Facility Plan



PROJECT SCOPE

Pump Station and Building

- Designed for extreme events along the wharf – 2 hydrants fully opened, providing 2000 gpm. (1000 each)
- 14" Pump Discharge Line
- Vertical Multi-Stage Centrifugal Jockey Pump
- 3 – 1000 gpm, Horizontal Split Casing Pumps.
- Houses Pumps and electrical equipment for the system
- Pre-Fabricated Building installed on the foundation on-site



PROJECT SCOPE

Ground Storage Tank (GST)

- Circular pre-stressed concrete storage tank, AWWA D110
- Tank Capacity = 0.25 MG
- Maximum Side Water Depth (SWD) = 30 ft
- Tank Inside Diameter = 37.7 ft
- Tank Outside Diameter = 40.5 ft
- Finished Floor Elevation 22 ft

The GST provides enough storage to provide 1,000 gpm of flow for 4 hours. There is a 0.5-foot freeboard from the design WSE and overflow water level at 52.5 feet.

Inlets/Outlets

- One (1) 12-inch top fill inlet pipe
- One (1) 14-inch outlet connected to pumps common suction pipe located at tank bottom
- One (1) 8-inch tank drain discharging into a concrete splash box
- One (1) 12-inch overflow pipe discharging into a concrete splash box

Foundation

- Consists of Well-Compacted granular base material, Supported by cast-in-place piles of geo-piers to reduce differential settlement and potential vertical rise.
- Seepage system to be installed deeper to serve as a drainage system and leak collection system to mitigate groundwater concerns.



PROJECT SCOPE

Ground Storage Tank (GST)

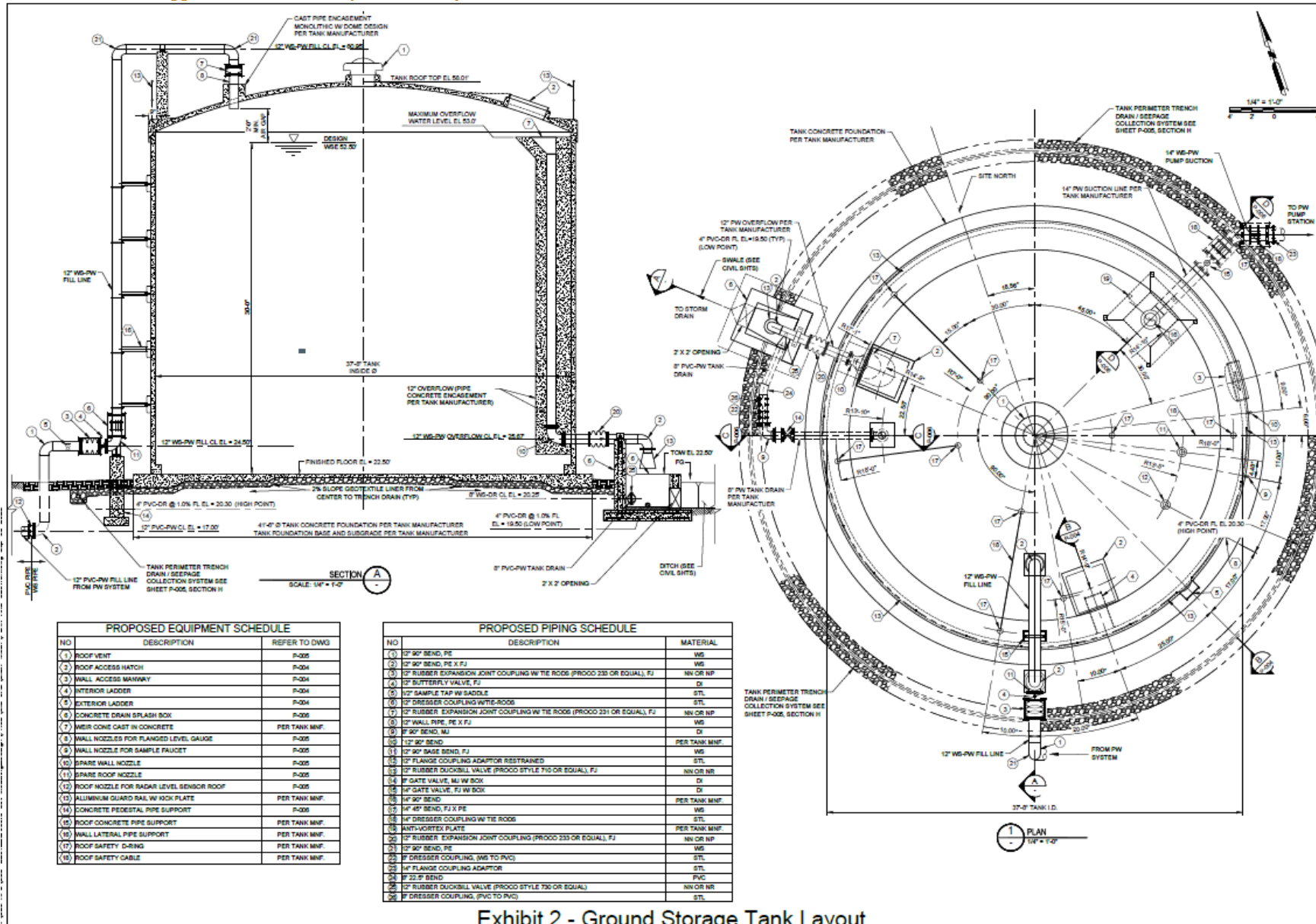


Exhibit 2 - Ground Storage Tank Layout

PROJECT SCOPE

Electrical Infrastructure

- Pumps Station Electrical Room will house auto-sensory panel, lighting control panel, disconnect switch, transformer, pump controls for each pump and jockey pump.
- Electrical ductbanks will connect electrical service throughout the site.

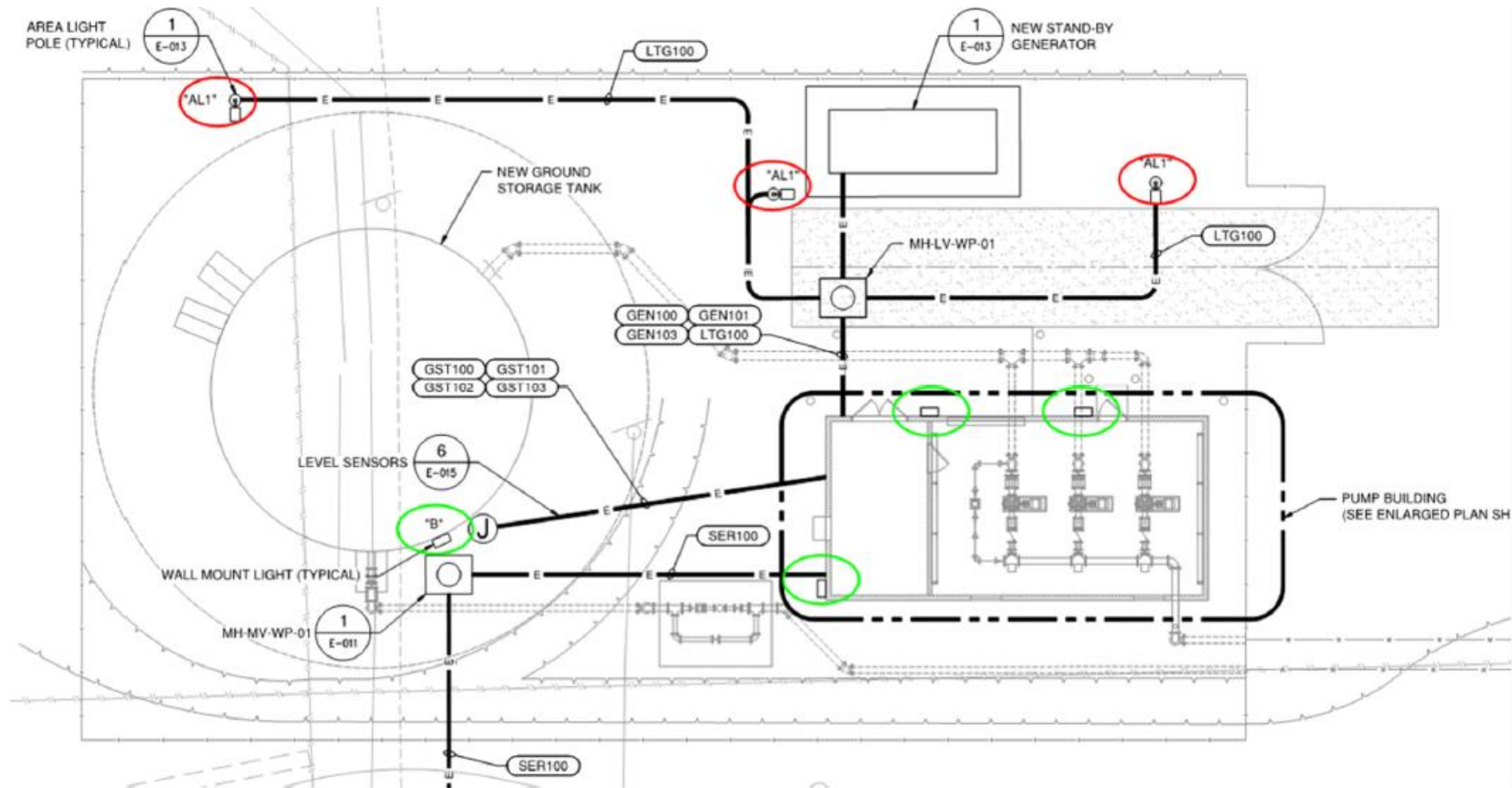


Figure 2 – Electrical Site Plan

PROJECT SCOPE

Demolition of existing Fire water Infrastructure

- Saltwater pump within building demolition
- Mobile Saltwater pumps
- Existing saltwater connections



SALTWATER PUMP BUILDING DEMOLITION
N.T.S.



SALTWATER PUMP BUILDING DEMOLITION
N.T.S.



SALTWATER PUMP BUILDING DEMOLITION
N.T.S.



MOBILE SALTWATER PUMP CONNECTION
N.T.S.



NORTH FIRE HYDRANT MODIFICATION
N.T.S.



PROJECT SCOPE

Special Conditions

- Some work is being done within Enterprise Products leased space on Wharf 8. Safety precautions, certifications and training courses required for work within their facilities is as follows:
 - TWIC
 - Basic Plus Training
 - 811 Call – Enterprise products will assist in utility markings
 - Enterprise Products General Orientation – 12ENTGEN**
 - Enterprise Products Offsites Training – 09ENPHRO**
- ** Offered by Houston Area Contractor Safety Council and similar organizations



PROJECT SCOPE

Milestones

- This project does consist of 1 Interim Milestone
 - Ordering all long lead time electrical items. These items include the generator, 15kV disconnect switch, 15kV Transformer switch, 15kV Cable, and other items listed in the **Unincorporated Materials** Exhibit, need to be submitted for review, and placed to order within the first 45 calendar days of the contract. This is to help with extensive lead times on these items from delaying contract completion
- Contractor should review the unincorporated materials exhibit in the bid documents.



SITE VISIT

- **January 9, 2024, at 2:00 p.m.**
- **Contract Duration: 380 days from NTP**
- Address: Barbours Cut Terminal Adm. Bldg., 1819 E. Barbours Cut Boulevard, La Porte, Texas 77571
- PROPER PPE & ID REQUIRED, PREFERABLY TWIC



QUESTIONS?

Procurement Services

Email: procurement@porthouston.com

Phone: (713) 670- 2464

New BuySpeed URL:

<https://buyspeed.porthouston.com>



PORT HOUSTON