

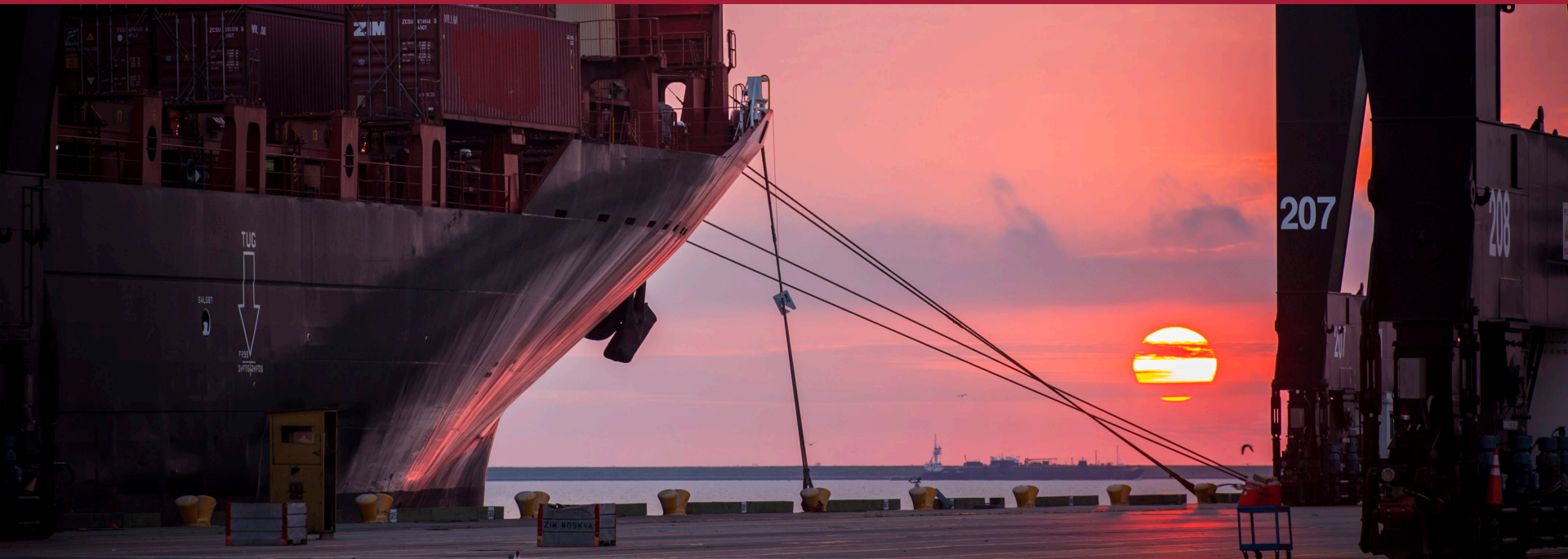


PORT HOUSTON
THE INTERNATIONAL PORT OF TEXAS™

PORT HOUSTON
THE INTERNATIONAL PORT OF TEXAS™

CSP-1396 Placement Area Maintenance Pre-Proposal Meeting

Mollie Powell | Project Manager | January 29, 2020



Port Commission



PORT HOUSTON
THE INTERNATIONAL PORT OF TEXAS™



Ric Campo
Chairman



Dean E. Corgey



Clyde Fitzgerald



Theldon R. Branch, III



Stephen H. DonCarlos



Roy D. Mease



**Wendolynn "Wendy"
Montoya Cloonan**

CSP-1396 Placement Area Maintenance

Agenda

1. Introductions
2. Harris County
3. Small Business
4. Procurement Services
5. Scope of Work
6. Questions

*All attendees must sign-in

Vicinity Map



PORT HOUSTON
THE INTERNATIONAL PORT OF TEXAS™



Overview



PORT HOUSTON
THE INTERNATIONAL PORT OF TEXAS™

- Weekly Inspection Report – 5 sites
- Monthly Inspection Report
- Mow grass at 5 sites
- Edging of grass along sidewalks and concrete curbs at 2 sites
- Collect and dispose tires
- Collect and dispose trash
- Removal of dead trees
- Clearing and grub trees, brush, stumps, roots
- One time clearing at Rosa Allen tract
- One time trash removal at Glendale tract
- Manage mosquito control devices
- Manage water level in placement areas
- Attend community events/ meetings as needed
- Provide transportation to sites for POHA staff as needed

Required Application iPad

- Weekly Inspection
- Monthly Inspections
- Contractor is required to provide iPad with 3G cellular coverage
- Photos of site conditions, document trash, tires, waste, and trees removed



3:43 1 LTE

Placement Area Inspection Save

Inspector Name
rruchhoeft@poha.com >

Placement Area Name >

Date and Time of Inspection
1/27/20, 3:42 PM >

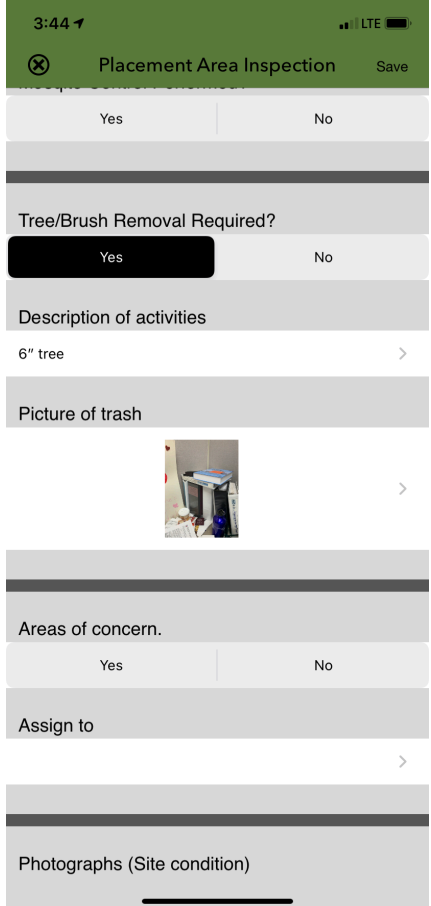
Weather Condition >

Site under contract by others?
Yes No

Is this site being drained?
Yes No

Waste Disposal Required?
Yes No

Mosquito Control Performed?



3:44 1 LTE


Placement Area Inspection Save

Yes No

Tree/Brush Removal Required?
Yes No

Description of activities
6" tree >

Picture of trash >



Areas of concern.
Yes No

Assign to >

Photographs (Site condition)

Vicinity Map



PORT HOUSTON
THE INTERNATIONAL PORT OF TEXAS™



Filter Bed Site



PORT HOUSTON
THE INTERNATIONAL PORT OF TEXAS™



 Approximate mowing limits

Note: Contractor shall mow to the edge of Dorsett Street, including the roadside ditch.


Glendale Site:



PORT HOUSTON
THE INTERNATIONAL PORT OF TEXAS™




 Approximate mowing limits

 One-time trash and debris removal.

Note: Mow up to street curb along Gellhorn and Lanewell. Contractor shall cut (“edge”) grass extending on to concrete.

House, Stimson, and Clinton Sites:





 Approximate mowing limits

Note: Mowing limits along the western edge of Clinton (West) extend to residential property line. Mowing along Mercury drive excludes areas between and including roadside ditches. Mowing along northern edge extends to concrete lined Flood Control ditch. Eastern edge extends to road edge of Mercury Drive.

Rosa Allen Site:



-  Approximate mowing limits
-  One-time additional clearing to allow for future mowing – Clear all vegetation within ditch, top of bank to top of bank. (Note: may require manual labor). Once cleared, mowing will follow cycle schedule.

Note: Mow to edge of all public roads (Scarborough, Southmore, and Allen-Genoa). Contractor shall cut (“edge”) grass extending over concrete curbs and sidewalks.




PORT HOUSTON
THE INTERNATIONAL PORT OF TEXAS™



PORT HOUSTON
THE INTERNATIONAL PORT OF TEXAS™

GBB Site:



 Approximate mowing limits

Lost Lake Site:



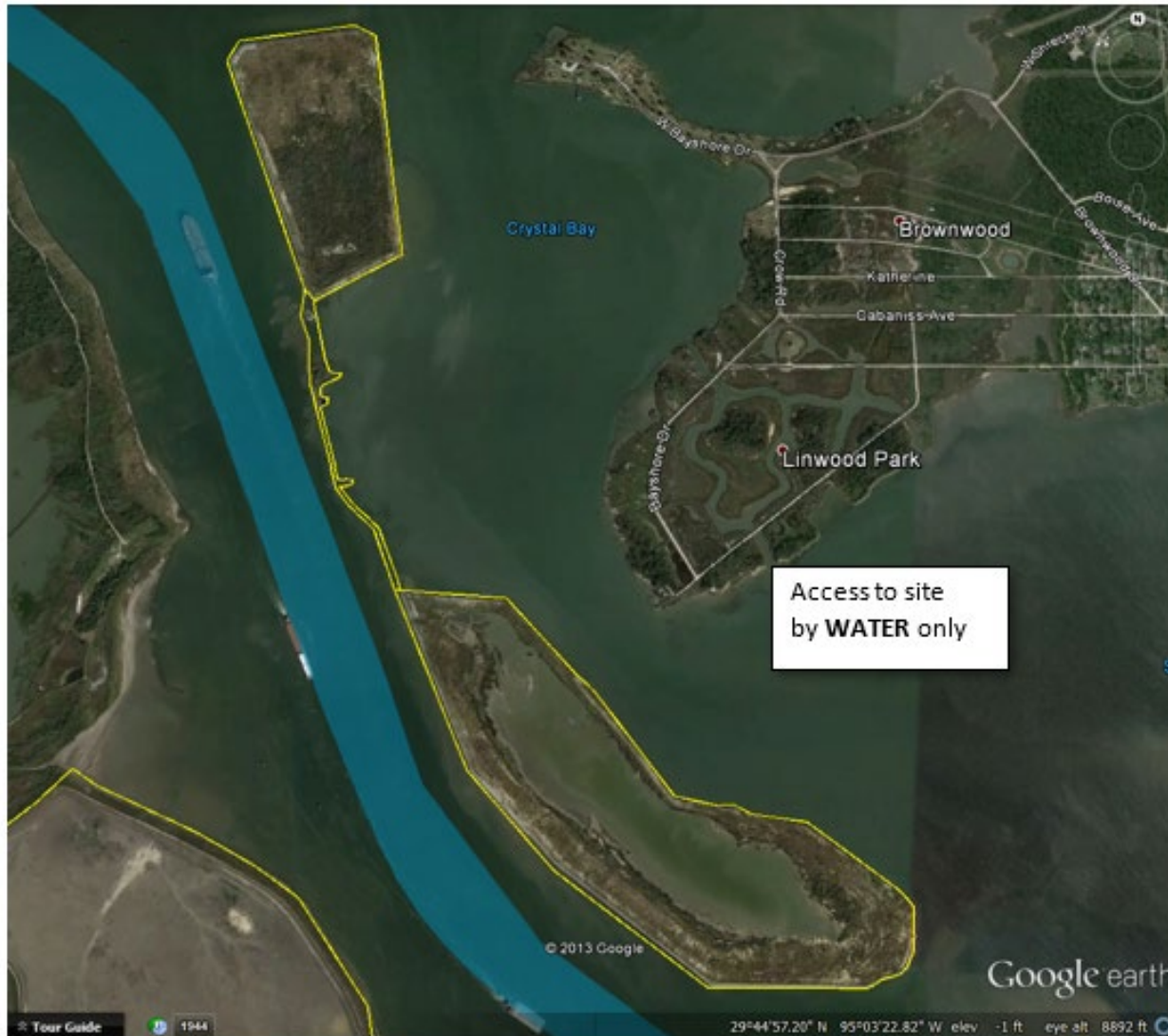
PORT HOUSTON
THE INTERNATIONAL PORT OF TEXAS™



Goat Island Site:



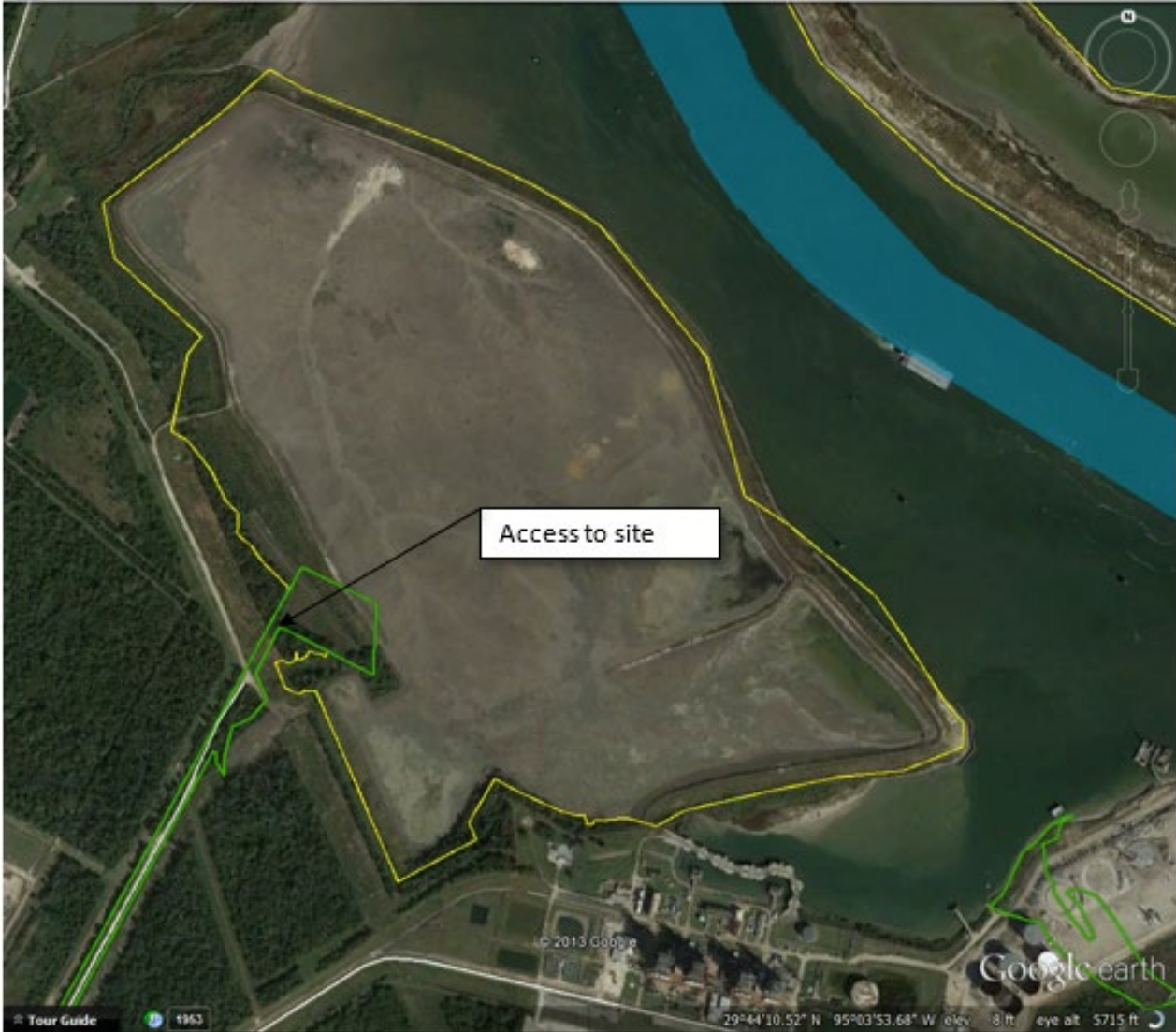
PORT HOUSTON
THE INTERNATIONAL PORT OF TEXAS™



Peggy Lake Site:



PORT HOUSTON
THE INTERNATIONAL PORT OF TEXAS™





PORT HOUSTON
THE INTERNATIONAL PORT OF TEXAS™

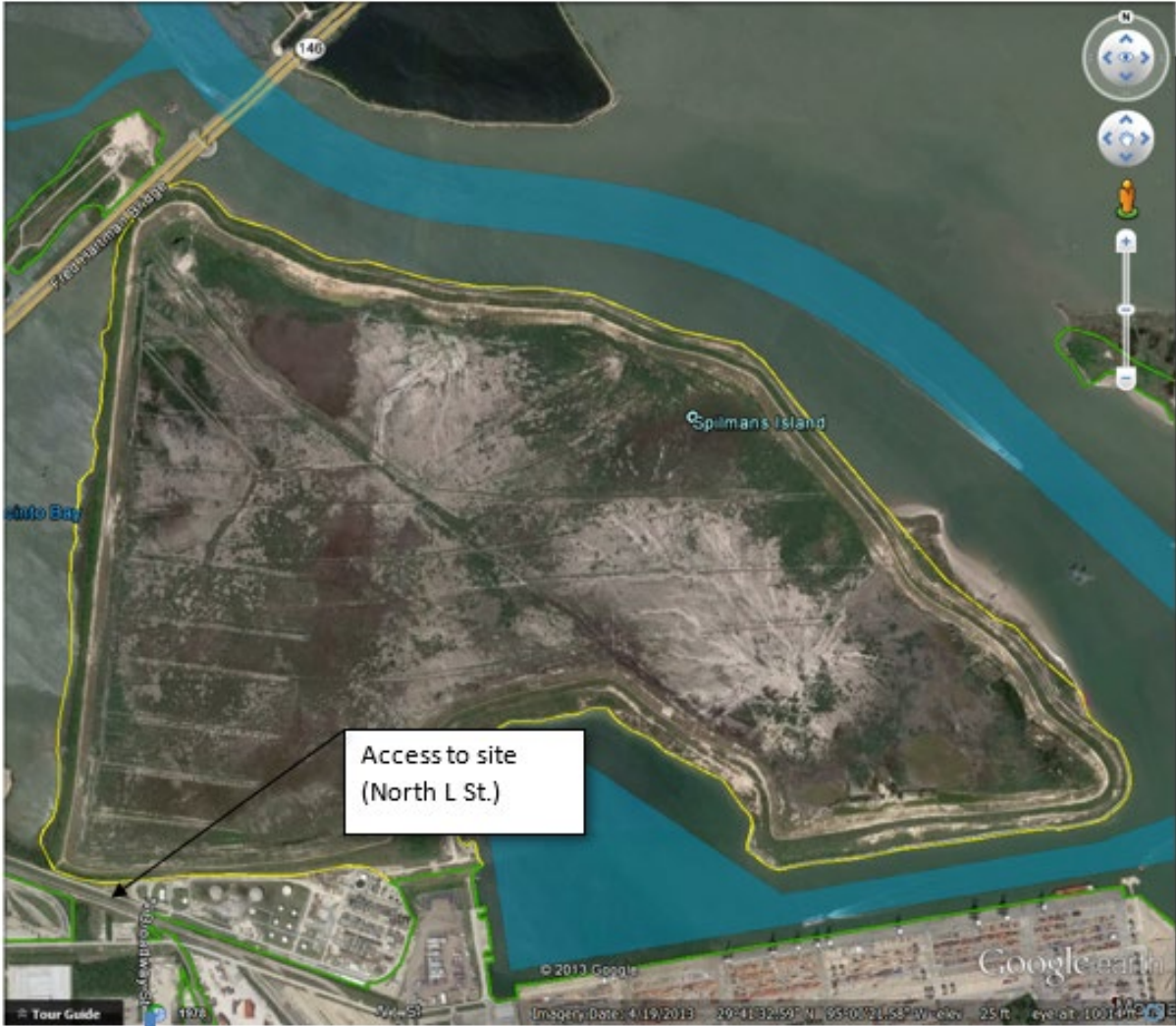
Alexander Island Site:



Spilman Site:



PORT HOUSTON
THE INTERNATIONAL PORT OF TEXAS™



Access to site
(North L St.)

To Barbour's Cut
Boulevard

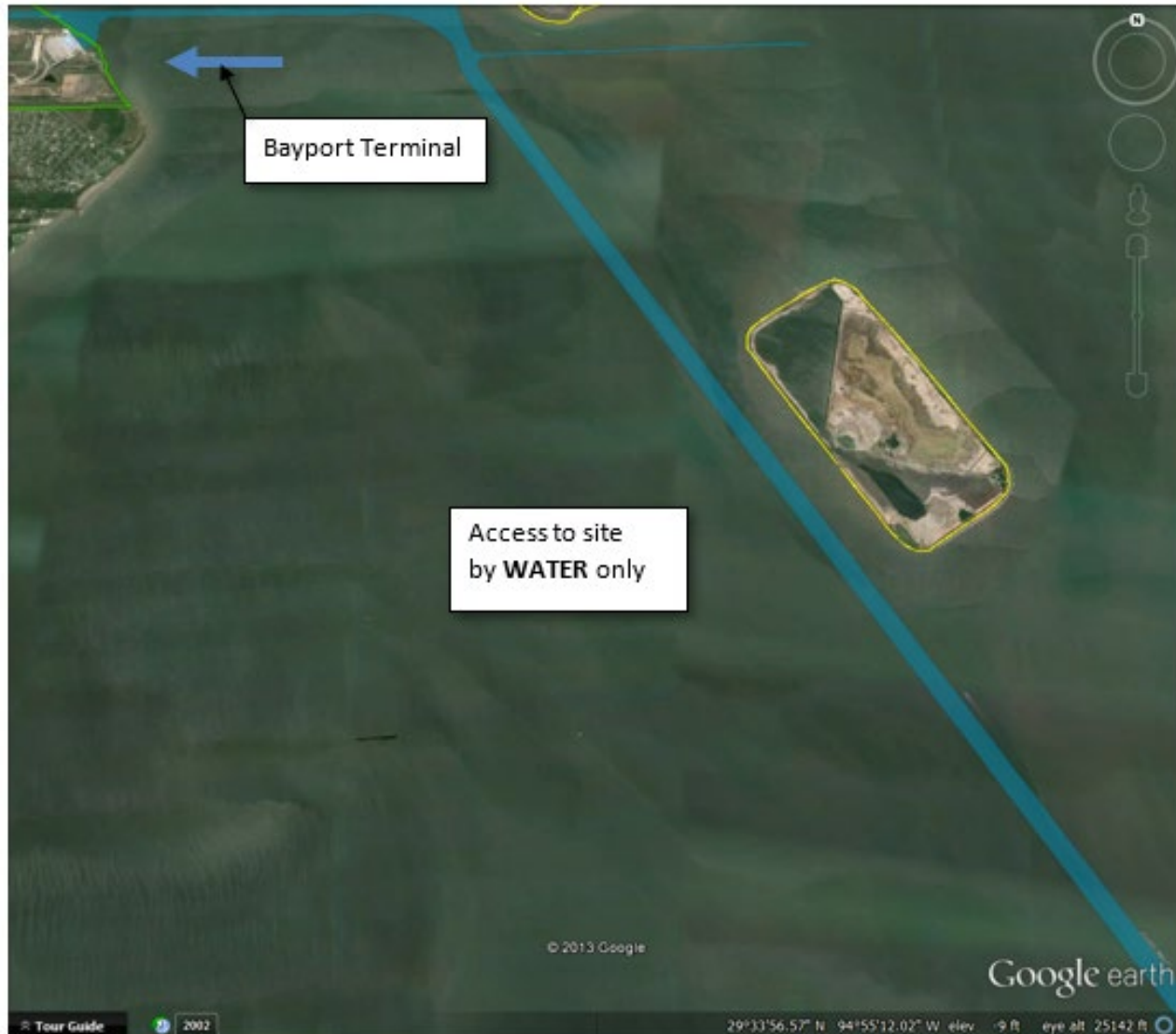


PORT HOUSTON
THE INTERNATIONAL PORT OF TEXAS™

Atkinson Island, Placement Areas 14 and 15, and Marsh Areas:



Midbay:

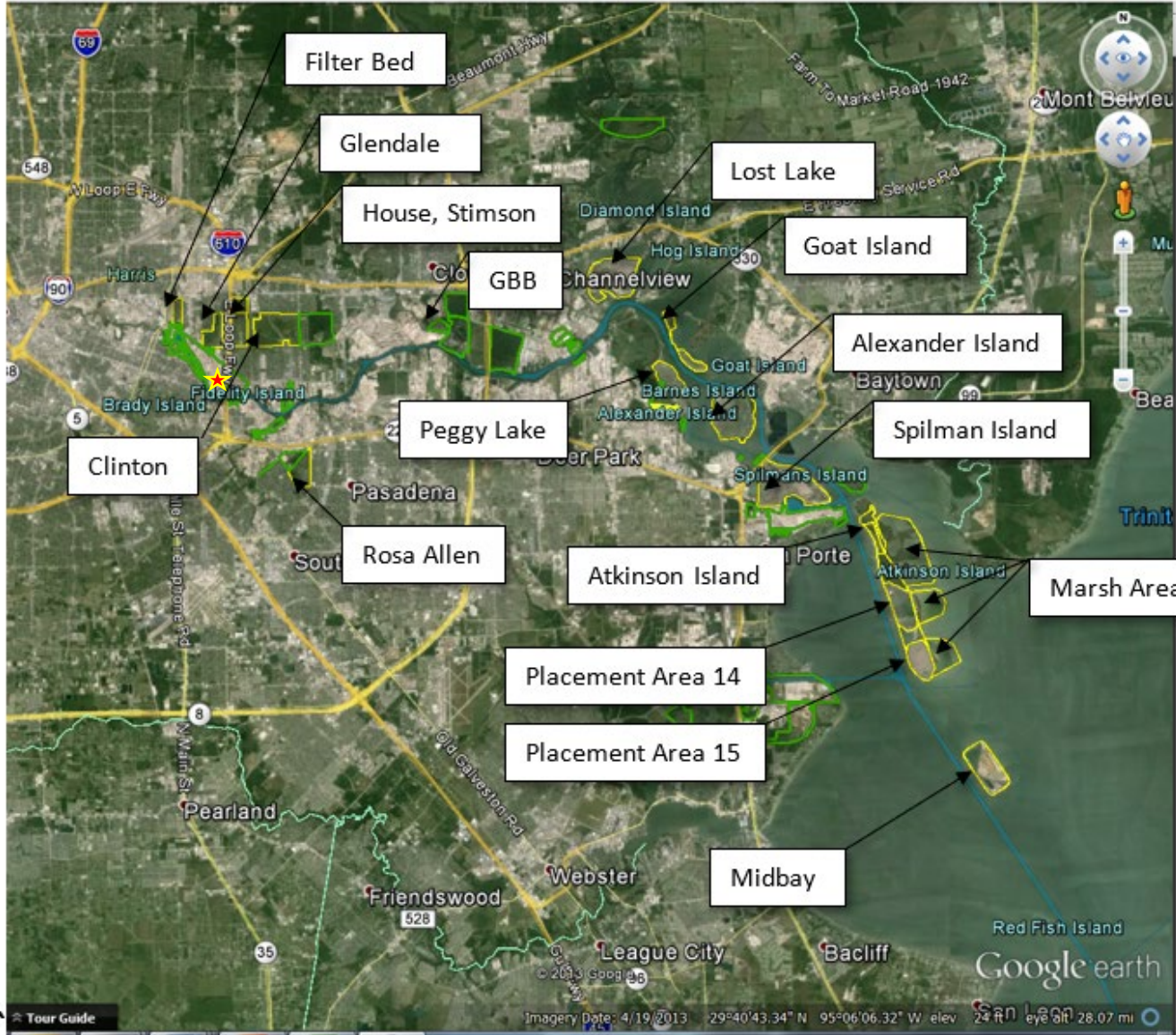


PORT HOUSTON
THE INTERNATIONAL PORT OF TEXAS™

Vicinity Map



PORT HOUSTON
THE INTERNATIONAL PORT OF TEXAS™





PORT HOUSTON
THE INTERNATIONAL PORT OF TEXAS™

THANK YOU

Mollie Powell

Coordinator, Channel Development
Business

Port Houston

Questions?

www.PortHouston.com

111 East Loop North
Houston, TX 77029