

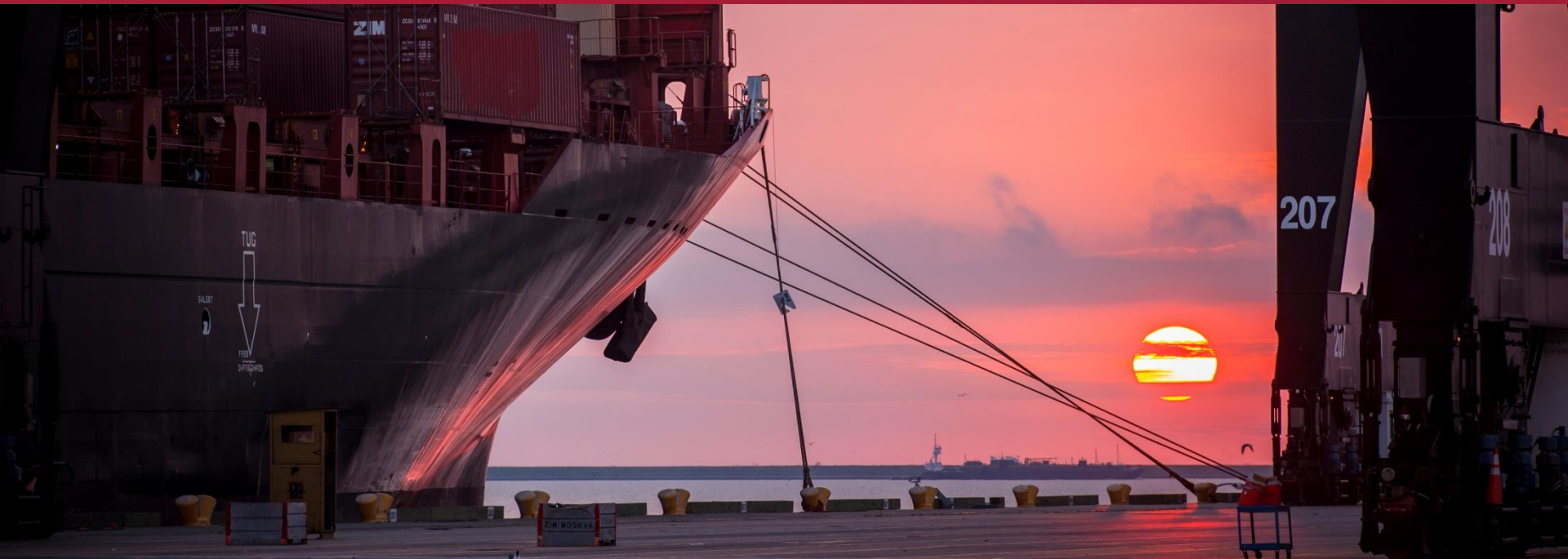


PORT HOUSTON
THE INTERNATIONAL PORT OF TEXAS™

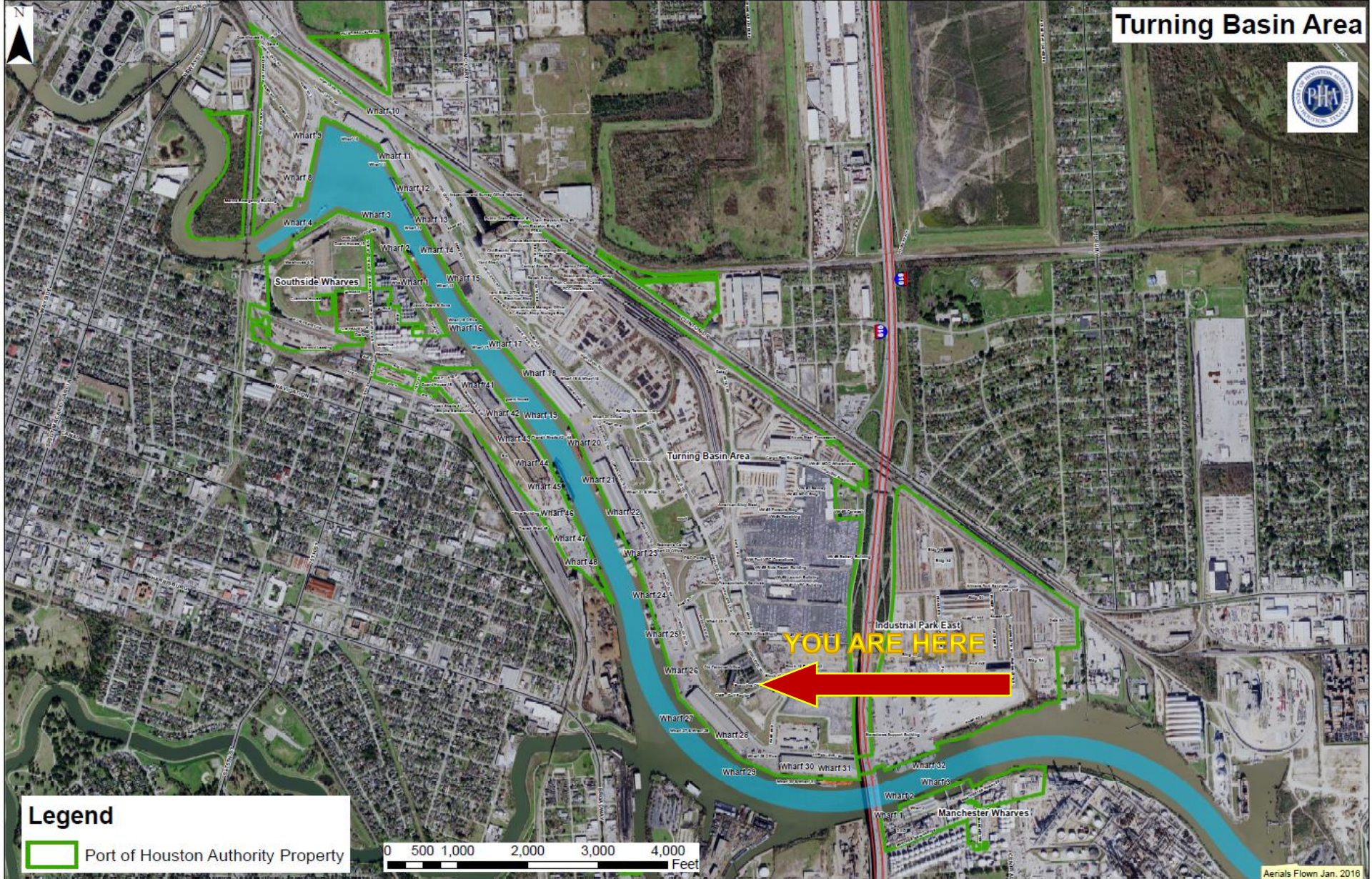
PORT HOUSTON
THE INTERNATIONAL PORT OF TEXAS™

CSP-1373 REHABILITATION OF WHARVES 4 AND 5 AT BAYPORT CONTAINER TERMINAL

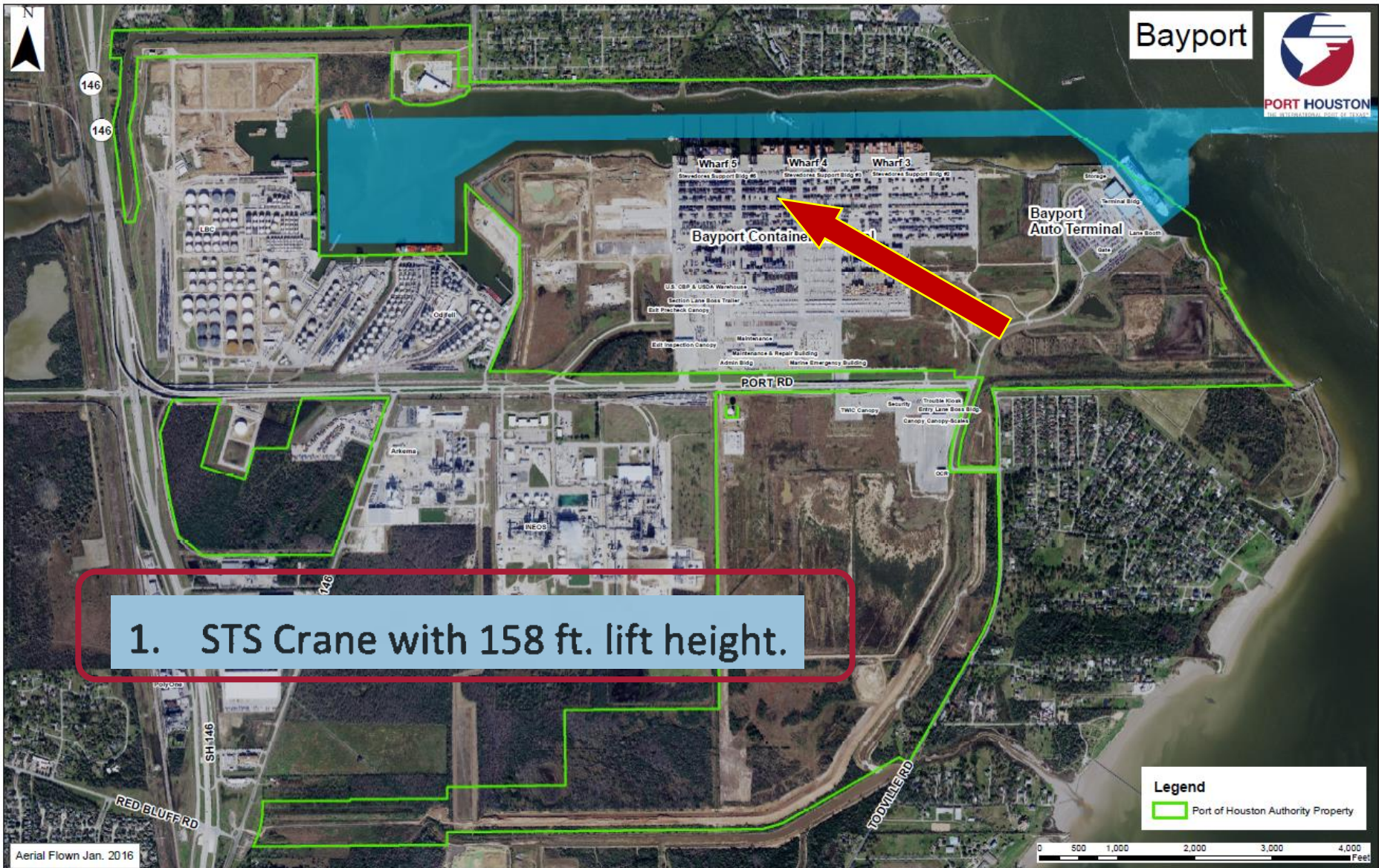
Eddy Kharrazi, P.E. | Project Manager | Project & Construction Management (PCM)



RFQ-898 - Analysis & Design for the Rehab of Wharves 4&5 at BPT

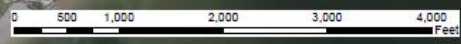


RFQ-898 - Analysis & Design for the Rehab of Wharves 4&5 at BPT



1. STS Crane with 158 ft. lift height.

Legend
[Green Outline] Port of Houston Authority Property





PORT HOUSTON
THE INTERNATIONAL PORT OF TEXAS

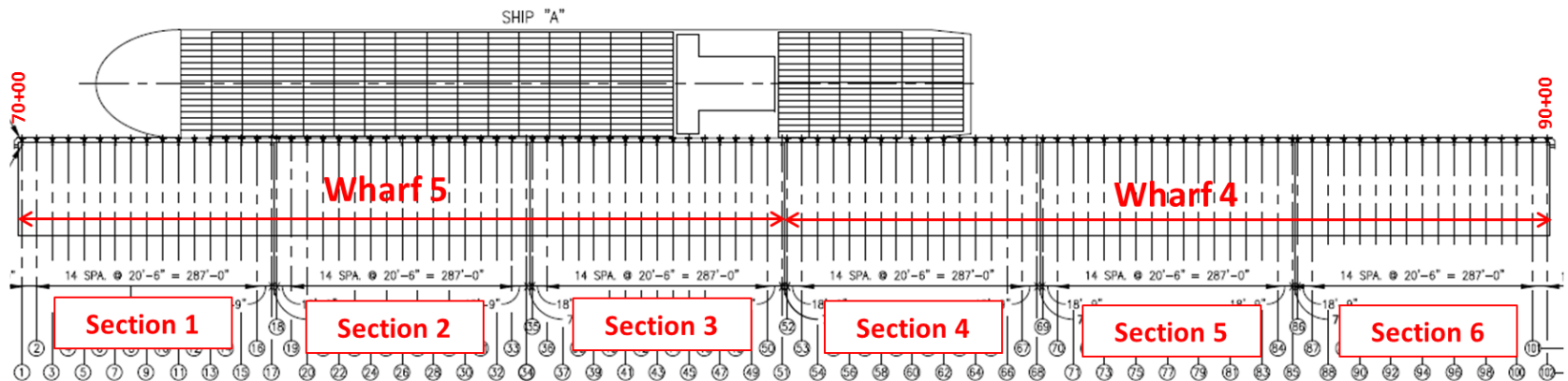
Wharves 4 & 5 Overview



- Western End Wharf of Bayport Terminal.
- 2000-ft Long x 200-ft Wide



Wharves 4 & 5 Plan



- Each wharf consists of 3 wharf sections.
- Each wharf section is about 332-ft long.

Sample Repair



PORT HOUSTON
THE INTERNATIONAL PORT OF TEXAS™



Sample Repair



PORT HOUSTON
THE INTERNATIONAL PORT OF TEXAS™



Sample Repair

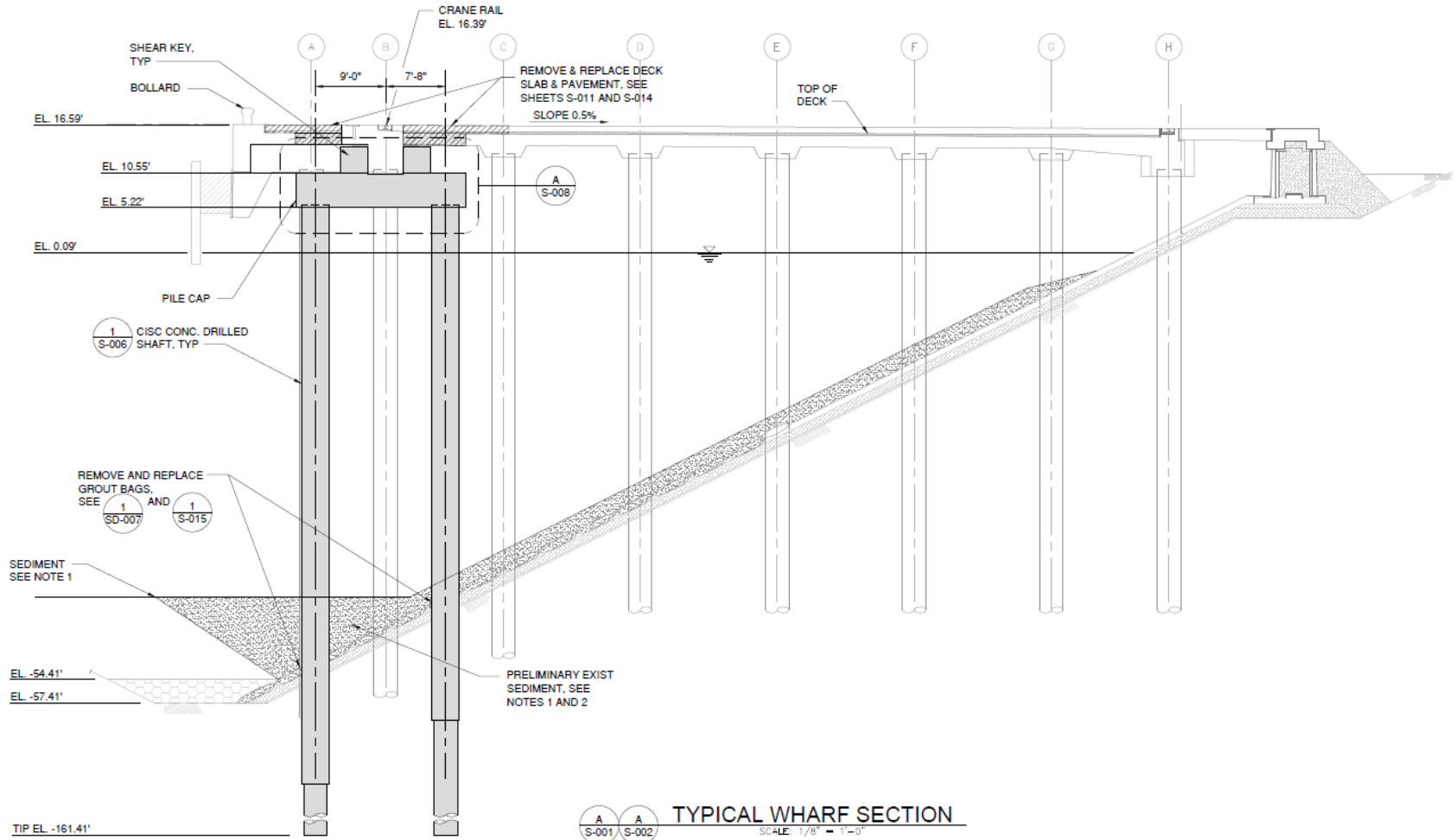


PORT HOUSTON
THE INTERNATIONAL PORT OF TEXAS



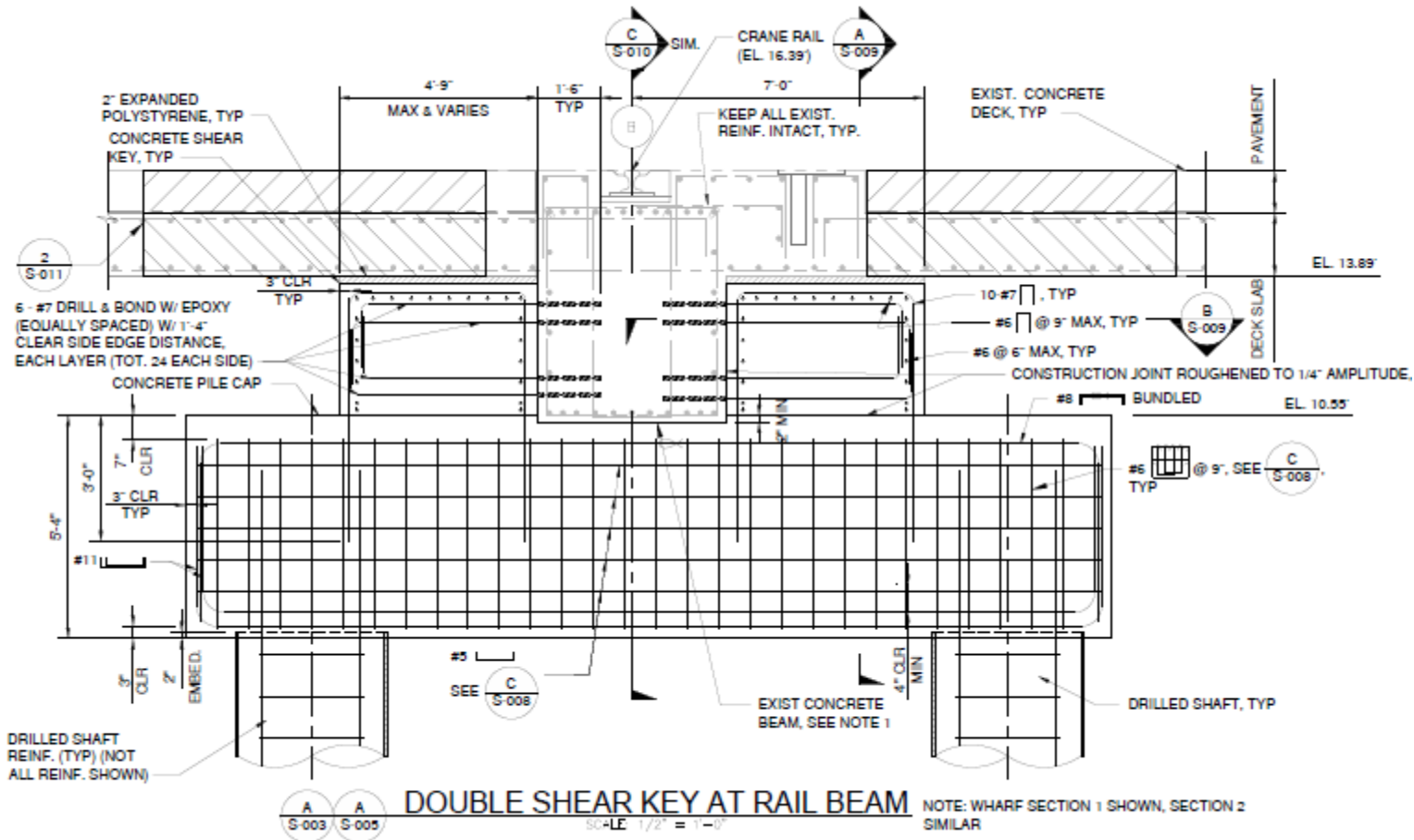


Proposed Wharf Strengthening Section





Design of New Tie-down

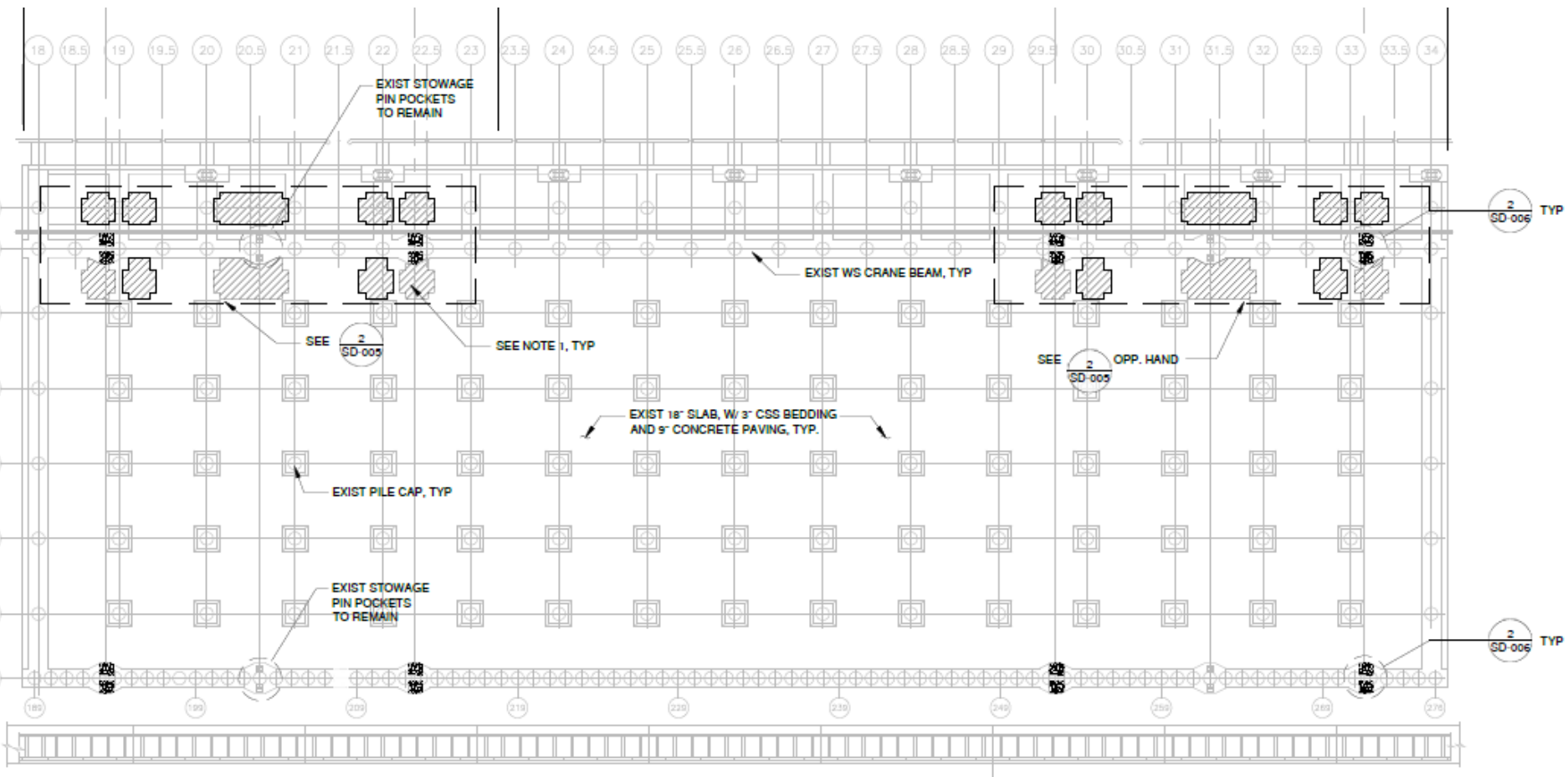


Wharf Section 1

Pavement Removal Plan



PORT HOUSTON
THE INTERNATIONAL PORT OF TEXAS

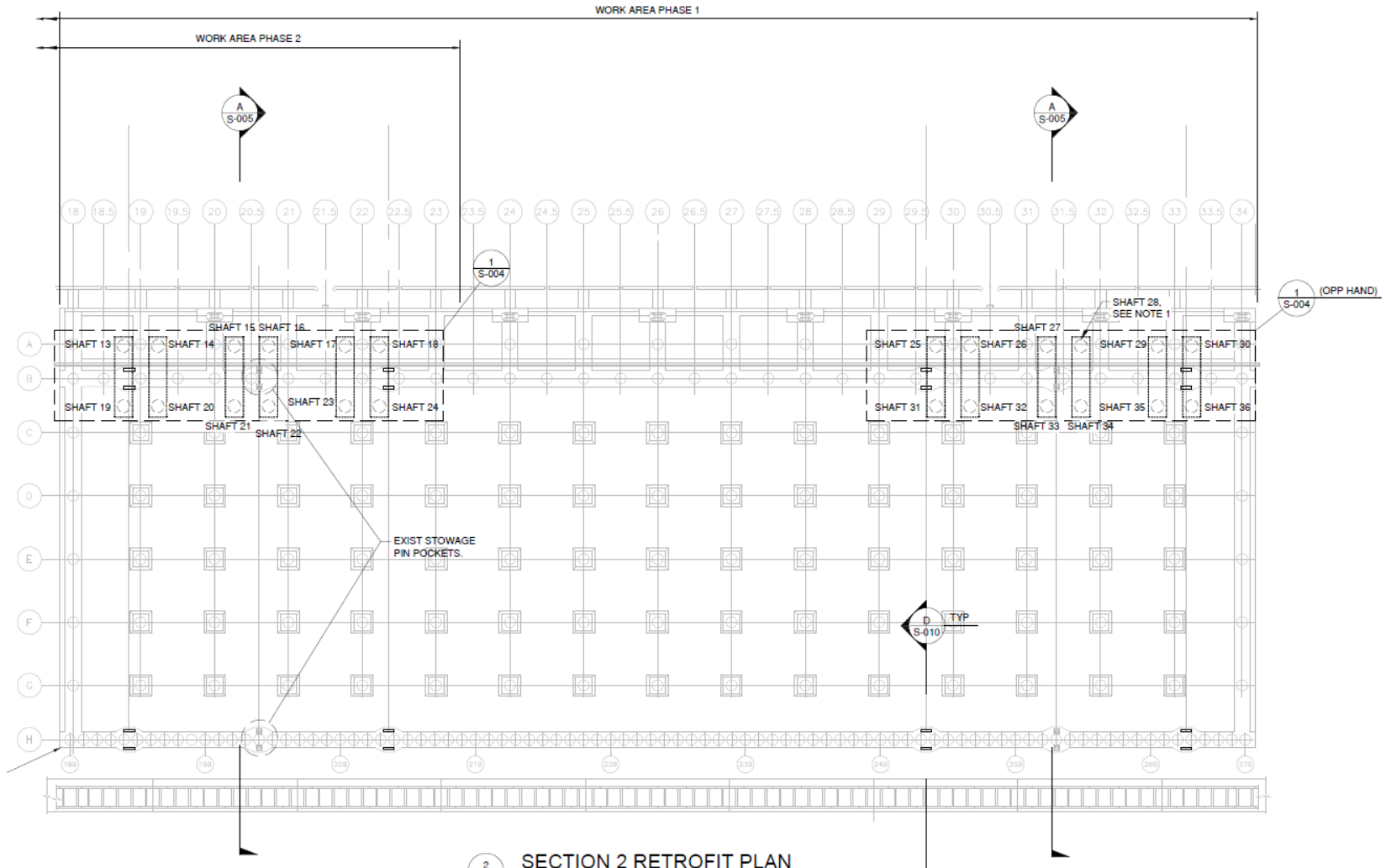


2 SECTION 2 REMOVAL PLAN
SCALE 1/16" = 1'-0"





Proposed Wharf Strengthening - Plan

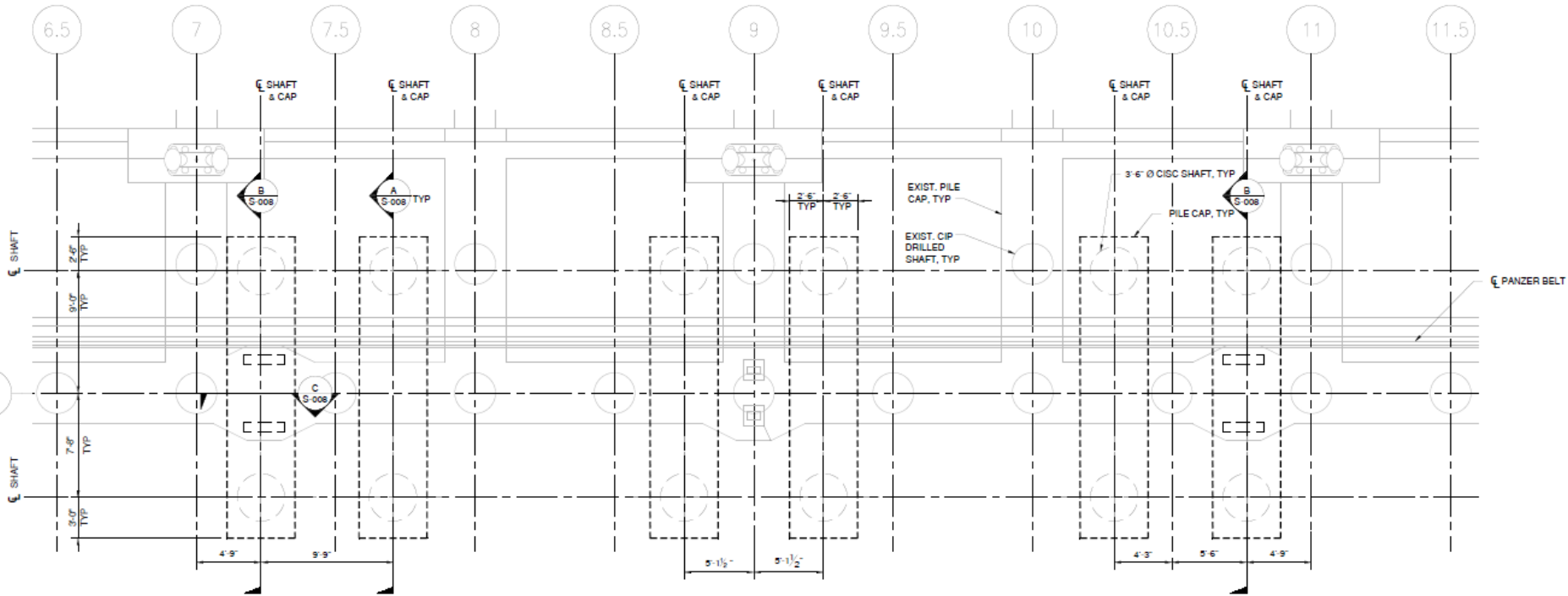


2 SECTION 2 RETROFIT PLAN



PORT HOUSTON
THE INTERNATIONAL PORT OF TEXAS

Proposed Wharf Strengthening - Plan

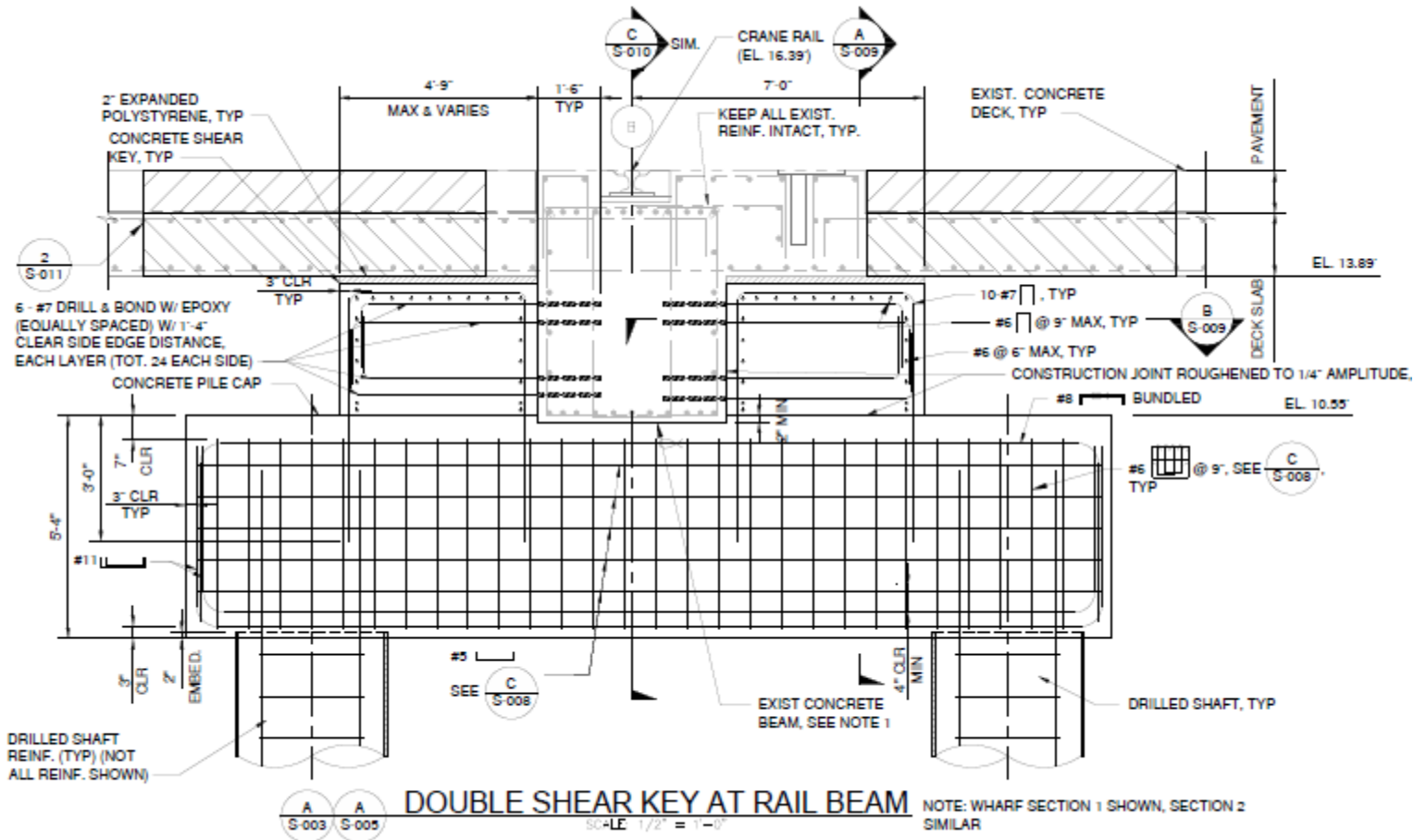


DRILLED SHAFT &
PILE CAP PLAN (SECTION 1)

1
S-001



Design of New Tie-down

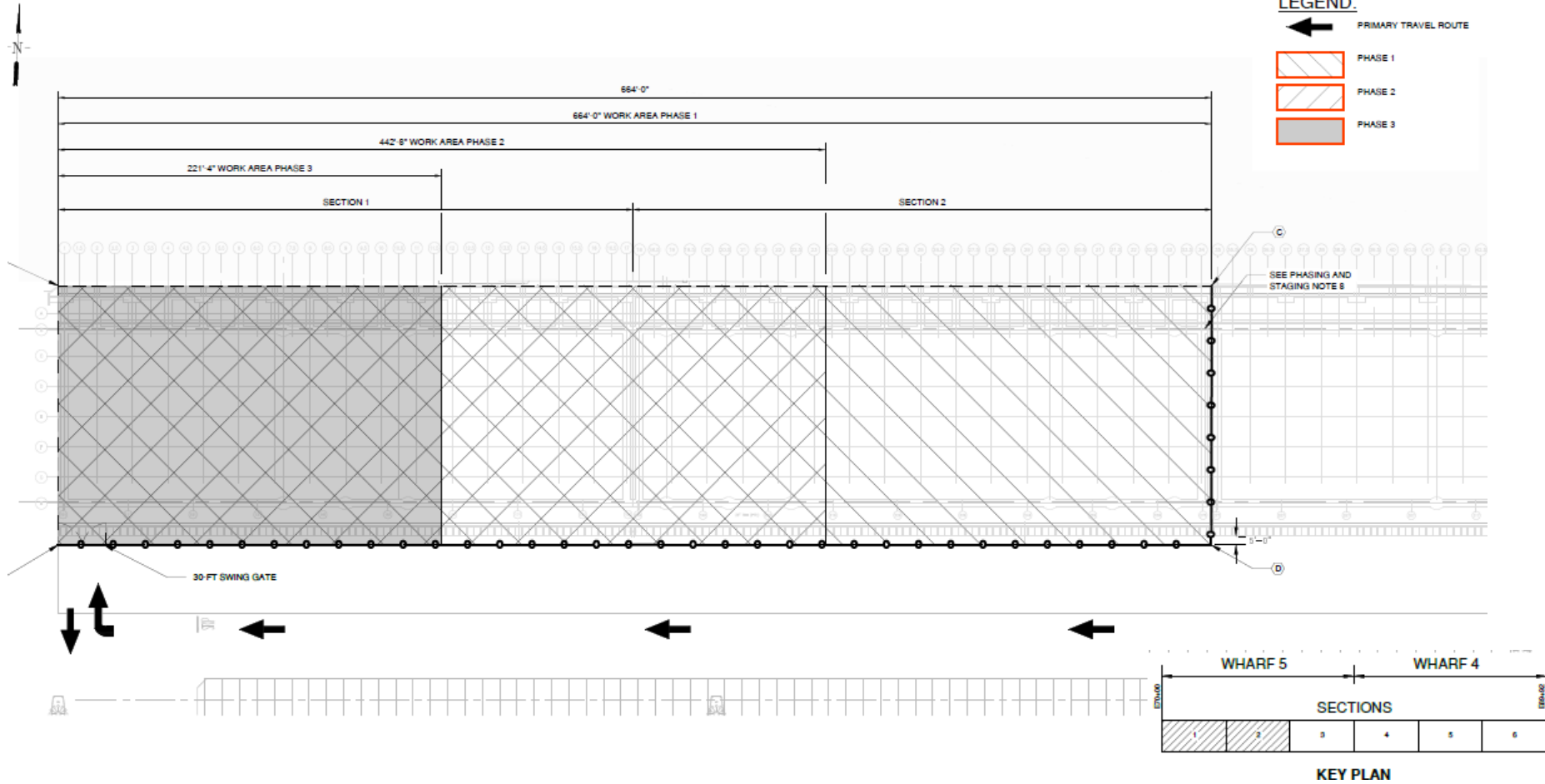


Wharf Section 1



PORT HOUSTON
THE INTERNATIONAL PORT OF TEXAS

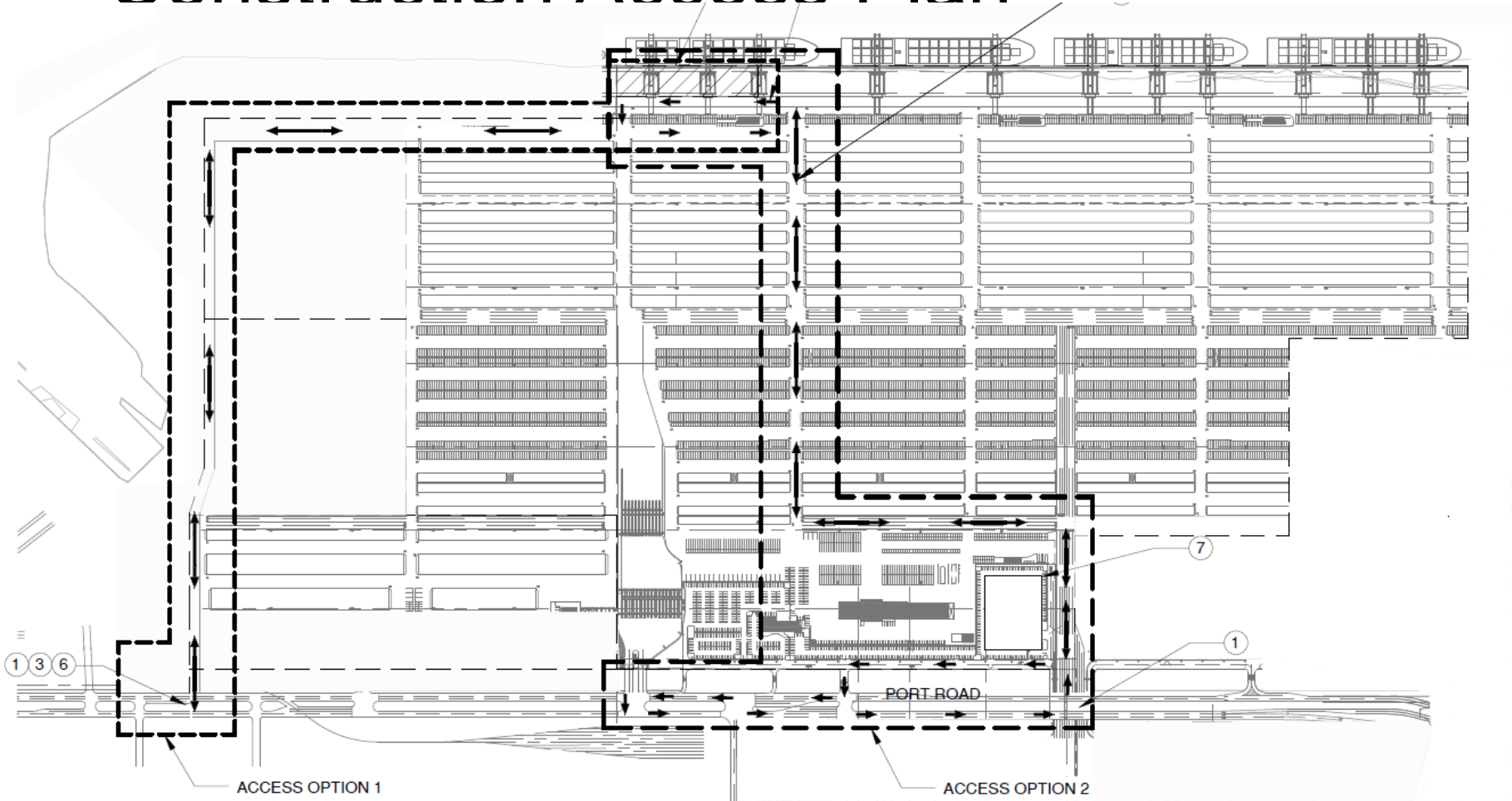
Construction Phasing Plan



AECOM



Construction Access Plan





PORT HOUSTON
THE INTERNATIONAL PORT OF TEXAS™

THANK YOU

Eddy Kharrazi, P.E.

Project Manager
Port Houston

Questions?

www.PortHouston.com

111 East Loop North
Houston, TX 77029